

# American Heart Association Annual Report 2011-2012

SCIENCE & RESEARCH



TREATMENT & EDUCATION



EMERGENCY & HOSPITAL CARE



HEALTHY LIVING





"I never dreamed I would have a heart attack being in the shape I was in. The American Heart Association has played a huge role in my life."

*Dan Martin, a reserve sergeant for the Pineville, N.C., Police Department whose heart stopped beating six times. He's made a full recovery.*

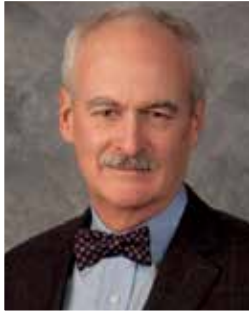
"I'm committed to working with not only women, but also the minority community, to realize we're at higher risk. It makes me feel good that I'm making a difference."

*Reymita "Reina" Walls, an active, healthy mother and grandmother in Omaha, Neb., who overcame having clots form twice in the main artery of her heart. She now volunteers with our Go Red For Women movement to help other women understand their risks for heart disease.*





## 2011-2012 Annual Report



**William H. Roach, Jr., Esq.**  
*Chairman of the Board*



**Gordon F. Tomaselli, M.D., FAHA**  
*President*



**Nancy A. Brown**  
*Chief Executive Officer*

### From the Chairman of the Board and President

The American Heart Association has made great strides over the past year toward our mission of building healthier lives, free of cardiovascular diseases and stroke, and toward our 2020 goal of both a 20 percent improvement in cardiovascular health for **all** Americans and a 20 percent reduction in cardiovascular and stroke deaths.

The latest data shows a promising decrease in deaths since we first set the 2020 goal, but much work remains.

This year we continued supporting researchers seeking lifesaving solutions, such as the scientists developing a blood test that could determine a person's risk of a cardiovascular event. They recently became the first beneficiaries of our Science & Technology Accelerator Program, which is designed to speed the delivery of groundbreaking innovations from the laboratory to the clinic. Our Research Summit in May explored more ways our organization can remain the leader in cardiovascular and stroke science.

Innovation and education were everywhere during this fiscal year, from the launch of the Hands-Only™ CPR campaign to physical fitness promotions. We've also expanded the use of the Heart-Check mark. Look for it on more grocery store items and even on restaurant meals. Hospitals, too, can now receive the Heart-Check mark as an American Heart Association

designation of quality. We continued to help create quality systems of care through programs like Mission: Lifeline®, which ensures the best treatment is available to patients in the critical first minutes of a heart attack. The program now covers more than 61 percent of the U.S. population, including people in high-need rural areas in North Dakota, South Dakota and Wyoming.

Everything the American Heart Association and American Stroke Association have done this year was made possible by volunteers. This year we created our Gold Standard Boards recognition program to honor the work of outstanding volunteers, part of our growing Vision for Volunteerism initiative.

We are proud of everything accomplished on our watch, and we look forward to continued success from the new volunteer leaders.

**William H. Roach, Jr., Esq.**  
*Chairman of the Board*

**Gordon F. Tomaselli, M.D., FAHA**  
*President*

### From the CEO

They'll arrive at the break of dawn in the downtown of your city to set up a Heart Walk fundraising event, hours before our crowds of enthusiastic walkers arrive.

They'll gather around a table to assess – and debate – countless pages in the medical literature before crafting scientific statements that are truly on the cutting edge of research.

They'll stand before audiences and recount their own personal fights to survive cardiovascular diseases or stroke, to bring hope to others who've been diagnosed with these conditions.

And as "You're the Cure" advocates, they'll reach out by the thousands to local, state and federal lawmakers, providing a powerful voice while helping to advance public health policies to build healthier environments.

These are the volunteers of the American Heart Association. The roles they play on our behalf are myriad. Their impact on our work is immeasurable.

Volunteers have been our lifeblood since we were founded in 1924, and I am proud that in 2011-12 they stepped forward once again to share their talents, insights and energy, and give shape to our mission.

Through our Vision for Volunteerism initiative, launched two years ago, we have been reaching out to people in communities across the nation, inviting them to become a part of the American Heart Association. The enthusiasm of their response has been humbling.

No matter how hard we try, we can't thank our volunteers enough. Although, for them, it's never been a question of wanting recognition or gestures of appreciation. For our volunteers, the only question is: How can we help?

Just as they have guided us in past decades, volunteers are the ones we will depend on to carry us along the road to our 2020 Impact Goal. We couldn't be in better hands.

**Nancy A. Brown**  
*Chief Executive Officer*

## OFFICERS

**William H. Roach, Jr. Esq.**  
*Chairman of the Board*  
Chicago, Ill.

**Gordon F. Tomaselli, M.D., FAHA**  
*President*  
Baltimore, Md.

**Ron W. Haddock**  
*Chairman-elect*  
Dallas, Texas

**Donna K. Arnett, Ph.D., M.S.P.H., B.S.N., FAHA**  
*President-elect*  
Birmingham, Ala.

**Debra W. Lockwood, CPA**  
*Immediate Past Chairman*  
Baton Rouge, La.

**Ralph L. Sacco, M.D., M.S., FAHA**  
*Immediate Past President*  
Miami, Fla.

**Bernard P. Dennis**  
*Secretary-Treasurer*  
Sudbury, Mass.

## DIRECTORS

**Joyce Beatty, M.S.**  
Blacklick, Ohio

**David A. Bush**  
Hattiesburg, Miss.

**Mark A. Creager, M.D., FAHA**  
Boston, Mass.

**Shawn A. Dennis**  
Middleton, Wis.

**Barry A. Franklin, Ph.D., FAHA**  
Royal Oak, Mich.

**Max Gomez, Ph.D.**  
New York, N.Y.

**Mariell Jessup, M.D., FAHA**  
Philadelphia, Pa.

**John J. Mullenholz**  
Falls Church, Va.

**Janet Murguía**  
Washington, D.C.

**James J. Postl**  
Houston, Texas

**Alvin L. Royse, J.D., CPA**  
Hillsborough, Calif.

**David A. Spina**  
Wayland, Mass.

**Bernard J. Tyson**  
Oakland, Calif.

**Henry "Hank" J. Wasiak, MBA**  
New York, N.Y.

## ASSOCIATION SENIOR STAFF

**Nancy A. Brown**  
*Chief Executive Officer*

**Meighan Girus, MBA**  
*Chief Mission Officer*

**Sunder D. Joshi, FCA**  
*Chief Administrative Officer &  
Chief Financial Officer*

**Rose Marie Robertson, M.D., FAHA**  
*Chief Science Officer*

**Suzie Upton**  
*Chief Development Officer*

## Affiliate Executive Vice Presidents

**Jeremy Beauchamp**  
Mid-Atlantic Affiliate

**Roman Bowser**  
Western States Affiliate

**Midge LaPorte Epstein, M.Ed.**  
SouthWest Affiliate

**Kevin Harker**  
Midwest Affiliate

**David Markiewicz**  
Greater Southeast Affiliate

**Nicole Aiello Sapio, Ed.D., MBA**  
Great Rivers Affiliate

**Michael Weamer**  
Founders Affiliate

## National Center Senior Staff

**Bill Achenbach**  
Human Resources

**Matthew Bannister**  
Communications

**Lynne Darrouzet, Esq.**  
General Counsel

**Tanya Edwards**  
Field Campaigns

**John M. Hayes**  
Charitable Estate Planning

**Lyn Hughes**  
Corporate Relations

**Paul Kalil**  
Individual Giving

**Robyn Lee Landry**  
Volunteerism

**David Wm. Livingston, Esq.**  
Corporate Secretary &  
General Counsel

**John Meiners**  
Emergency Cardiovascular  
Care Programs

**Kathy Rogers**  
Consumer Health

**Mark A. Schoeberl, MPA**  
Advocacy & Health Quality

**Gayle R. Whitman, Ph.D., FAHA**  
Science Operations

**Michael Wilson**  
Technology & Customer Strategies



# ABOUT THE AMERICAN HEART ASSOCIATION

**Who We Are:** The American Heart Association is the nation's oldest, largest voluntary organization devoted to fighting heart disease and stroke.

Founded by six cardiologists in 1924, our organization now includes more than 22.5 million volunteers and supporters. We fund innovative research, fight for stronger public health policies and provide critical tools and information to save and improve lives.

Our nationwide organization includes 144 local offices and nearly 2,700 employees. We moved our national headquarters from New York to Dallas in 1975 to be more centrally located. The American Stroke Association was created as a division in 1997 to bring together the organization's stroke-related activities.

**Our Mission:** Building healthier lives, free of cardiovascular diseases and stroke. Our mission drives everything we do.

**What We Do:** To improve the lives of all Americans, we provide public health education in a variety of ways.

We're the nation's leader in CPR education training. We help people understand the importance of healthy lifestyle choices. We provide science-based treatment guidelines to healthcare professionals to help ensure the best treatment for every patient, every time. We educate lawmakers, policymakers and the public as

we advocate for changes to protect and improve the health of our communities.

Our volunteer experts select scientific research most worthy of funding – with great results. We have funded more than \$3.4 billion in research since 1949, more than any organization outside the federal government. We have funded 13 Nobel Prize winners and many lifesaving research advancements such as the first artificial heart valve, cholesterol-inhibiting drugs, heart transplantation, and CPR techniques and guidelines.

**Why We're Needed:** Heart disease is the No. 1 killer of Americans. Stroke ranks fourth and is a leading cause of severe disability. Far too many families are losing loved ones of all ages.

Each year, these diseases kill more than 811,000 Americans, which is roughly the same as the entire population of El Paso, Texas; Baton Rouge, La.; or Tacoma, Wash.

Some form of cardiovascular disease affects more than one in every three adult Americans. Many suffer terribly from disabilities caused by these diseases.

The American Heart Association wants everyone to understand the threat – and to know that

cardiovascular diseases and stroke are largely preventable. Risks can be lowered by adhering to what we call Life's Simple 7: not smoking, being physically active, maintaining a healthy body weight, eating a healthy diet, controlling blood pressure, controlling cholesterol and controlling blood sugar.

**Our 2020 Goal:** We are working toward improving the cardiovascular health of **all** Americans by 20 percent, and reducing deaths from cardiovascular diseases and stroke by 20 percent, all by the year 2020.

Our programs, educational resources and advocacy initiatives are all targeted at helping people identify and adopt healthier lifestyles.

To assess your cardiovascular health, all you need to do is visit **MyLifeCheck.org** and answer a few questions. You will learn about modest changes that could make major differences.

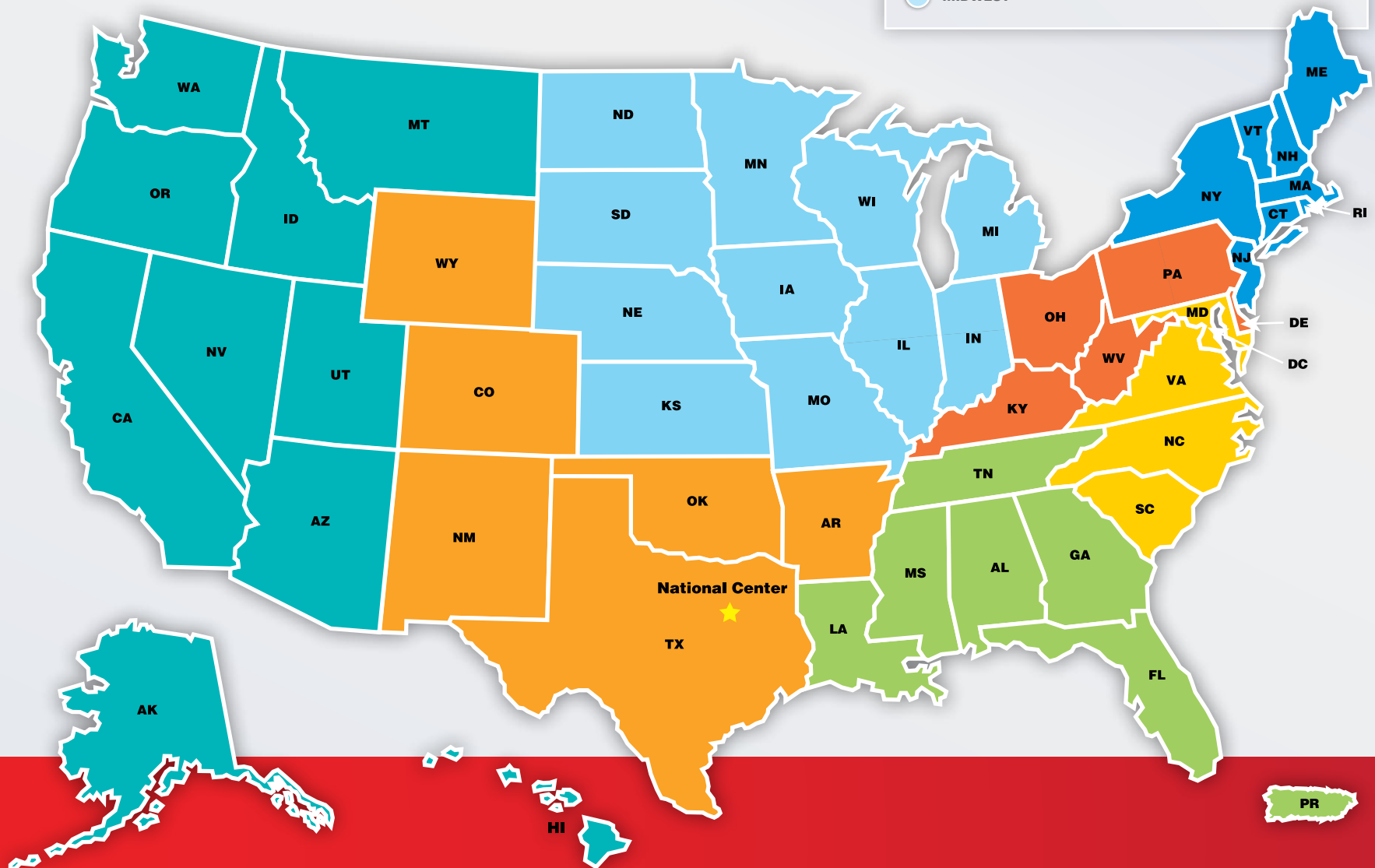
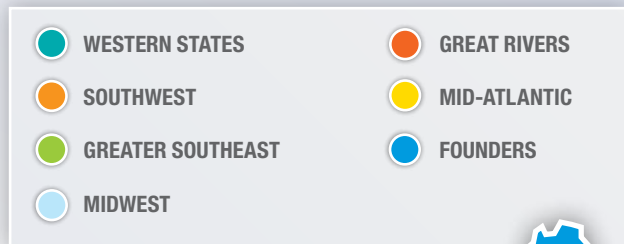
For more information, visit **heart.org** or call 1-800-AHA-USA1.



In 2012, Duke University researcher Robert Lefkowitz, M.D., became the 13th researcher funded by the American Heart Association to win the Nobel Prize. He was the co-winner of the Nobel Prize in Chemistry for studies of protein receptors that let body cells sense and respond to external signals such as danger or the flavor of food.

## SERVING ALL AMERICANS

Our offices are spread all over America so we can work with volunteers to help people fight and prevent heart disease and stroke no matter where they live. Local offices are organized into geography-based affiliates to maximize our coverage of the entire country. Here is the breakdown of our seven affiliates:



## HOW WE IMPROVE AND SAVE LIVES

### *Our Strategic Plan*

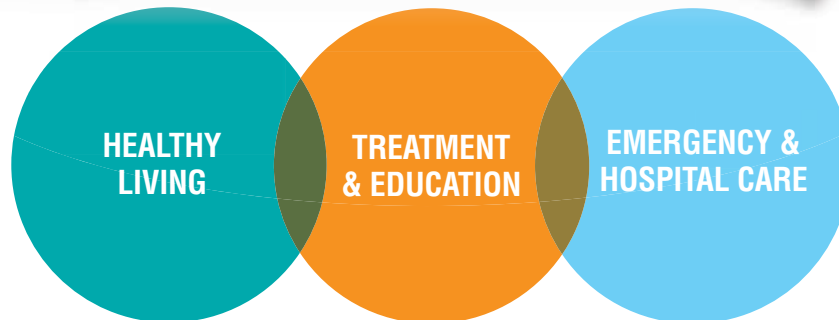
Imagine Americans exercising more, eating healthier and not smoking. Imagine your doctor equipped with better ways to care for your health, and hospitals better prepared to save lives. The American Heart Association and American Stroke Association work toward those goals every day.

We do this as part of a carefully developed Strategic Plan that is focused on an ambitious health goal we've set for the entire nation. We call it our 2020 Impact Goal: to improve the cardiovascular health of **all** Americans by 20 percent while reducing deaths from cardiovascular diseases and stroke by 20 percent. Meeting this goal will require changes in personal choices, public policies and

healthcare systems. Along with our volunteers, we work with individuals, schools, lawmakers, healthcare providers and others to ensure everyone has access to healthier lifestyle choices and proper health care.

Our 2020 goal exists to save lives. We also use this target to measure the success of our work. Accountability is critical to the American Heart Association, and it's a key reason we have been one of the world's most respected health organizations for nearly 90 years. All of the work we do to fulfill our Strategic Plan and meet the 2020 goal can be broken down into three general areas shown below. And, of course, everything we do is guided by science and research.

*Guided By Science & Research*



#### ● SCIENCE & RESEARCH

*Everything we do is guided by science. That means support for groundbreaking research into cardiovascular diseases and stroke. That also means all of our healthy living programs, awareness campaigns, advocacy efforts, education and training, and hospital quality improvement programs are based on the latest evidence-based findings.*

#### ● HEALTHY LIVING

*Stretching beyond disease prevention, this emphasizes a better, healthier lifestyle. It means eating foods that taste great and happen to be healthy. It means walking, jogging or other exercise to feel better and enjoy a more active lifestyle with family and friends.*

#### ● TREATMENT & EDUCATION

*If you or a loved one needs information about cardiovascular diseases or stroke, we are here for you. That means no matter your gender, ethnicity or age, we have something tailored to you. Our expertise and leadership helps guide state and federal lawmakers, as well as international policymakers at the United Nations.*

#### ● EMERGENCY & HOSPITAL CARE

*We work to give all Americans the best care possible whenever and wherever it's needed. For example, CPR training can turn anyone into a lifesaver. We also work with hospitals of all sizes to evaluate and improve the quality and effectiveness of their care.*



## STRATEGIC PROGRESS AND THE 2020 IMPACT GOAL

The first few steps toward our 2020 Impact Goal show some promising results.

The most encouraging news is the mortality rate. Deaths from heart disease and stroke have steadily declined over the past three years for which statistics are available, plunging 6.1 percent. (The most up-to-date statistics are from 2009 because it takes the government years to measure this detailed health information.) These results put us about a third of the way toward our goal of a 20 percent drop by 2020.

In raw numbers, there were more than 32,000 fewer age-adjusted deaths from cardiovascular diseases and stroke in 2009 than there were in 2007. Yet these are not merely raw numbers. These are people: parents, children and spouses; siblings, friends and neighbors; co-workers, clients and

teammates. Viewed that way, the real impact of this decrease is exponentially more profound. It's not just the 90 or so lives saved every day, but also the hundreds and thousands of loved ones, friends and colleagues who are touched by those lives.

As for the other component of our 2020 Impact Goal – improving the cardiovascular health of *all* Americans by 20 percent – the early results are mixed. Nonsmoking and blood sugar levels are improving, and we're also seeing improvements among children in body weight (measured by BMI-for-age) and blood pressure levels. However, physical activity and cholesterol levels are worsening for both adults and kids, and BMI and blood pressure are both worsening for adults.

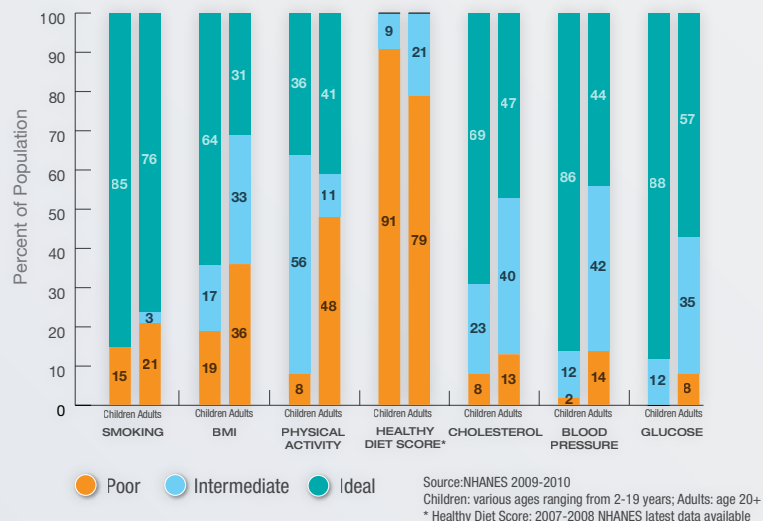
It's important to note that these results are very preliminary, measuring only one statistical “data

point” within a short time period. To put our progress in a larger perspective, over the past decade we have seen improvements in rates of nonsmoking, high blood pressure and cholesterol, but those gains have been offset by spikes in obesity and high glucose levels.

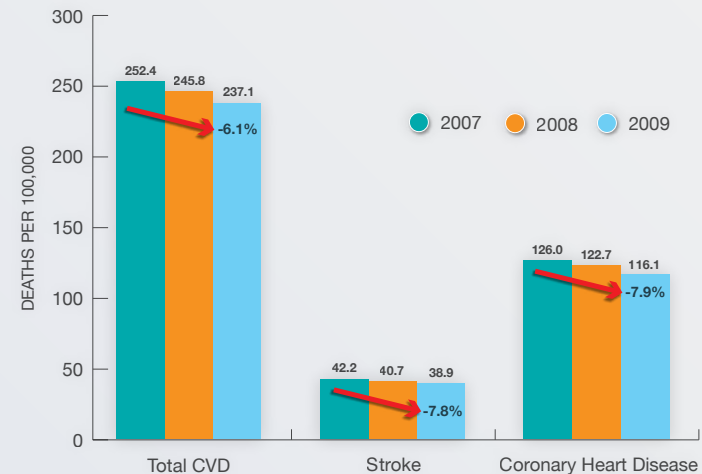
There is one other important thing to note about these statistics: They are based on the three years before we launched many initiatives aimed at improving these areas. We believe more progress has been made since then and we look forward to verifying that once the government collects the data from 2010 – when we announced our goal – and in the years leading up to 2020.

The bottom line is that while much work remains, lives are being saved and improved.

### HEALTH FACTORS & BEHAVIORS



### REDUCING DEATHS



Source: Centers for Disease Control and Prevention, National Center for Health Statistics, Compressed Mortality File 1999-2009, Total CVD, International Classification of Diseases, 10th Revision I00-I99, Q20-Q28; stroke, I60-I69; CHD, I20-I25.

## KEY ACCOMPLISHMENTS IN 2011-12

### *Science & Research*

*Saving and improving lives is at the core of what we do, and science is at the core of how we do it. We lead the way in cardiovascular thought through our scientific meetings, journals and professional membership. And, remaining true to our founders' vision to grow and improve the field, we fund hundreds of scientific research projects each year.*

#### **Conferences and Meetings**

Scientific Sessions continues to be the largest cardiovascular meeting in the United States, and a significant destination for researchers, healthcare providers and educators worldwide. Our International Stroke Conference remains the most impactful and well-attended meeting for cerebrovascular science.

Attendance at our scientific conferences approached 27,000. These gatherings are enlivened by our professional membership, which reached a record high of more than 30,000 people from 109 countries.



#### **Scientific Journals and Publications**

News from our meetings and journals reaches millions of people around the world. Our portfolio of journals again earned top rankings in several measures of importance and influence from Journal Citation Reports®, a top arbiter of peer-reviewed publications. In February, we added a 12th journal, *Journal of the American Heart Association (JAHA)*. This “Open Access” journal is available online, allowing us to deliver information more rapidly.

We also started delivering science news to more than 70,000 professionals each morning with an electronic newsletter, *Cardiovascular Daily*, in collaboration with MedPage Today. Yet another new publication is *Noticias Cientificas*. Each quarter, the latest science news from our conferences and journals is delivered in Spanish, making it more accessible to the nation's fastest-growing demographic and a broad international audience.

#### **Scientific Innovation**

Our dedication to scientific research and innovation was perhaps best evidenced by the 5,661 applications for research support we received this year, and the 972 new projects we funded. Another illustration was the initial investment from our Science & Technology Accelerator Program. Established with a generous gift from Franck and Katina Gougeon, the

Accelerator fills the crucial gap in research funding caused by increased hesitance of investors to support early-stage innovations. The first investment was made in CytoVas, LLC, a new diagnostics company in Philadelphia that is developing a blood test designed to assess the health of blood vessels in people who don't have typical symptoms or signs of heart disease.

We also took a close look at our entire research program to ensure we continue to fund scientific work in the most impactful way. In May, we held a two-day Research Summit, bringing together about 100 volunteer and staff leaders for a rigorous assessment of our research awards, scientific review standards and more. The Board of Directors is expected to consider recommendations from the Research Summit in early 2013.

#### **ASA-Bugher Centers for Stroke Prevention Research**

The most generous research donor in our organization's history, the Henrietta B. and Frederick H. Bugher Foundation, saw the conclusion of its third major research initiative with the American Heart Association/ American Stroke Association and announced plans to fund a fourth. In the most recent program, scientists at Harvard University, Duke University and the University of California-Davis spent four years collaborating on stroke prevention research. The new \$9.24 million grant will focus on an expanded stroke research agenda. The Bugher Foundation has donated more than \$36 million since 1984.

*“I've never found anything but completely professional, personable and brilliant people. We trust the American Heart Association tremendously.”*

*Dan Adams, Trustee of the Henrietta B. and Frederick H. Bugher Foundation.  
(The Bugher Foundation Trustees, from left: Bryan Adams, Bruce Adams, Gayllis Ward and Dan Adams)*

## KEY ACCOMPLISHMENTS IN 2011-12

### *Healthy Living*

*For years, we encouraged Americans to lower their risk of heart disease and stroke. Now we're taking the next step and also asking everyone to embrace a healthier lifestyle – simply to feel better and enjoy life more. With that in mind, we worked with our volunteers to design and enhance programs through our My Heart. My Life.™ healthy-living initiative. And we took several other steps to help all Americans make healthier choices.*

#### **Healthier Foods, More Exercise**

About 126,000 Americans learned the importance of healthy diets through our Teaching Gardens. Children at 105 elementary schools across 27 states planted, nurtured and harvested vegetables – and, of course, tasted what they grew. Research shows that kids in gardening programs, and their families, are more likely to make lifelong changes in their eating habits. We're also making cooking easier for families. Our Simple Cooking with Heart program, funded by Walmart, is helping more people prepare simple, healthy and affordable meals.

More people now have more opportunities for walking, one of the easiest and best ways to get active. New Walking Clubs are being launched all over the country. Our online database of Walking Paths includes enough mileage to cover 28 round trips between New York and Los Angeles. Employers all over the country are

making healthy living a priority, and our program recognizing them continues to grow. Perhaps you are among the 6.3 million Americans working at one of the more than 2,400 Fit-Friendly Worksites this year.

#### **Heart-Check Mark**

Eating healthy often starts with grocery shopping. This year the Heart-Check Mark Food Certification program was expanded, making it easier to find heart-healthy foods. Research shows that among all nutritional icons, ours is the most recognized and trusted. Nearly 950 products carry the Heart-Check mark, including – for the first time – fish, nuts and other foods higher in “better” fats. We now also certify heart-healthy meals in restaurants. The first restaurant meals to earn the Heart-Check mark were at Subway, the world's largest restaurant chain.

#### **Fighting Childhood Obesity**

We have helped millions of people get active and eat healthier – more than 7.5 million alone through our work with the Alliance for a Healthier Generation. The Alliance, founded by the American Heart Association and the William J. Clinton Foundation in 2005 to reduce childhood obesity, makes physical activity and healthier foods available to children before, during and after school. Eighty percent of schools involved have made strides toward creating healthier environments for students and staff.

The school nutrition rules we've been advocating in states became federal law. We also continued improving public health by advocating in legislatures across the country. This year, we helped almost 17 million people in four states get more access to school facilities for physical activity after hours. We also successfully advocated for about 2.6 million schoolchildren in two states to have reduced exposure to unhealthy artificial trans fats. And more than 1.8 million students have gotten moving through the NFL PLAY 60 Challenge, our partnership with the NFL, since its inception in 2006.

#### **Stopping Tobacco**

Over the years, we've helped pass laws across the country to stop public smoking and help smokers stop. This year, smokers got more tools to quit, thanks to our federal legislative efforts, the Affordable Care Act and changes in Medicaid benefits in three states. Millions more Americans in four states are benefitting from toughened state and local laws, such as higher cigarette taxes and smoke-free ordinances. These policies have been shown to dramatically reduce tobacco use among kids and encourage them to never start.



**“Kids are having fun while learning that veggies can be tasty and will help their bodies – and they're teaching their families, too. It's interactive, educational and really gets families talking about healthy changes.”**

*Kelly Meyer, philanthropist and co-founder of the American Heart Association Teaching Gardens.  
(Pictured here with students from P.S. 276 in Brooklyn, N.Y.)*

## KEY ACCOMPLISHMENTS IN 2011-12

### *Treatment & Education*

*Millions of Americans deal with heart disease or stroke every day, and every day we are here to help. As the leading volunteer-based organization battling those diseases, we consider it our responsibility to provide the information, programs and resources to empower survivors.*

#### **The Reliable Source**

Our patient education websites average 20 million visits annually. We distributed more than 2.1 million printed health education materials to patients and consumers last year. Our materials earned 11 National Health Information awards recognizing the quality of consumer health information. Through print and online magazines, we reached more than 500,000 people with *Heart Insight* and more than 100,000 through *Stroke Connection*.

#### **Serving All Americans**

We are committed to eliminating disparities in health care. To ensure our message is heard by all Americans, this year we continued to reach people who face particularly

high risk for heart disease and stroke: African-Americans, Hispanics/Latinos, people who live in underserved areas and those who still may not realize they are at risk: women.

Because we are devoted to changing the fact that heart disease is the No. 1 killer of women, we started the Go Red For Women movement in 2004. More than 1.4 million women have joined, and research shows nearly nine in 10 have made a healthy behavior change. All of our Go Red efforts are made possible by national sponsors Macy's and Merck & Co., Inc., and by our thousands of volunteers across the country. We continued raising awareness this year with the help of famous supporters during American Heart Month in February. U.S. Surgeon General Regina Benjamin, television personalities Dr. Mehmet Oz and Star Jones, and actresses Elizabeth Banks and Marlo Thomas were among those Going Red.

Sixteen women each received \$2,500 toward their college education through the first awards from our Go Red Multicultural Scholarship Fund. The aim is for them to become healthcare professionals who help their communities. We also delivered heart-health information in Spanish through Go Red Por Tu Corazón.

African-Americans are twice as likely as white people to have a first-ever stroke, and our Power To End Stroke campaign helped hundreds of thousands make lifesaving changes this year. More than half our 750,000 Power participants have had

their blood pressure checked and seen a healthcare provider. Our Most Powerful Voices Gospel Competition registered 15,000 musicians and fans who will receive stroke information monthly. The 15,000-plus churches in the National Baptist Congress are spreading our messages, as are the 400,000-member Alpha Kappa Alpha Sorority and celebrities such as Bishop T.D. Jakes, author Stedman Graham, Michelle Williams of *Destiny's Child* fame and members of the Martin Luther King Jr. family.

#### **Affordable Care Act**

The Supreme Court's upholding of the Affordable Care Act was a victory for our 2020 goal and for patients, especially the 7.3 million uninsured Americans with heart disease or stroke. New, free preventive services were added for most Americans with private insurance and for Medicare beneficiaries. Medicare beneficiaries also can now receive a free annual wellness visit.

#### **Global Challenge**

In addition to improving the health of Americans, we are proud to be a leader in the global fight against cardiovascular diseases and stroke. CEO Nancy Brown represented non-government organizations dedicated to these diseases on the U.S. delegation at a United Nations summit on non-communicable diseases. This was only the second time the U.N. held a high-level summit focusing on a health issue, and world governments adopted a target of reducing mortality by 25 percent by 2025.



**"There is life after stroke. It can be a rich and fulfilling life. It's not the end, only the beginning."**

*José Maldonado of Columbia, Md., who was paralyzed on his right side, couldn't read or write and struggled to speak after a massive stroke. Now, thanks to his wife and friends who never gave up on him, José has his life back.*



## KEY ACCOMPLISHMENTS IN 2011-12

### *Emergency & Hospital Care*

*We hope our Healthy Living and our Treatment and Education programs keep you and your loved ones from ever being in an ambulance or hospital. But because tragedy does strike, we are constantly working to ensure everyone has access to the best and fastest care possible.*

#### **CPR and First Aid**

More than 14 million people in over 60 countries learned CPR from us last year. Training sites across Asia nearly doubled, spreading across Hong Kong, Taiwan, Macau and China through our alliance with Laerdal Medical Corp. Domestically, three states passed laws requiring CPR training in schools, with North Carolina making it a high school graduation requirement. A fourth state strengthened its school CPR law. We launched our Hands-Only CPR awareness campaign and mobile CPR tour to explain that anyone can be a lifesaver by following a few basic steps: If you see an adult collapse, call 9-1-1, then push hard and fast in the center of the chest. This campaign is funded by a \$4.5 million, three-year grant from the WellPoint Foundation.

#### **Improving Treatment Systems**

More than 190 million Americans – about 60 percent of the U.S. population – are now covered by our program that ensures the best treatment for the kind of heart attack caused by a totally blocked coronary

artery. Our Mission: Lifeline program builds community systems of care so the best treatment practices are in place from the first 9-1-1 call to hospital discharge. These systems are crucial because survival rates for out-of-hospital cardiac arrest remain below 12 percent.

This year we expanded Mission: Lifeline to include more types of emergencies requiring cardiac resuscitation. These systems of care are especially critical in sparsely populated areas. This year, the Leona M. and Harry B. Helmsley Charitable Trust donated \$5.97 million to implement Mission: Lifeline throughout Wyoming; the two previous years, the Helmsley Trust gave \$8.4 million to the program in South Dakota and \$4.4 million in North Dakota.

Our quality-improvement programs help hospitals nationwide follow the latest scientific treatment guidelines — with life-changing results. More than 200 peer-reviewed manuscripts published in leading scientific journals found that these programs led to lasting and important healthcare changes. More than 2,000 hospitals have implemented one or more Get With The Guidelines® programs for heart attacks, heart failure, resuscitation and stroke. Get With The Guidelines ensures that everyone gets the same quality of care, and is the only program of its kind proven to eliminate healthcare disparities based on ethnicity, race or gender.

#### **Better Care – It's the Law**

Over the past year, we have directly helped influence policy in all 50 states, the District of Columbia and Puerto Rico. Our emphasis on heart-defect screenings for newborns led to laws in five states. Measures we helped pass across the country cover smoke-free air, tobacco cessation coverage, improving nutrition, CPR training, stroke care and other heart-health matters.

#### **Accredited & Certified Hospitals**

The Heart-Check mark you trust to help you pick the right foods now can help you find quality health care. In the first year, 47 states had at least one hospital meet standards of certification or accreditation. Nearly 1,000 hospitals were certified or accredited, including Primary Stroke Centers as part of our co-branded accreditation program with The Joint Commission; Advanced Certified Heart Failure hospitals; and Mission: Lifeline Accreditation as part of our program with the Society of Chest Pain Centers.



**"I volunteer with the American Heart Association to teach my community ways to reduce the risk of heart disease. I'm also asking Congress not to cut scientific research funding, because without research and innovative discoveries, I may not have survived."**

*Pamela Hirata of Mililani, Hawaii, who leads a healthy lifestyle after recovering from three sudden cardiac arrests.*



## FINANCIAL STEWARDSHIP

*Before we spend a single dollar, we always ask a simple question: How will this expense change or save a life?*

We hold ourselves accountable, both to our donors and to the Americans whose lives we are constantly striving to improve. This accountability permeates everything we do, especially spending. This has always been part of our approach, and is even more of an emphasis during these uncertain fiscal times.

Now take a closer look at how we spent a typical dollar this past year. The pie chart on page 13 shows that 74 cents went to research, public health and education, and professional education and training. Add another 5 cents per dollar for community services, and you get a total of \$487 million that we invested last year into the essence of our mission.

We did this by running an efficient organization. We also continued to exceed the Better Business Bureau Wise Giving Alliance standards.



Here are some more notable details from this year's financial statement:

### Research

Research is at the core of everything we do, and our devotion to science was best expressed by a \$6 million increase in funding to research awards. This continues our status as being second only to the federal government in the funding of cardiovascular and stroke research in the United States.

### Revenue Growth

Special events – our largest revenue stream – grew by \$16 million, an increase of 6.8 percent over the previous year. Restricted contributions spiked as well and we saw an increase in national corporate sponsorships.

Some of these gains were offset by declines in donations via direct mail and by a reduction in in-kind contributions primarily related to advertising for public service announcements. All told, public support revenue grew by \$19 million, or 3.7 percent.

### Other Revenue

As we are all aware, the current turbulent economy makes it difficult to enjoy sustained growth in investments. So a year after reporting long-term portfolio

gains of \$58 million, those same investments were down \$9 million in the current fiscal year. Additionally, year-end valuations of split interest agreements and AHA's beneficial interests in perpetual trusts resulted in losses of \$4 million compared to prior year gains of \$15 million.

This combined variance of \$86 million accounted for nearly our entire decrease in other revenue. These results are indicative of market volatility and not any specific investment decisions. Their impact to our daily operations is minimal, and we remain committed to a solid, long-term investment strategy that ensures our ability to withstand short-term fluctuations.

"Coming out of the financial downturn four years ago, our focus has been on building back our core revenue sources, controlling administrative expenses and managing our cash and investment resources," said Sunder D. Joshi, FCA, Chief Administrative Officer and Chief Financial Officer.

"Contributions, special events and bequests performed well with a combined growth of 6.3 percent," he said. "These core revenue sources comprised nearly 88 percent of total public support. Total expenses were almost unchanged and we generated \$24 million cash from operations. We were able to add \$26 million to unrestricted net assets and \$21 million to total net assets."

The American Heart Association funds more cardiovascular and stroke research than any U.S. organization except the federal government.

# FINANCIAL REPORT

The figures on this page depict the financial activities of the National Center, affiliates and all components of the American Heart Association and its division, the American Stroke Association, for the fiscal year ended June 30, 2012.

## PUBLIC SUPPORT AND OTHER REVENUE

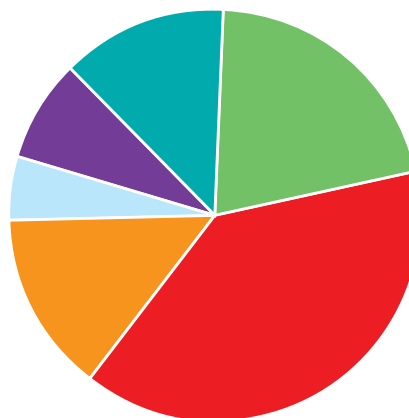
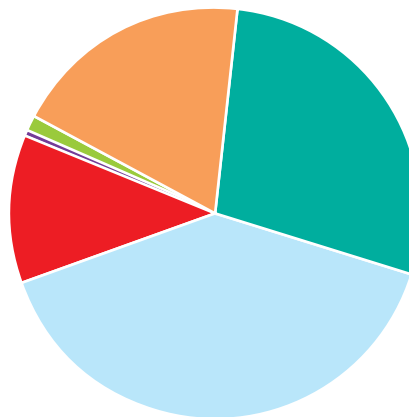
(in thousands)

|                           |                  |               |
|---------------------------|------------------|---------------|
| Contributions             | \$178,930        | 28.0%         |
| Net Special Events        | 255,346          | 39.9%         |
| Bequests                  | 74,319           | 11.6%         |
| Split-interest Agreements | 1,715            | 0.3%          |
| Fundraising Agencies      | 7,528            | 1.2%          |
| Other Revenue             | 121,687          | 19.0%         |
| <b>Total Revenue</b>      | <b>\$639,525</b> | <b>100.0%</b> |

## EXPENSES

(in thousands)

|                                   |                  |               |
|-----------------------------------|------------------|---------------|
| Research                          | \$128,525        | 20.8%         |
| Public Health Education           | 241,376          | 39.1%         |
| Professional Education & Training | 86,537           | 14.0%         |
| Community Services                | 31,091           | 5.1%          |
| Management & General              | 48,933           | 7.9%          |
| Fundraising                       | 80,927           | 13.1%         |
| <b>Total Expenses</b>             | <b>\$617,389</b> | <b>100.0%</b> |



## ASSETS

(in thousands)

|   |                    |
|---|--------------------|
| Cash, Cash Equivalents, Investments & Accrued Investment Income | \$570,086          |
| Beneficial Interest in Perpetual Trusts                         | 125,674            |
| Accounts Receivable   | 167,153            |
| Split-interest Agreements                                       | 65,795             |
| Land, Buildings and Equipment, Net                              | 71,766             |
| Other Assets  | 22,243             |
| <b>Total Assets</b>   | <b>\$1,022,717</b> |

## LIABILITIES

(in thousands)

|                                     |                  |
|-------------------------------------|------------------|
| Research Awards Payable             | \$260,794        |
| Accounts Payable & Accrued Expenses | 46,532           |
| Other Liabilities                   | 41,337           |
| <b>Total Liabilities</b>            | <b>\$348,663</b> |

## NET ASSETS

(in thousands)

|   |                    |
|---|--------------------|
| Unrestricted Net Assets                 | \$284,300          |
| Temporarily Restricted Net Assets       | 224,544            |
| Permanently Restricted Net Assets       | 165,210            |
| <b>Total Net Assets</b>                 | <b>\$674,054</b>   |
| <b>Total Liabilities and Net Assets</b> | <b>\$1,022,717</b> |

A complete copy of financial statements audited by KPMG, LLP is available upon request from the American Heart Association, Inc., 7272 Greenville Ave., Dallas, TX 75231 or on our website at heart.org.

## RAISING MONEY TO SAVE LIVES

*With more than 82.5 million Americans living with cardiovascular diseases and the effects of stroke, we realize the impact of our mission. Many people remain at risk, especially among our youth, yet government funding for research is going down. This is why we cherish our donors. Whether gifts are coins from children or large checks from corporations, we know there's a reason for each – a thank-you for a life saved or changed, or to find more ways to save and change lives.*



Dave Jones

At Pleasant Ridge Elementary in the Chicago suburbs, PE teacher Dave Jones is a great example of how our volunteers make a difference. He uses our Jump Rope For Heart fundraiser to teach children about the benefits of exercise and the importance of helping others. “The kids really become part of a bigger community,” he said. “I’m showing them, open up to more than yourself.”

Those kids are among more than 10 million students involved last year in Jump Rope For Heart and our other in-school fundraiser, Hoops For Heart. Nearly 2 million of those students raised money. Many donations were small, but their combined impact was huge: \$54.7 million.

Merging physical activity and community service to produce a fun event also is the formula for our Heart Walks. More than 500,000 people served our lifesaving mission while participating in Heart Walks nationwide, raising a phenomenal \$100 million. We saw 26 markets each raise more than \$1 million, with Dallas setting a record of \$4.2 million.

Heart Walks are among several ways we bring communities together in the fight against heart disease and stroke. We celebrate survivors, volunteers and supporters in communities through Heart Balls and through Go Red For Women Luncheons. Close to 90,000 people attended Heart Balls last year, generating more than \$56 million. Another 84,000 guests enjoyed Go Red Luncheons that raised \$35.6 million.

As for Dave’s school, he and his students raised \$46,440 last year, making Pleasant Ridge one of our top five fundraising schools once again. “It becomes a big thing in the kids’ minds that we are a national power,” he said. “And then they push each other to prove it!”

Of course, it’s not just the kids who get satisfaction from raising money and volunteering for the American Heart Association. “Why do I volunteer? Because they couldn’t pay me what it’s worth if you were to put a price tag on it,” said Dave, whose school has raised nearly \$800,000 since 1988-89.

### Corporate Support and Community Leadership

Our corporate supporters, as well as foundations and individual donors, found a wide variety of ways to get behind our lifesaving mission this year.

More than 10,000 Abbott Labs employees chose to give to us, helping to bring our total donations from workplace giving campaigns to more than \$7.1 million. Jenny Craig joined as a national supporter of our *My Heart. My Life.* healthy living initiative. Through the dedication of its employees and generosity of its customers, Ross Stores raised more than \$3.1 million. And WellPoint Foundation became the inaugural sponsor of our Hands-Only CPR campaign, part of the \$39.8 million generated in Corporate Relations.

Board member David Spina and wife Stevie gave \$1.5 million for the Spina Commitment to Quality Improvement. Their donation supports the Get With the Guidelines program, which ensures quality care for all Americans.

The Henrietta B. and Frederick H. Bugher Foundation continued its innovative support of stroke research by donating \$9.24 million to create the collaborative American Stroke Association-Bugher Centers of Excellence in Stroke. The Bugher Foundation is the most generous research donor in the history of our organization, giving more than \$36 million since 1984.

The Leona M. and Harry B. Helmsley Charitable Trust continued its support of Mission: Lifeline, our program that seeks the best treatment for the kind of heart attack caused by a totally blocked coronary artery, by giving \$5.97 million to help fund the program in Wyoming.

Addressing a need for Mission: Lifeline in rural communities, the Leona M. and Harry B. Helmsley Charitable Trust has given a total of \$18.8 million the last three years to expand the program across South Dakota, North Dakota and Wyoming.

**LIFETIME**

*Recognizes corporations and foundations with lifetime giving of \$1 million and above, and individuals and family foundations with lifetime giving of \$100,000 and above.*

A Private Richmond Foundation  
Abbott Laboratories Employee Giving Campaign  
Abbott Laboratories Inc.  
Abell-Hanger Foundation  
ACH Food Companies Inc.  
Aetna Inc.  
Albemarle Corporation  
Alexander & Baldwin Inc./A&B Foundation  
Allegany Franciscan Ministries Inc.  
The Fred and Jean Allegretti Foundation Inc.  
The John and Mary Alford Foundation  
Amedisys Home Health Services  
Mrs. Joseph C. Anderlik  
Anderson & Anderson LLC  
Norma Anderson  
The Annenberg Foundation  
Anthem BlueCross and BlueShield  
Aramark  
Archer Daniels Midland Company  
Micky and Madeleine Arison Family Foundation  
AstraZeneca Pharmaceuticals LP  
Athletic World Advertising  
Automatic Data Processing Inc. Foundation  
Averitt Express Charities  
The Ayers Foundation  
Ann Pelton Babcock  
Mari Bailey  
Alvin and Geraldine Baileys Family Foundation  
Mr. and Mrs. Earl E. Bakken  
Bank of America  
Ms. Jacqueline Barrett  
Lucille Barron Trust  
Ms. Elizabeth Bartels  
Mr. and Mrs. Arthur Barter  
Charlotte Bartolett  
Ruth Bartsch Memorial Trust  
The Sandra Atlas Bass and Edythe & Sol G. Atlas Fund Inc.  
Charles and Sharon Bates  
Bayer Healthcare Consumer Care  
Guy E. Beatty Jr.  
Ward Beaudry  
Beaumont Hospital, Royal Oak, MI  
Jack W. Beech  
The Bender Foundation Inc.

The Late Stanley S. Bender  
Len and Barbara Berenfield  
H. N. and Frances C. Berger Foundation  
Mr. John Berman, J.D.  
Dave and Mary Bernauer  
The Berner Charitable and Scholarship Foundation  
Joseph Berson  
Mr. and Mrs. Jerry Bisgrove/Stardust Foundation  
Clare F. Black, J.D.  
BlueCross BlueShield of Minnesota  
Mr. Mark J. Bluth  
Boehringer Ingelheim Pharmaceuticals  
Mr. and Mrs. Herman and Emmie Bolden  
Ms. Wilma Booth, LPN  
Anne R. Bord  
Boston Scientific  
Mark A. Boyson  
Mrs. Elizabeth M. Bowden  
Mr. and Mrs. John Bradley  
Mr. Kevin M. Brandt  
Mr. and Mrs. Paul Breen Jr.  
Mr. and Mrs. David and Ann Brennan  
Brennan Family Foundation  
Alex L. Brewer Family Foundation  
Bright House Networks  
The Brinson Foundation  
Bristol-Myers Squibb  
Bristol-Myers Squibb Foundation  
Florence and Arthur Brock Family Foundation  
The Peter Brock Foundation  
Nancy and Gary Brown  
Mr. Edwin Buckingham  
Dr. and Mrs. Vincent Bufalino  
The Henrietta B. and Frederick H. Bugher Foundation  
The Bulkley Foundation Trust  
Ms. Paula Butler  
Mr. John Byler  
The California Endowment  
California Community Foundation  
Mr. Bobby Campbell  
Camp Younts Foundation  
In honor of Jasmine L. and Samuel C. Cantor by Eddy and Helaine Cantor  
Capitol Federal Foundation  
Kenneth and Brenda Carmel  
Amon G. Carter Foundation  
Mrs. Ann Carter  
W. W. Caruth Jr. Foundation/Communities Foundation of Texas  
CBS Radio Las Vegas  
Mr. John Chalsty  
Ms. Pauline Cheplen  
The Chicago Community Trust  
Dr. and Mrs. Culley Christensen  
David L. Christensen, J.D.  
The Christ Hospital

Challenger Foundation  
Mr. and Mrs. J.R. Champion  
Ann and George B. Chapman Jr.  
The Rhoda and David Chase Family Foundation  
Lena Cherrix  
Chesapeake Energy Corporation  
Mr. and Mrs. Tom N. Chewing  
Citigroup Payment Services  
City of Chicago Department of Finance  
Chickasaw Nation  
Mr. and Mrs. Jim Clark  
Mr. L. Craig Clayton, J.D.  
Clear Channel  
The Cleveland Clinic Foundation  
The William T. Coakley Foundation  
Mr. and Mrs. Mark Coe  
Mr. and Mrs. Jerry Colangelo  
Helen Bamberger Colby Charitable Foundation  
Leo W. and Lilyan E. Cole Fund  
Lorraine Cole  
The Irene D. Colliia Trust in the New York Community Trust  
Stephen and Helane Colvin  
Ron G. Compton, J.D.  
T. Gary Connett  
Bert A. Cooper, F.P.  
Rosario Costa  
Clarence L. Coleman Jr.  
and Lillian S. Coleman Foundation  
Michael Covarrubias  
Mr. and Mrs. Larry P. Clemmensens  
Colangelo Family Trust  
Columbus Medical Association Foundation  
Community Health Charities Iowa Inc.  
Community Health Charities of California  
Community Health Charities of Texas  
ConAgra Foods Inc.  
Cordis Corporation  
The Crean Foundation  
Ms. Jill Critchfield  
Ms. Nancy Crow, J.D.  
Mr. Rick Curley  
Richard F. Czaja  
Dade Community Foundation  
Dakota Medical Foundation  
Danford Foundation  
Mari Danihel  
Mr. Willy Darrow  
The Davee Foundation  
The Paul and Carol David Foundation  
Mr. and Mrs. Norwood and Marguerite Davis  
Warren Davis  
DBJ Foundation  
Lawrence J. and Florence A. De George Charitable Trust

The Jon Holden DeHaan Foundation  
The Dick and Betsy DeVos Foundation  
The Richard and Helen DeVos Foundation  
Hermé de Wyman Miro, Founder and President, The International Society of Palm Beach  
Margaret E. Dickins Foundation  
Dignity Health  
Ms. Floda Dinser  
Discount Tire Co.  
Ray and Dagmar Dolby Family Fund  
Helen G., Henry F., & Louise T. Dornette Foundation  
Dodson Family Foundation  
The Dollens Family Foundation  
Mr. Ronald Dollens  
Dr. Scholl Foundation  
The Dream Fund at UCLA  
Mr. W. Dray, J.D.  
Joseph Drown Foundation  
DSF Charitable Foundation  
Mr. Bruce Dunlevie and Mrs. Elizabeth Wood Dunlevie  
Jessie Ball duPont Fund  
Philip B. Dusenberry  
Irene L. Eagelston Foundation  
Robert E. and Elouise R. Eberly  
George S. and Dolores Dore Eccles Foundation  
Mr. and Mrs. Geoffrey Edmunds/Edmunds Family Foundation  
Mr. and Mrs. David L. Edwards  
Eichenberg-Larson Charitable Foundation  
Mr. and Mrs. Samuel L. Eichenfield  
Eli Lilly & Company  
The Saul and Theresa Esman Foundation  
Katti Esp  
Mr. James Evans, J.D.  
Fred Farsjo, J.D.  
Edith Farson  
Federated Department Stores  
Howard F. Feinman  
Helen Fernandez Trust  
Fidelity Investments  
The Hon. and Mrs. Simon C. Fireman  
Ray C. Fish Foundation  
The Ella Fitzgerald Charitable Foundation  
Florida Association for the Study of Headaches  
Mr. and Mrs. Charles and Kathie Flournoy  
Foundation for Cardiovascular Research  
Mr. and Mrs. Allen Frank  
The Samuel J. and Connie M. Frankino Charitable Foundation

Dr. Robert H. Frey  
Ms. Kathy Friday  
The Gerald J. and Dorothy R. Friedman New York Foundation for Medical Research  
J. B. Fuqua Foundation Inc.  
Future Fitness  
Mrs. Gannon  
Brenda Geis  
Genentech  
Gettinger Family Foundation  
Mr. and Mrs. Peter and Ann Gilbert  
GlaxoSmithKline  
Patricia Goldman  
Herman Golub Charitable Trust  
James Gompf  
Mr. and Mrs. Clarence Gooden  
Ms. Meg Goodman  
Bill and Alice Goodwin  
Mrs. Arlette Gordon  
Merle Gordon  
Frank and Katina Gougeon  
Graff - Palm Beach  
Mr. and Mrs. Howard and Linda Graham  
The Green Foundation  
Carl and Alma S. Greilach Fund  
Guidant Corporation/Guidant Foundation  
Glen Guttormsen  
Mr. and Mrs. Erhardt Haas  
Mr. and Mrs. Willard Hackerman  
Mr. Christopher Damon Haig  
Bruce T. Halle Family Foundation  
James Hamers  
George and Mary Josephine Hamman Foundation  
The Hamill Foundation  
Mr. and Mrs. Lee T. Hanley  
Armond Hansen Trust  
John and Kathy Harnish  
The Luther and Susie Harrison Foundation Inc.  
Harvard Pilgrim Health Care  
Haven Charitable Foundation  
H.C.S. Foundation  
Mr. and Mrs. Clyde Head  
Health Foundation of South Florida  
Health Net Foundation  
Heart-A-Rama  
Heilbrunn Foundation  
Harriet and Robert Heilbrunn  
Johnny Helenbolt, J.D.  
Hellman Family Foundation  
The Leona M. and Harry B. Helmsley Charitable Trust  
Mr. Rick Hendrick  
Carl Hennrich  
Bob L. Herd Foundation  
The Paul J. Hewgill Charitable Foundation Inc.  
Sandra O. Hijikata  
Duane Hills  
The Rose Hills Foundation

Addison Hines Charitable Foundation  
Irma T. Hirsch Trust  
Hope Hofmann  
Ms. Rhonda Hollaar  
Mrs. Robert J. Hoover  
Ms. Susan Horner, J.D.  
Christy Houston Foundation  
Houston Endowment Inc.  
Humboldt Area Foundation  
Mr. and Mrs. Ernest C. Hunt  
Col. and Mrs. Charles M. Hunter  
Huntington Memorial Hospital, Pasadena, CA  
Dr. and Mrs. Robert G. and Chari Hust  
IBM Employee Giving Campaign  
IBM Employee Services Center  
Mr. Terry Iles  
Mr. and Mrs. Bob and Mary Irwin  
O. Wayne Isom, M.D.  
Annabella R. Jenkins Foundation  
Jiffy Lube International  
Don Johnson  
Johnson & Johnson Employee Funds  
Barbara Jones  
Margaret Pollard Joyner  
JPMorgan Chase  
JPMorgan Chase Foundation  
JPMorgan Institutional Trust Services  
JT Tai & Co. Foundation Inc.  
Juan Young Fund I of The Oregon Community Foundation  
Barbara Kahn  
Kaiser Permanente  
Kaiser Permanente Foundation  
Paul and Lydia Kalamonovitz Trust  
Dena Kalischer  
Maurice Kanbar  
Daniel and Susan Kane  
Mr. and Mrs. Kaplan  
Mr. Jonathan Kaplan  
Vidya and Dhana Kaushik  
Jeffrey Kenner  
Ilma F. Kern Foundation  
Helen Dyer King Fund  
King Pharmaceuticals  
Mr. Glen Kinney  
F. M. Kirby Foundation Inc.  
Kirkorian Family Foundation  
Faith & James Knight Foundation Inc.  
Gladys Knuppenburg Trust  
Jack E. Knuppenburg Trust  
Valerie Koch  
Kopf Family Foundation  
KPMG  
Mr. Fred Kroeger  
Mrs. Mary Krueger  
Gregory Kruzel, J.D.  
The Kurr Foundation  
Jill R. Kurtz, J.D.  
KyXy 96.5 FM  
Lakeside Women's Hospital

Philip Lamb, J.D.  
The Sartain Lanier Family Foundation Inc.  
Wayne and Gayle Laufer  
Charles Henry Leach II Foundation  
Leegin and Brighton  
Ernest Lehman  
Lena L. Pierce Fund of The Oregon Community Foundation  
Florence & Edgar Leslie Charitable Trust  
Mary and Howard Lester  
George and Sue Levin  
Mr. and Mrs. Stephen A. Levin  
Leon and Sandra Levine  
Roberta Libby  
Mr. John Licht, J.D.  
Lifenet Inc.  
The Lincy Foundation  
Fay J. Lindner Foundation  
Rube E. Lohman Estate  
Ida Loper  
Gay & Erskine Love Foundation Inc.  
Greg Luinstra  
E. M. Lynn Foundation  
Theodore Luce Charitable Trust  
Mr. and Mrs. Robert Machiz  
Macy's  
Macy's Herald Square  
Madden Family Foundation  
Kenneth C. Maddox  
Dr. George Magovern Sr. and Mrs. Ann Magovern  
Mr. and Mrs. Marion "Mac" Magruder  
Harry T. Mangurian Jr. Foundation Inc.  
Manowitz and Drillings Family Foundation  
Ben B. & Iris M. Margolis Foundation  
Mr. and Mrs. Steven A. and Katherine N. Markel  
Joseph G. Markoly Foundation  
Ellen L. Marmer, M.D.  
Marmot Foundation  
Mr. and Mrs. J. Marriott Jr.  
J. Willard and Alice S. Marriott Foundation  
Daniel G. Marsh  
Grace Marshall  
The Martin Foundation  
Mr. George Martin  
Mary E. Martin Trust  
Mary Kay Cosmetics Inc.  
Carlos & Marguerite Mason Foundation  
Jean & William K.H. Mau Foundation  
Mr. and Mrs. Fenton L. Maynard  
Mr. Frederick Maxfield  
Ms. McColgan



## HEART & STROKE CHAMPIONS

McConnell, Jones, Lanier & Murphy LLP  
Mr. Robert McCrary, J.D.  
Ellice McDonald  
John P. McGovern Foundation  
Callie D. McGrath Charitable Foundation  
MD Anderson Cancer Center  
The Medallion Foundation Inc.  
Medtronic Inc./Medtronic Foundation  
Mr. Scott Meier, J.D.  
Mellam Family Foundation  
Memorial Hermann Healthcare System  
Merck & Company Inc.  
Mercy Health Partners - Cincinnati  
Merrill Lynch & Co. Foundation Inc.  
Merrill Lynch & Co. Inc.  
Methodist Hospital  
The Methodist Hospital System  
Aaron & Rachel Meyer Memorial Foundation  
Mr. Michael Michalski  
The David B. Miller Family Foundation  
Mrs. Dwight W. Miller  
Sydell L. Miller  
Mr. Victor Mills  
The Greater Milwaukee Foundation Inc.  
The Late Mr. Joseph B. Modoski  
Ralph Money  
Gerald E. Montgomery  
Harry C. Moores Foundation  
Ms. Beth Morean  
Dean F. Morehouse  
Moreno Family Foundation  
Harry S. Moss Heart Trust  
Drs. Nelson and Ann M. Mostow  
Morton Mower, M.D.  
Mr. and Mrs. Paul T. Mueller  
Charles N. Mullavey, Esq.  
Mr. and Mrs. John Mullenholz  
Ronald D. Murray  
John P. Murphy Foundation  
Dr. Rao Musunuru, M.D., FAHA  
Mr. and Mrs. Anthony Myura  
Naifeh Realty Company  
Ms. Joyce Nakamura, J.D.  
Ms. Jean M. Nappi  
Ms. Christy Nasbe  
National Cardiovascular Partners  
National Third Parties  
Lloyd Nelson  
Mr. and Mrs. John R. Newsom  
NFL Charities  
Nicholas Family Foundation  
Nintendo of America Inc.  
William & May D. Norris Foundation  
Northwestern Mutual Financial Network  
Mr. and Mrs. Andrew Novak  
Mr. David Norton

Novartis Pharmaceuticals Corporation  
Moses D. Nunnally Charitable Trust  
Charles Z. Offin Charitable Trust  
OGE Electric Services  
Paul Ogle Foundation Inc.  
Ms. Mary O'Hern  
Oklahoma Cardiovascular Associates  
Oklahoma City Clinic/Global Health  
Omron Healthcare Inc.  
Mr. and Mrs. Alton J. O'Neil  
Shawn Orr  
Janet and Robert Osborn  
PacifiCare Foundation  
Padula Foundation  
The Park Foundation  
Mr. Patrick M. Park  
Mary Morton Parsons Foundation  
Jean R. Peacock Trust & AR Peacock Trust  
The E. M. Pearson Foundation  
Mr. Thomas Peebles  
The Peierls Foundation  
Richard C. & Karen E. Penfold Family Foundation Inc.  
The Nellie Thatcher Perkins Foundation at Union Bank  
Jane Bradley Pettit Foundation  
Mr. and Mrs. David and Mindy Pfeil  
The Pfizer Foundation  
Philips Healthcare  
Dr. and Mrs. Arthur Williams  
Phillips Charitable Trust  
The Bill Phillips Family  
Picower Foundation  
Virginia G. Piper Charitable Trust  
Deborah and Keith Pitts  
Ping Y. Tai Foundation Inc.  
Mr. William Poe  
Mr. and Mrs. William Pope – SunChase Holdings Inc.  
Jim and Beverly Postl  
Mr. and Mrs. Jerry and Stella Preston  
Estate of Catherine R. Price  
PricewaterhouseCoopers LLP  
The Edgar and Elsa Prince Foundation  
The Procter & Gamble Company  
Anne A. Proctor  
The Queen's Medical Center  
W. Rankin & E. Forbes Trust  
Richie and Cece Ray  
Mrs. Ruth Reeves  
Corinne and Alan Reid  
Earl and Bettie Reque  
Donald W. Reynolds Foundation  
Richard S. Reynolds Foundation  
Mr. Bart Rice, J.D.  
The Rich Foundation Inc.  
Marylou and C. Richard  
Mr. Frederick Riecker  
Ms. Kathie Riley, J.D.

Rite Aid Corporation  
Mr. and Mrs. William H. Roach  
Mr. and Mrs. John Roberts  
Mrs. Deloris Robinson  
Dick and Sally Robinson  
Roche Diagnostics  
Anna Rodgers  
William G. Rohrer Charitable Foundation  
The Robert T. Rolfs Foundation  
Ross Stores Inc.  
Mr. and Mrs. Steve and Kimberly Roush  
Paul & Joan Rubschlager Foundation  
Mr. John Russell  
Mrs. Florence Ruston  
Sackler Foundation  
Safeway Inc. and Safeway Foundation  
Saint Thomas Health  
Kelly Sanders  
Ms. Rebecca Sanders  
Sanofi-Synthelabo Pharmaceuticals Inc.  
Ms. Minnie Savage  
Rowena Schaber  
Schaeffer Family Foundation  
Mr. Timothy Schafer, J.D.  
Schering-Plough Corporation  
Sarah I. Schieffelin Trust  
David L. Schlotterbeck  
Joan Schlueter  
Michael Schmidt, J.D.  
Mr. and Mrs. James K. Schuler  
Elizabeth Schumacher  
Mrs. Mildred Schwartz  
Scientific Meetings  
Scios Inc.  
Bertram Scott and Elizabeth Fender  
Seariver Maritime Inc.  
Mr. Mark Selz, Esq.  
Nancy Sexauer Walsh - Sexauer Foundation  
Dr. and Mrs. Charlie Schaeffer  
Mrs. Adele Siegel  
Miriam E. Sinclair Trust  
Dr. and Mrs. Bernard Small  
Joel and Joan Smilow  
A. O. Smith Foundation  
Gordon V. and Helen C. Smith Foundation  
The Lester and Sue Smith Foundation  
The W. W. Smith Charitable Trust  
Mrs. Tianna Soto  
SouthTexas Health System  
David and Stephanie Spina  
Ms. Alana Spiwak  
St. Jude Medical Center  
St. Jude Medical Inc.  
Mr. and Mrs. John and Jeanette Staluppi  
Stamford Hospital - The Regional Center for Health  
Mr. Morgan Stark

Stater Bros. Charities  
Steele Foundation  
Frank H. Stein  
Leonard and Shirley Sterling  
Strake Foundation  
Strouds  
Mr. Paul Stuber, J.D.  
Subway  
Suncoast Cardiovascular Research and Education Foundation  
Foundation Funded by Helen Harper Brown  
SuperValu Inc.  
Mr. Kent Sutherland, J.D.  
Sutter Heart & Vascular Institute  
Sutter Medical Center - Sacramento, CA  
Sy Syms Foundation  
Sykes Enterprises Inc.  
Takeda Pharmaceuticals, North America  
The Tamarind Foundation  
Mr. and Mrs. Ted Tarone  
Dr. Alfred Tector, M.D., M.S.  
Mr. and Mrs. John W. Teets/  
The John & Nancy Teets Charitable Foundation  
Tenet Healthcare Foundation  
The David Tepper Charitable Foundation Inc.  
Texas Children's Hospital The Woodlands  
Theresa A. Thomas Memorial Foundation  
TMG Partners  
Tomball Regional Medical Center  
Mr. and Mrs. Robert J. Tomsich  
Tracinda Corporation  
Alfreda Trigiani  
Mr. and Mrs. Donald J. Trump  
The Turner Foundation  
The Tyler Foundation  
The Valley Foundation  
The Vradenburg Foundation  
United Healthcare  
United Healthcare Services Inc.  
United Way of Central Iowa  
United Way of Central Maryland  
United Way of Dane County  
United Way of Greater Kansas City  
United Way of Greater St. Louis  
United Way of the Midlands  
United Way of Metropolitan Chicago  
United Way of the Plains  
United Way of San Antonio & Bexar County  
University Health System  
University of North Texas Health Science Center  
UPMC University of Pittsburgh Health System  
U.S. Development/Nicholas Family Foundation  
Kathryn and Leo Vecellio

Max and Minnie Tomerlin  
Voelcker Fund  
Richard and Judy Voltmer  
John Vryhof, J.D.  
Theresa Wade  
The Sadie and George P. Wakefield Residuary Trust  
Walgreens Company  
Walmart Foundation  
Mrs. Nancy Sexauer Walsh  
Charmaine and Dan Warmenhoven  
The Wasly Family Foundation Inc.  
Eileen Waterman Trust  
S.B. Waterman & E. Blade  
Charitable Foundation Inc.  
C. Scott and Dorothy E. Watkins Charitable Foundation  
The Harry & Jeanette Weinberg Foundation  
Mrs. Roberta Weiner  
Carole and Marcus Weinstein, Allison P. Weinstein  
William E. and Aenid R. Weisgerber Foundation  
Wells Fargo Bank  
Mr. Hubert Wen  
Paul Wenz, J.D.  
Clarence Westerberg  
George and Carolyn Whiting  
Charles B. Wilder Trust  
Robert N. Wildrick  
Mrs. Norman C. Willcox  
Mr. Jerry Williams  
Luree D. Wilson  
Mr. and Mrs. E. Carlton Wilton Jr.  
Henry and Cindy Wilton  
Stanley Winklevoss  
Ms. Janie Winjum and Mr. George Hides  
Mr. Barry Wistreich  
Mrs. Morton Wolosoff  
Women's Board Greater Washington Region Division of the Mid-Atlantic Affiliate  
Wood-Claeysens Foundation  
Woodlands North Houston Heart Center  
Robert W. Woodruff Foundation  
Mr. and Mrs. Robert Wood  
Mr. James Woods  
Dr. and Mrs. Ronald H. Woody  
Wyeth-Ayerst Pharmaceuticals  
Natalie Yu  
Dr. Zachariah Zachariah, M.D., FAHA  
Mr. Richard Zahn  
Rodney Zeeb, J.D.  
Mr. John Zglobicki  
Norma Zimdahl  
Anneliese Zimmer

## GIVING IN 2011-12

### \$1 million and above

Boehringer Ingelheim  
Campbell's  
Jenny Craig  
Laerdal  
J. Willard and Alice S. Marriott Foundation  
Macy's  
Merck  
Ross Stores  
Walmart Foundation  
WellPoint

### \$999,999 - \$500,000

Abbott Laboratories Employee Giving Program  
Belk  
The California Endowment  
DCP Midstream  
Mr. Thomas Peebles  
Union Bank  
Walgreens  
Walmart Stores Inc. Employee Giving Program

### \$499,999 - \$250,000

Ascension Health Ministry Service Center  
California Academy of Family Physicians  
Catholic Health Partners  
The Christ Hospital, Cincinnati, OH  
Genentech  
J&J/Listerine  
Marathon Oil Company Foundation  
Medtronic Foundation  
MetLife Foundation  
The New York Community Trust - The Peter G. Peterson and Joan Ganz Cooney Fund

Philips  
Quaker Oats  
Rite Aid  
Scentisy  
St. Jude Medical Inc.  
Stater Bros. Charities  
Texas Children's Hospital  
Unilever  
United Healthcare Services Inc.  
United Way of Central Maryland  
United Way of the Plains  
US Bank National Association  
Walgreens Employee Giving Program  
Women's Board Greater Washington Region Division of the Mid-Atlantic

### \$249,999 - \$100,000

103.7 FM Radio Sophie  
Abbott Fund  
Advocate Health Care Support Center

Aetna Foundation  
AIG Matching Grants Program  
Aiken Womens Heart Board  
American Electric Power  
The Annenberg Foundation  
Anthem BlueCross and BlueShield  
Anybill  
Aon Corporation  
AstraZeneca  
Bakersfield Magazine  
Bank of America NA  
Mr. and Mrs. Arthur Barter  
Ward Beaudry  
Bender Foundation Inc.  
Blain Supply  
BlueCross BlueShield of South Carolina  
BlueCross BlueShield of Texas  
BMW of Honolulu/BMW of North America  
BNY Mellon Wealth Management  
Bon Secours Health System  
Ms. Wilma Booth, LPN  
Branch Banking & Trust Company  
Bravo Health  
Bristol-Myers Squibb  
Canola Council of Canada  
Cardinal Health Foundation  
CareFirst BlueCross BlueShield of Maryland  
Catholic Health East  
Catholic Health Initiatives  
CBS Radio Las Vegas  
Chesapeake Operating Inc.  
Chevron Corporation  
Chickasaw Nation  
Clear Channel Radio  
Cleveland Clinic  
Community Health Charities of Texas  
Compass Group  
Connecticut Community Foundation-Margaret Hallden Fund  
ConocoPhillips  
Costco Wholesale  
CVS Caremark  
Dakota Medical Foundation  
Deloitte  
Dignity Health  
The Irene L. Egelston Foundation  
El Camino Hospital/Fogarty Institute for Innovation  
Emory Healthcare  
EQT Foundation Inc.  
Ernst & Young US LLP  
Euro Pro  
ev3 Inc.  
FedEx Ground Package System  
Fidelity Charitable Gift Fund  
First American Payment Systems LP  
Florida Hospital Tampa Bay Division -



# HEART & STROKE CHAMPIONS

|   |   |  |   |  |  |  |
|---|---|--|---|--|--|--|
| Florida Hospital Long Term Acute Care Center          | Memorial Hermann Hospital System                    | University of Wisconsin Hospital & Clinic        | Baylor Jack and Jane Hamilton Heart and Vascular Hospital, Dallas, TX | Detroit Medical Center Guild                 | Intuit Foundation  | Merck Partnership for Giving                 |
| Florida Hospital Tampa                                | Memorial Healthcare System                          | US Bancorp Foundation Grants Program             | Baylor University   | The Duke Energy Foundation                   | Investors Savings Bank                                   | Methodist Le Bonheur Healthcare              |
| Florida Hospital Carrollwood                          | Memorial Hermann Healthcare System                  | Vanderbilt University Hospital, Nashville, TN    | BB&T  | Duke Medicine                                | Iowa Methodist Medical Center, Des Moines, IA            | MidFirst Bank                                |
| Florida Hospital North Pinellas                       | Mercy Accounts Payable Shared Services              | VCU Health System                                | Beth Israel Deaconess   | Dworken & Bernstein Co. LPA                  | JE Dunn Construction                                     | Mari Anne Miller Trust                       |
| Florida Hospital Pepin Heart Institute                | Methodist Hospital - Houston, TX                    | Visa International                               | BJ's Wholesale Club Inc.  | E. & J. Gallo Winery                         | J.D. Byrider Advertising Group                           | Monterey Peninsula Foundation                |
| Florida Hospital Tampa Bay Division                   | Microsoft Licensing Group                           | Walgreens Co. Corporate Offices                  | BKD Foundation  | Earl Swenson Associates Inc.                 | J and J Sales & Logistics Company LLC                    | Mount Clemens Regional Medical Center        |
| Florida Hospital Wesley Chapel                        | Matching Gifts Program                              | WaWa Inc.  | BlueCross BlueShield of Florida                                       | Edward Jones                                 | Jo-Ann Fabric and Craft Stores                           | Munday Enterprises                           |
| Florida Hospital Zephyrhills                          | Midland Group                                       | Wells Fargo Bank                                 | BlueCross BlueShield of Kansas City                                   | El Camino Hospital, Mountain View, CA        | Jehish Hospital & St. Mary's                             | Munroe Regional Medical Center               |
| FMC Energy Systems                                    | Midwest Division Office                             | Wells Fargo Foundation                           | BlueCross BlueShield of Louisiana                                     | Eli Lilly                                    | John Nau III   | Ms. Jean M. Nappi                            |
| FMC Technologies                                      | Midwest Regional Medical Center                     | Willbros U.S. Holdings Inc.                      | BlueCross Blue Shield of North Carolina                               | Elite Island Resorts                         | Johns Hopkins Medicine                                   | National Philanthropic Trust                 |
| The GE Foundation                                     | Mr. and Mrs. David and Carolyn Miller               | XTO Energy                                       | BlueCross BlueShield of South Carolina                                | Enbridge US Inc.                             | JPMorgan Chase Bank N A                                  | Nationwide Mutual Insurance Company          |
| General Mills (Cheerios)                              | The David B. Miller Family Foundation               | Yahoo Inc.                                       | BlueCross BlueShield of South Carolina Foundation                     | Energry                                      | KABC-AM Radio Inc.                                       | NBC TV Channel 3                             |
| The Glenmede Trust Company                            | Mimi's Café   | <b>\$99,999 - \$50,000</b>                       | BNY Mellon  | EOG Resources Inc.                           | Kaiser Foundation Health Plan of Ohio                    | Network For Good Employee Giving Program     |
| Great-West Life & Annuity Insurance Co.               | North Shore Long Island Jewish Health               | Ability Magazine                                 | Boca Raton Regional Hospital, Boca Raton, FL                          | Erie Hall Meyer Charitable Fund Inc.         | Kaiser Foundation Hospital - Hawaii Region, Honolulu, HI | Nexlon Co. Ltd.                              |
| H.E.B.  | The Northern Trust Company                          | Accenture  | Boehringer Ingelheim Pharmaceuticals                                  | Essentia Health, Fargo, ND                   | Kaiser Foundation Hospital - Santa Rosa, CA              | Noble Energy Inc.                            |
| Harris Bank   | Novartis  | Accenture LLP                                    | The Boeing Company  | European Equities                            | Kaiser Permanente  | Northern California Medical Associates       |
| HCA West Florida Division - Brandon Regional Hospital | NYU Hospitals Center                                | AEI Energy                                       | Bon Secours Charity Health System                                     | Exempla Healthcare                           | Kaiser Permanente - Honolulu                             | Northern Indiana Public Service Co           |
| Edward White Hospital                                 | NYU Langone Medical Center                          | AEI Services LLC                                 | Bon Secours Richmond Health System                                    | Farmland Foods Inc.                          | Kaiser Permanente - Pasadena                             | Northwest Medical Center of Springdale       |
| Largo Medical Center                                  | Oncor Electric Delivery                             | Alabama Power Company                            | Borgess Medical Center, Kalamazoo, MI                                 | Fifth Third Bancorp                          | Kaiser Permanente - Vallejo                              | Norton Healthcare                            |
| Northside Hospital                                    | Oregon Health & Science University, Portland, OR    | Albemarle Corporation                            | BP Corporation North America Inc.                                     | First Niagara Bank                           | KCOY(CBS)/KKFX(FOX)                                      | Novartis Pharmaceuticals Corporation         |
| Oak Hill Hospital                                     | Orlando Health                                      | Allergan   | Carlisle Foundation   | Florida Hospital                             | Ketchum Charitable Foundation                            | Oceaneering International Inc.               |
| Regional Medical Center Bayonet Point                 | PepsiCo Foundation Employee Matching Gifts Program  | Allscripts Healthcare Solutions                  | Cape Fear Memorial Foundation   | Forest Pharmaceuticals                       | KHS&S Contractors Inc.                                   | Ochsner Health System                        |
| South Bay Hospital                                    | PNC Advisors  | Alon USA LP                                      | Capital One Services Inc.   | Forrest General Hospital                     | Kindred Foundation Inc.                                  | OCI Solar Power LLC                          |
| West Florida Supply Chain                             | Providence Health & Services                        | ALSAM Foundation                                 | Cargill Employee Giving Program                                       | FV Secure                                    | Kindred Healthcare Operating Inc.                        | OhioHealth                                   |
| Health Care Service Corp                              | Providence Healthcare Network, Waco, TX             | Alta Bates Summit Medical Center - Summit Campus | Cargill Inc.  | GE Foundation - Matching Gifts Program       | KLOS 95.5  | The Ohio State University Medical Center     |
| Health Diagnostic Laboratory Inc.                     | Radio One Columbus                                  | Ameren   | Carondelet Health Network   | Geico Philanthropic Foundation               | KOST 103.5   | Omaha Community Foundation                   |
| HealthSouth   | Regence BlueShield of Idaho                         | AmeriCU Credit Union                             | Carroll County Community Foundation                                   | General Dynamics Corporation                 | KPTV Fox 12  | Oracle Corporation                           |
| Holly Corporation                                     | Regions Bank  | Amgen  | Carrington Mortgage Services Inc.                                     | Geoffrey Beene                               | KQMV - Movin 92.5  | Oregon Community Foundation                  |
| Hope Hofmann  | Reliant Energy Charitable Foundation                | Aramark  | Centene Charitable Foundation   | Gerdau                                       | Kraft Foods Global Inc.                                  | The Oregonian                                |
| HP Enterprises LLC                                    | Schneider Electric North America                    | Arbor Pharmaceuticals Inc.                       | Centura Health  | Gibson Dunn & Crutcher LLP                   | Kramer Portraits, New York                               | Our Lady of the Lake Regional Medical Center |
| HSBC Employee Giving Program                          | Schwab Charitable Fund                              | Arcelor Mittal                                   | CenturyLink   | Give With Liberty                            | The Kroger Co. Foundation                                | Outcome Sciences Inc.                        |
| Huntington Memorial Hospital, Pasadena, CA            | Shawnee Mission Medical Center, Shawnee Mission, KS | Artrex   | CGI Federal Inc.  | GlaxoSmithKline                              | Kroger Company   | Owens & Minor Inc.                           |
| Mr. Terry Iles  | Silicon Valley Community Foundation                 | AstraZeneca                                      | Channing Bete Company   | GO2 Marketing                                | KSJD-FM 100.3  | P&G Distributing LLC                         |
| Indiana University Health                             | Silver Eagle Distributors Charitable Fund           | AT&T   | CICF  | Godstone                                     | KTSF Channel 26 Inc.                                     | Pamida Foundation                            |
| Iowa Health System                                    | Simmons Media Group                                 | Atlantic Health System                           | Cincinnati Children's Hospital Heart Institute                        | Golden One Credit Union                      | LabCorp of America Holdings                              | Parker Hannifin Corporation                  |
| IP Casino, Resort, Spa - Biloxi, MS                   | Spectrum Health                                     | BNSF Foundation TX                               | Clear Channel Columbus  | Goldman Sachs & Company                      | Lamar Outdoor  | Partners Healthcare LLC                      |
| Jefferson Regional Medical Center                     | St. Joseph's Hospital of Atlanta                    | Bank of America Charitable Foundation            | Columbia University   | Grady Health System                          | Lee Memorial Health System                               | Partnership Market Office                    |
| Key Bank Association                                  | St. Vincent Health                                  | Bank of America Employee Giving Program          | Community Health Charities  | Grant Thornton LLP                           | The Leith Automotive Family                              | Patriot National Insurance Group             |
| Keybank National Association                          | Subway  | The Bank of America Foundation                   | Community Health Charities Texas                                      | Harliburton Company                          | Lena L. Pierce Fund of The Oregon Community Foundation   | Paul Hasting                                 |
| KING 5 Television                                     | Tenet   | Banner Health                                    | Compuware Corporation   | Harland Clarke                               | The Leon Levine Foundation and Sandra & Leon Levine      | Penn State                                   |
| KP Financial Services                                 | Texas Health Presbyterian Hospital of Denton        | Baptist Health System                            | Coppermark Bank   | Harps Food Stores Inc.                       | Leviton  | Peoples Health                               |
| KPMG LLP  | Toyota Employee Giving Program                      | Baton Rouge Area Foundation                      | CPS Energy  | Hastings                                     | Lewis Gale Medical Center                                | Perfumania                                   |
| KSL Broadcasting Company                              | Triad Isotopes Inc.                                 | Battelle Memorial Institute                      | Crosby Tugs LLC   | Haven Charitable Foundation                  | Mr. and Mrs. Chris and Rebecca Lien                      | Pfizer Foundation Matching Gifts             |
| KyXy 96.5 FM  | Tyco Electronics Corp.                              | BayCare Health System - BayCare HomeCare         | Cutco   | HealthCare Foundation of Greater Kansas City | Lockheed Martin Aeronautics Company                      | Pharmavite                                   |
| Lenox/American Saw & Manufacturing                    | UC Health   | BayCare Regional CBO/Managed Care                | Dade Medical College  | Health Care Service Corporation              | Lockton Companies LLC                                    | Mark and Beth Pharo                          |
| Liberty HealthCare System Inc.                        | UCSD Medical Center, San Diego, CA                  | Morton Plant Mease Countryside/Dunedin           | The Davee Foundation  | Health Quest Systems Inc.                    | Lowell General Hospital, Lowell, MA                      | Philips                                      |
| Lockheed Martin                                       | United Health Group Employee Giving Program         | Morton Plant North Bay                           | Dealer Tire LLC   | The Health Trust                             | Lowes Foods  | Piedmont Heart Institute Physicians          |
| Main Line Services Jefferson Health System            | University Hospitals                                | St. Anthony's                                    | The Richard and Helen DeVos Foundation                                | Hearst Service Center                        | The M & T Charitable Foundation                          | Piedmont Natural Gas                         |
| Mayo Clinic Jacksonville                              | University of Iowa Heart & Vascular Center          | South Florida Baptist Hospital                   | Diablo Magazine   | Hearst Tower                                 | Mr. and Mrs. Robert Machiz                               | Pilot Flying                                 |
| Mayo Foundation for Medical Education & Research      |   | St. Joseph's Hospital                            | DIRECTV   | Heart-A-Rama                                 | Marathon Group Barnabas Health                           | Pioneer Hi-Bred International Inc.           |
| McCarthy Building Companies Inc.                      |   | St. Joseph's Hospital North                      | DIRECTV Systems   | Helios Education Foundation                  | Ben B. & Iris M. Margolis Foundation                     | Virginia G. Piper Charitable Trust           |
| Medica Foundation                                     |   | Bayer Corporation                                |   | Highmark Blue Shield                         | MedAssets  | Pitt Memorial Hospital Foundation Inc.       |
| Medical University Hospital Authority                 |   | Bayhealth Medical Center                         |   | Highmark Foundation                          | MediaOne PA  | Polished Nickel Capital Management           |
|   |   |  |   | The Horizon Foundation                       | Medtronic Cardiovascular                                 | Premiera Blue Cross                          |
|   |   |  |   | Hospira Employee Giving Campaign             |  | Premier Health Partners                      |
|   |   |  |   | Humana                                       |  |  |
|   |   |  |   | The Huntington National Bank                 |  |  |
|   |   |  |   | Independence Blue Cross                      |  |  |
|   |   |  |   | Indian Trail Foundation                      |  |  |
|   |   |  |   | International Game Technology                |  |  |

## HEART & STROKE CHAMPIONS

|   |  |   |  |   |  |   |
|---|--|---|--|---|--|---|
| Presbyterian Hospital Charlotte, Charlotte, NC          | Sutter Medical Center, Sacramento, CA        | Yankee Candle Company, Yelp.com                     | Bakersfield Heart Hospital, Bakersfield, CA    | Capital District Physicians Health Plan Inc.          | Constellation Wines U.S.                     | Enterprises Holdings Foundation                 |
| Prime Therapeutics Corporate Office                     | Take Shape for Life, a Medifast Company      | ZOLL Medical Corp.                                  | Bakersfield Memorial Hospital, Bakersfield, CA | Capital Health Plan                                   | Cook Children's                              | EQG Resources                                   |
| Princess House  | Tampa Bay Lightning                          | <b>\$49,999 - \$25,000</b>                          | Balfour Beatty Construction                    | Cardinal Health                                       | The Cooper Health System                     | Ergon Inc.                                      |
| Pro Sports Club   | Tampa General Hospital                       | 1st Bank  | Ballita Media Inc.                             | Cardiologists LC                                      | Dr. and Mrs. Kenneth and Millie Cooper       | Ergotron Inc.                                   |
| ProHealth Care Inc.                                     | Mr. Robert Tanner                            | Abacus Technology Corporation                       | BancorpSouth                                   | Cardiology Center of Amarillo                         | Corstone Capital                             | The Erie Community Foundation                   |
| ProMedica Health Systems                                | Target Corporation                           | Abbott Laboratories                                 | Bank of America Foundation                     | CardioMEMS Inc.                                       | Michael Covarrubias                          | Mr. Don Eversoll                                |
| PWC   | Tata America International                   | Abbott Medical Optics                               | The Bank of New York Mellon                    | Cardiovascular Consultants                            | Covenant Medical Center, Lubbock, TX         | Expense Disbursement                            |
| Quaker Oats Company                                     | Teachers Credit Union                        | Abbott Vascular                                     | Baptist Health South Florida                   | Care New England                                      | Coveright Surfaces USA Company               | Express Scripts Foundation                      |
| Qualcomm Foundation Matching Gift Program               | Texas Beef Council                           | Abiomed Inc.  | Baptist Memorial Health Care Corporation       | CareFusion  | Covidien                                     | Express Scripts Inc.                            |
| Quest Diagnostics                                       | Texas Emergency Care Specialist              | Acosta Sales & Marketing                            | Mrs. Carol Bartz and Mr. Bill Marr             | Carlisle Clinic                                       | Cox Communications                           | ExxonMobil Corporation                          |
| Quintiles Inc.  | TFC Services Inc.                            | ADP Employee Giving Program                         |  | Carlson Caspers Vandenberg & Lindquist                | Crane Foundation                             | Faegre Baker Daniels LLP                        |
| Ramius LLC/Cowen Group                                  | Time Warner                                  | ADP Inc.  |  | Carle Foundation Hospital                             | Crawford & Company                           | FedEx   |
| Renown Health   | TMG Partners                                 | Advance Auto Parts                                  |  | Carlson Caspers Vandenberg & Lindquist                | Crescent Bank & Trust                        | Mr. and Mrs. Andrew and Raechal Ferguson        |
| Renown Regional Medical Center, Reno, NV                | Torrey Pines Bank                            | Adventist Medical Center, Portland, OR              |  | Carle Foundation Hospital                             | Cross Valley Federal Credit Union            | Ferguson Enterprises Inc.                       |
| Rensselaer Polytechnic Institute                        | Towers Watson                                | Aeroflex  |  | Cedars-Sinai Medical Center, Los Angeles, CA          | Crowder Construction Company                 | First Commonwealth                              |
| Rex UNC Health Care                                     | Toyota Motor North America Inc.              | Affiliated Computer Services Inc.                   |  | CenterPoint Energy Gas Service                        | The Crown Family                             | First Data Merchant Services                    |
| Richemont North America Inc.                            | Toyota Motor Sales, USA                      | Affinity Medical Center, Massillon, OH              |  | CenturyLink Inc.                                      | Crown Imports                                | First Federal                                   |
| Richmond FSC  | TriHealth                                    | Aflac   |  | Charles Schwab  | Crozer-Keystone Health System                | First National Bank                             |
| Rick Case Enterprises                                   | Trinity Health                               | Ahn Central Services LLC                            |  | The Rhoda & David Chase Family Foundation             | CSX Corporation                              | FirstBank Holding Company (MG) FIS              |
| Robert and Cheryl Sanford                               | Trinity Industries Inc.                      | Alaska Cardiovascular Research                      |  | Chevron Humankind Matching Gift Program (MG)          | CSX Corporation                              | Florida Health Plan                             |
| Roel Construction Company Inc.                          | TriStar Health                               | Alaska Heart Institute                              |  | Francis Chiaramonte                                   | CVS Caremark                                 | Administrators LLC                              |
| Dr. Lamar and Theresa Roemer                            | Donald J. Trump Foundation                   | Albanese Organization Inc.                          |  | Childrens Hospital & Medical Center                   | Daiichi Sankyo                               | Florida Heart Institute                         |
| Mr. Henk B. Rogers                                      | Tucson Medical Center, Tucson, AZ            | Alegent Health                                      |  | Christiana Care Health System                         | Daimler                                      | Flowserve Corporation - HQ                      |
| Rosendin Electric Inc.                                  | Turner Construction Company                  | Alere   |  | CHRISTUS St. Frances Cabrini Hospital, Alexandria, LA | Dallas Foundation                            | Ford Motor Company                              |
| Saint Francis Hospital                                  | UHealth-University of Miami                  | Alexander Open Systems                              |  | Cigna   | Dallas Southwest Osteopathic Physicians Inc. | Forest Laboratories Inc.                        |
| Saint Francis Hospital and Medical Center, Hartford, CT | Miller School of Medicine                    | Alina Health System                                 |  | Cigna Corporate Headquarters                          | Datron World Communications                  | Forest Labs                                     |
| Salesforce.com Foundation                               | UMass Memorial Health Care Inc.              | Mr. Joshua Allyn                                    |  | Citi  | DCP Midstream (MG)                           | Franciscan Alliance Inc.                        |
| San Francisco Business Times                            | United Health Group Employee Giving Campaign | Amdocs Inc.   |  | Citizens Bank   | Del Monte Corp.                              | Franciscan Health System                        |
| The San Francisco Foundation                            | The University Hospital for Albert Einstein  | The American College of Cardiology Virginia Chapter |  | Citizens Energy Group                                 | Ralph de la Torre and Wing-sze Cheung        | French Hospital Medical Center                  |
| Sanford Health  | University of Louisville                     | American Express                                    |  | CITRIX  |  | Fulbright & Jaworski LLP                        |
| Sanford Medical Center - Fargo, ND                      | University of Mississippi Medical Center     | American Legacy Foundation                          |  | City of Boynton Beach                                 |  | The Fullerton Foundation Inc.                   |
| Sanofi Aventis  | University of New Mexico                     | American Nonsmokers' Rights                         |  | Mr. Chad Clay   |  | Future Business Leaders of America              |
| Seattle Children's Hospital                             | University of Virginia Health System         | American Transportation                             |  | Clear Channel Cleveland                               |  | Gap Foundation Matching Gift Program            |
| SEFCU Federal Credit Union                              | UPMC Health Plan                             | Amerigroup Charitable Foundation                    |  | Mr. and Mrs. Larry P. Clemmens                        |  | Gaston Memorial Hospital                        |
| Seiko   | UPS  | Ameriprise Financial Annual Giving Campaign         |  | Cleveland Clinic Florida                              |  | GE Capital Corporation                          |
| Shoppers Food and Pharmacy                              | UPS Foundation                               | AMS Outsourcing                                     |  | Mr. Morgan Cline                                      |  | Genentech Inc.                                  |
| Siemens   | Vanguard Charitable Endowment Program        | Andrews Kurth LLP                                   |  | Coca-Cola Refreshments                                |  | General Dynamics Information Technology         |
| Sinai Hospital, Baltimore, MD                           | Vanguard MacNeal Hospital, Berwyn, IL        | Anheuser-Busch Inc.                                 |  | The Community Foundation in Jacksonville              |  | General Electric Company                        |
| Sisters of Charity                                      | Verizon                                      | Aon Construction Services Group                     |  | Coliseum Health System                                |  | General Mills Inc.                              |
| The Snook Foundation                                    | Wake Forest Baptist Medical Center           | ARINC Incorporated Employee Giving Program          |  | Community Health Charities of Kansas & Missouri       |  | General Motors LLC                              |
| Sodexo Inc. & Affiliates                                | Walmart Stores Inc.                          | Arkansas BlueCross & BlueShield                     |  | Community Medical Center                              |  | General Parts Inc.                              |
| SoftLayer   | Washington University                        | Arkansas Heart Hospital                             |  | Community Newspapers/Portland Tribune                 |  | Georgia Power Foundation Inc.                   |
| Southeastern Emergency Equipment                        | Wellpoint NextRx                             | Arkansas Heart Hospital                             |  | Company Hospitals of Indiana                          |  | Giant Eagle Inc.                                |
| Southern Company Services Inc.                          | Wells Fargo Advisors LLC                     | Ashe County Heart Association                       |  | Compass Bank  |  | The Gibbs Company                               |
| St. Elizabeth Health Center                             | West Penn Allegheny Health System            | Astellas Pharma US Inc.                             |  | Computech Inc.  |  | Gilead Sciences Inc.                            |
| St. John Health System                                  | Westchester Medical Center                   | Astellas Polaris                                    |  | ConAgra - Stockton                                    |  | Glazer's Wholesale Drug Company Inc.            |
| St. Joseph Medical Center, Kansas City, MO              | Western-Southern Financial Group             | Astral Health & Beauty Inc.                         |  | ConAgra Foods   |  | Global Fitness Holdings LLC                     |
| St. Vincent's Health System - Birmingham, AL            | White Memorial Hospital                      | ATAS Insurance Services                             |  | ConAgra Foods Enterprise Services Inc.                |  | Godstone Ranch Motorsports Inc.                 |
| Stephanie Spina   | Whiteco Industries Inc.                      | Athens Regional Medical Center, Athens, GA          |  | Conde Nast  |  | Good Shepherd Health Systems                    |
| Sterling Jewelers Inc.                                  | William G. Jackson                           | Atlantic City Electric                              |  | Connecticut General Life Insurance Company            |  | Franch & Katina Gougeon                         |
| Steward Health Care System LLC                          | WNEP-TV 16                                   | Augusta Health Medical Center, Fishersville, VA     |  | Consert Inc.  |  | Granger Matching Charitable Gifts Program       |
| Stormont-Vail HealthCare Inc.                           | Wolfe Enterprises                            | Aultman Health Foundation                           |  |   |  | Greatbatch Inc.                                 |
| Summa Health System                                     | Wood-Claeysens Foundation                    | Avera Health  |  |   |  | Greater Baltimore Medical Center, Baltimore, MD |
| SunTrust Banks Inc.                                     | Xilinx Inc.                                  | Baker Tilly   |  |   |  | Greater Kansas City Community Foundation        |
| SuperValu Inc.  | XLTN 104.5FM Radio Latina                    | Baker Donelson Bearman Caldwell & Berkowitz PC      |  |   |  | Greenville Hospital System                      |

## HEART & STROKE CHAMPIONS

|  |   |   |  |   |  |   |
|--|---|---|--|---|--|---|
| Grosvenor Capital Management LP  | IntegraColor  | Liberty Mutual Group Inc.                   | Mrs. Samantha Miller   | Parkview Health                                 | Riversource Life Insurance Company                       | Edward E. Snow  |
| The Guardian Life Insurance Company of America                                     | Integrus Health   | Lifespan                                    | MINI of Hawaii   | Partners In Health Admin                        | Company  | Snyder's-Lance  |
| Halliburton Giving Choices   | The InterTech Group   | Lilly USA LLC                               | Mississippi Power Company  | Dr. Robert Pascotto, Sr.                        | Riviera Magazine   | Solstas Lab Partners                                    |
| Hannafor Bros. Co.   | Investment Management Services  | Linde North America Employee Giving Program | Missouri Foundation for Health                                       | Paxton Van Lines Inc.                           | RNDC South Carolina LLC                                  | South Carolina Electric and Gas                         |
| The Harrah's Foundation  | Ivy Tech Foundation   | Linear Technology Corporation               | Mon General Hospital   | Payne Family Foundation                         | Robert Wood Johnson University                           | South Dakota Beef Industry Council                      |
| Mr. and Mrs. Bill and Crissy Haslam  | Jabil Global Services Memphis   | Linn Operating Inc.                         | Monsanto   | PCL Construction Enterprises Inc.               | Hospital Hamilton, Hamilton, NJ                          | Spartanburg Regional Healthcare System, Spartanburg, SC |
| Mr. and Mrs. James Haslam III  | J & J Pharmaceutical R&D LLC  | Locke Lord Bissell & Liddell LLP            | Morgan Keegan & Company Inc.   | Peabody Energy                                  | Roche Diagnostics  | Spirent Communications                                  |
| Hatch Associates Consultants Inc.  | Jefferson University Hospitals  | Loma Linda University Medical Center        | Mount Carmel Health System   | Penn Presbyterian Hospital                      | Ronald & Joyce Wanek Foundation                          | Andrew Spokes   |
| John P. Havens   | John Muir Health  | Lourdes Rehabilitation                      | Mount Clemens  | Perkins + Will                                  | Roper St. Francis Healthcare                             | SSM Health Care System                                  |
| Hawaiian Electric Company, Maui Electric Company and Hawaii Electric Light Company | Johnson & Johnson   | Lovelace Health Systems Inc.                | Mount Sinai School of Medicine                                       | Perot Systems Dell Marketing LP                 | Ross Stores Inc.   | St. Anthony's Medical Center                            |
| HD Supply Facilities Maintenance   | JPMorgan Chase Foundation   | Loyola University Health System             | Mount Carmel Health System   | Ms. Pamela J. Perrott                           | Roth Staffing Companies LP                               | St. Dominic Health Services                             |
| Health Care REIT Inc.  | JUSTGIVE Employee Giving Program                                      | Stephen Luczo                               | MP Sports Club Operating Company LLC                                 | The Penn Mutual Life Insurance Company          | Rubber City Radio Group Inc.                             | St. Elizabeth Health Center, Youngstown OH              |
| Health NOW   | Kaiser Foundation Hospitals - San Jose, CA                            | M & T Bank                                  | MSA - The Safety Company   | Mr. and Mrs. David and Mindy Pfeil              | Rush University Medical Center, Chicago, IL              | St. Francis Hospital Inc., Columbus, GA                 |
| Healthfirst Management Services LLC  | Kaiser Permanente Center - Portland                                   | Macy's Corporate Services                   | MultiCare Health System  | Pfizer Inc.                                     | Russell and Anne Marie Levine                            | St. John Providence Health System                       |
| Healthpartners Regions   | Kaiser Realty Inc.  | Macy's Foundation                           | Multi-Management Services  | PHCG Brand Headquarters                         | Ruth Skidmore and Brooke Clyde                           | St. Joseph Hospital                                     |
| Healthways Inc.  | Daniel and Susan Kane   | Magna Services of America Inc.              | Murray Company   | Philadelphia Union Foundation                   | Ryan Foundation  | St. Joseph's Medical PC                                 |
| The HEART HOSPITAL Baylor Plano  | Kansas City Series of Lockton Companies LLC                           | Main Line Broadcasting LLC                  | Jean M. Nappi Revocable Trust  | Philips Respironics                             | S. B. Ballard Construction Co.                           | St. Joseph's Regional Medical Center                    |
| Heart Hospital of Lafayette  | Kansas Heart Hospital   | Maine Medical Center, Portland, ME          | Ms. Christyne Nasbe  | Phoebe Putney Memorial Hospital                 | Safety-Kleen Systems Inc.                                | St. Luke's Hospital, Cedar Rapids, IA                   |
| Helen Keller Hospital  | KBNT - TV Channel 17 KDC  | Marian Regional Medical Center              | National Association of Professional Women                           | Physicians Regional Medical Center              | Saint Mary's   | St. Mary's Medical Center, Huntington, WV               |
| Hellman Family Foundation  | Kelley Blue Book  | Steven Markel                               | National Oilwell Varco   | The Pittsburgh Foundation                       | Saint Vincent Health Center, Erie, PA                    | St. Mary's Regional Heart Center                        |
| Henry Crown & Company  | Kellogg's Corporate Citizenship Fund                                  | MarketNET                                   | Navigant Credit Union  | Pinnacle National Bank                          | Saks Incorporated  | St. Vincent's Health System - Jacksonville              |
| Henry Ford Health System   | Kelly Integral Solutions  | Mr. and Mrs. Scott Marks                    | NBC Bay Area   | The Plain Dealer                                | Mr. and Mrs. Fred Salter                                 | Stanford University Medical Center                      |
| Bob L. Ford Foundation   | Kennametal Foundation   | Marsh                                       | NCH Healthcare System Inc.   | Plastek Industries                              | San Diego Daily Transcript                               | Staples Inc.  |
| E.L. Herider Foundation  | Kentucky Beef Council   | Marsh Supermarkets                          | NCI Building Systems   | PNC Bank  | San Jacinto Methodist Hospital                           | State Bank & Trust Company                              |
| The Hershey Company  | Kettering Medical Center  | Martha S. Martin                            | Nebraska Medical Center  | PNC Bank Foundation                             | San Jacinto Methodist Hospital, Baytown, TX              | State Street Global Markets                             |
| Hewitt   | Key Bank  | The Mascaro Family Foundation               | Nemours Foundation   | PricewaterhouseCoopers LLP                      | San Manuel Band of Mission Indians                       | Staten Island University Hospital, Staten Island, NY    |
| Highmark Inc.  | KFBK-FM 92.5  | MasTec Inc.                                 | Neurosurgeal Associates PC   | Prime Therapeutics                              | Santitas Ynez Band of Chumash Indians                    | Stires-Stark Family Foundation                          |
| Highwoods Properties Inc.  | KGET-TV Channel 17  | Mayo Clinic                                 | New Jersey Manufacturers Insurance Group                             | Progress Energy Service Company LLC             | SAP America Inc.   | StubHub   |
| Hillcrest Healthcare System  | Kirkland & Ellis LLP  | McGriff Seibels & Williams                  | New York Community Bank Foundation                                   | Protective Life Corporation                     | The Savings Bank Life Insurance Company of Massachusetts | Summit Medical Group                                    |
| Hilton Head Hospital, Hilton Head Island, SC                                       | Kippkoman Sales USA Inc.  | McJunkin Red Man Foundation                 | New York Presbyterian Hospital - EMS                                 | Providence Alaska Medical Center, Anchorage, AK | Scottrade Inc.   | Gertrude Sundgren                                       |
| Hilton Worldwide   | Kilpatrick Townsend & Stockton LLP                                    | McKesson Corporation                        | New York University School of Medicine                               | Prudential Foundation                           | The Scotts Company LLC                                   | SunTrust Banks Inc.                                     |
| Dr. and Mrs. Satish Hiremath   | Kimberly-Clark  | McKesson Foundation                         | NewBridge Bank   | Pseco   | SCP Distributors LLC                                     | SunTrust Bank   |
| HMAA   | Mr. Peter Kinnear   | McLaren-Flint - Flint, MI                   | Newell Rubbermaid  | Publicis Healthcare Communications Group        | Scripps Chula Vista Hospital                             | SuperValu Foundation                                    |
| Hodgson Russ LLP   | KLTV 7  | McLeod Health                               | NextGen Healthcare   | Qualcomm  | Mr. and Mrs. James Seabury III                           | Sutter Health   |
| Hofmann Family Foundation  | William C. Knapp Charitable Foundation                                | McWane Inc.                                 | Nicholas Family Foundation   | Quality Oil Company LLC                         | Laureen Seeger, M.D.                                     | Sutter Medical Center of Santa Rosa                     |
| Holly Frontier   | Koch Companies Public Sector  | MedAssets Supply Chain Solutions            | Nielsen Company  | Qualres & Brady LLP                             | Self Regional Healthcare                                 | SVL Foundation  |
| Holy Cross Hospital  | Kohl's  | Medco Health Solutions Inc.                 | Nor-Cal Beverage Company Inc.  | The Queen's Medical Center                      | Sephora USA Inc.   | SW Florida Lexus Dealers:                               |
| Honda South Carolina Manufacturing   | Jerry and Terri Kohl Family Foundation                                | Medical Mutual of Ohio                      | Norris Home Furnishings  | R T Foundation                                  | Seton  | Scanlon Lexus/Germain Lexus                             |
| Honolulu Star-Advertiser   | Kraft Foods   | The Medicines Co.                           | North Ohio Heart   | Rabobank, N.A.                                  | Sharp  | Swedish Medical Center, Seattle, WA                     |
| HORAN  | Kraft Foods Foundation  | MedStar Health                              | Northside Hospital   | Ralph Lauren Corporation                        | The Shaw Group Inc.                                      | Sy Syms Foundation                                      |
| Horizon BlueCross BlueShield of New Jersey   | Kroger  | Mellam Family Foundation                    | Nova Chemicals   | Ralphs/Food 4 Less                              | Shore Heart Group PA                                     | Symantec  |
| Horizon Services Inc.  | KSFI - FM 100.3   | Memorial Medical Center                     | Novant Health Inc.   | Mrs. Barbara Randall                            | Siemens Caring Hands Foundation                          | Tacoma Rainiers - Corporate Office                      |
| Hospira Inc.   | Laboratory Corporation of America                                     | Mercedes-Benz of North America Inc.         | Nucor Steel South Carolina   | Rapides Regional Medical Center, Alexandria LA  | Silver Eagle Distributors Inc.                           | Target  |
| Hospira Inc. Employee Giving Program   | LAC - Harbor - University of California at Los Angeles Medical Center | Merck & Co. Inc.                            | NV Energy  | Raymond James Financial                         | Simmons First National Bank                              | TCF Foundation  |
| Mr. and Mrs. James D. Howard Jr.   | Lafayette General Medical Center                                      | Mercy Medical Center, Canton, OH            | NYU Cardiology - Fishman   | Regal Entertainment Group                       | Simons Petroleum   | TD Bank   |
| Howdy Honda  | Lakehead Constructors Inc.  | Methodist Hospital                          | Oil States International   | Regional Medical Center of Acadiana             | Singing River Health System                              | TD Charitable Foundation                                |
| IASIS Glenwood Regional Medical Center   | Lanxess Corporation   | Metropolitan Health Networks                | Oklaoma Blood Institute  | Republic Services                               | Skanska USA Building Inc.                                | TE Connectivity   |
| IASIS Healthcare   | Lexington Medical Center  | Mr. Robert Meyerhoff                        | Omicare Inc.   | Mrs. Joyce Richardson                           | Smart & Final Stores                                     | Team Health Inc.  |
| IBM Employee Giving Program  | Lexus of Lincoln  | Miami Children's Hospital                   | Omron  | The Richmond Accounting Principals              | Mr. and Mrs. Brad and Alys Smith                         | Technip USA Inc.  |
| Icelandic USA  | LHC Group Inc.  | Midland Memorial Hospital, Midland, TX      | Oracle Corporation Matching Gifts Program                            | Riverside Community Health Foundation           | Smuckers   | Tek Systems   |
| Illinois Tool Works Foundation   | Liberty Mutual Foundation Match                                       | Miller Electric Company                     | Oregon Health & Science University - Cardiothoracic Surgery Division |   | SNR Denton US LLP  | Teleperformance USA                                     |
| Insurance Auto Auctions Inc.   |   | Mrs. Carol Miller                           | OU Medical Center  |   |  | The Tenenbaum Foundation                                |
|  |   | Miller Pipeline Corporation                 | P F Inc.   |   |  |   |
|  |   |   | Paragon Healthcare Inc.  |   |  |   |
|  |   |   | The Parker Hannifin Foundation                                       |   |  |   |



## HEART & STROKE CHAMPIONS

|   |  |   |   |  |  |  |
|---|--|---|---|--|--|--|
| Tennova<br>Tetra Technologies Inc.<br>Texas Health Gives<br>Thompson Construction Group Inc.<br>Thomson Reuters<br>Thomson Reuters Tax & Accounting Service Inc.<br>Tower Bank<br>Town North Bank, N.A.<br>TPI Inc.<br>Travelers Foundation<br>Treasury Wine Estates<br>Triangle Community Foundation Inc.<br>Harry D. Triantafyllou Trust Fund<br>Trinity Regional Health System<br>TriWest Healthcare Alliance<br>Mr. and Mrs. Bobby and Phoebe Tudor<br>Tudor Pickering Holt & Co.<br>Tulane Medical Center<br>Tyco (ADT) Employee Matching Gift (MG)<br>UAB Educational Foundation<br>UAB Medicine<br>UDig Technologies<br>UF & Shands Jacksonville Medical Center, Jacksonville, FL<br>UF & Shands<br>UHA<br>UHC<br>UMass Memorial Medical Center - Heart & Vascular Center of Excellence<br>Unilever United States Foundation<br>Union Pacific Fund<br>United Airlines Employee Giving Program<br>United Illuminating Company<br>United Water Services<br>United Way<br>UnitedHealthcare<br>The University of Chicago Medical Center<br>University of Illinois<br>University of Michigan<br>University of Missouri Columbia<br>University of North Carolina Hospitals<br>University of Wisconsin Hospital and Clinics, Madison, WI<br>University Physicians Health Network<br>Univision Radio<br>Univita<br>Unum<br>Valero Energy Corporation<br>Valero Services Inc.<br>Venice Regional Medical Center, Venice, FL<br>Verizon Wireless<br>Vikaran Solutions<br>Vital Images Inc.<br>Vitas Hospice Services | Daniel Voorhees<br>VT Halter Marine Inc.<br>Charmaine and Dan Warmenhoven<br>William K. Warren Foundation<br>Washington Hospital Healthcare System<br>Watchtell Lipton Rosen & Katz<br>C. Scott and Dorothy E. Watkins Charitable Foundation<br>Watson Clinic<br>Wayne M. Wise Wellness Fund Inc.<br>Webster Bank Financial Corp.<br>Weil Gotschal & Manges LLP<br>Weill Cornell CT Surgery<br>Weill Cornell Neurosurgery<br>Elizabeth Weir<br>Wellmont Health System<br>Wells Fargo Insurance Services USA Inc.<br>Wellstar Health System<br>West Tennessee Healthcare<br>Western Athletic Clubs LLC<br>Western Health Advantage<br>Westmoreland Hospital<br>Wheels Inc.<br>Whirlpool<br>William W. Backus Hospital<br>Williams & Connolly LLP<br>Williams Mullen Clark & Dobbins<br>Willis-Knighton Health System<br>Wilson Sonsini Goodrich & Rosati<br>Wolters Kluwer Health<br>Woodlands North Houston Heart Center<br>WPX Energy Inc.<br>Wuesthoff Health System<br>WVT Communications<br>Yates & Sons Construction<br>Mr. Dennis Yee<br>ZBI Employee Allocated Gift Program<br>Dr. Sanford Ziff<br>Zurich American<br>Zurich Employee Giving Program<br><br><b>\$24,999 - \$10,000</b><br>7-Eleven Stores<br>A.B. Farrington Foundation<br>AAON Inc.<br>AARP<br>AAZPAC Match Program<br>ABC 7 Chicago<br>ABC Financial Services Inc.<br>ABC Home & Commercial Services<br>ABC Professional Tree Service<br>Abilene Regional Medical Center<br>Abilene Teachers Federal Credit Union<br>Abington Memorial Hospital, Abington, PA<br>Abrazo Health Care<br>Acadian Ambulance<br>ACS - A Xerox Company<br>Active Network | The Adam Corporation/Group<br>Adam Family Foundation<br>Donald A. Adam Family Foundation<br>Adams Fairacre Farms<br>Mr. John Adams<br>Adcare Educational Institute Inc.<br>Mr. Richard C. Adkerson<br>Kimberley Adler<br>Admarketing<br>Adobe Systems<br>Adrian Steel Company<br>Advanced Technology Ventures<br>Advantage BMW Clear Lake<br>ADVANTAGE Health Solutions Inc.<br>Adventist Health White Memorial Medical Center<br>Adventist Healthcare<br>Aegis Sciences Corporation<br>Aep Texas Central Company<br>Aernst Fox Law Firm<br>Aetna Inc.<br>Aetna - Jacksonville<br>Drs. Frank Ag and Brenda Dennert<br>AGA Medical Corporation<br>Aggreko<br>Aghorn Energy Inc.<br>Agilent Technologies Inc.<br>AGL Resources<br>AIG Marketing, Inc.<br>AIM Specialty Health<br>Aipno<br>Airmasters<br>Akin Gump Strauss Hauer & Feld LLP<br>Akron Children's Hospital<br>Akron General<br>Akron Life Magazine<br>Alaska Children's Heart Center LLC<br>Albany Medical Center<br>Alberici Constructors<br>Albert Einstein Healthcare Network<br>ALDI Inc.<br>Alexander & Baldwin Inc./A&B Foundation<br>Alexian Brothers Health System<br>The Alkek and Williams Foundation<br>All Around Electric Vehicles/Gaddis & Gaddis<br>Allen Hospital, Waterloo, IA<br>Alliance Shippers Inc.<br>Allstate Employee Giving Program<br>Allstate Insurance<br>Ally Management Inc.<br>Alma Pedretti Charitable Foundation<br>Alpha Natural Resources Services LLC<br>Altec Industries<br>Alyeska Pipeline Service Company | American Airlines<br>American Anesthesiology of North Carolina<br>American Enterprises Group Inc.<br>American Express Foundation<br>Employee Gift Matching Program<br>American Financial<br>American General Life and Accident Insurance Company<br>American General Media<br>American Imaging Management<br>American International Group Inc.<br>American Movie Classic Company<br>American Senior Communities<br>American Structurepoint Inc.<br>American Systems Inc.<br>American Water<br>America's Charities Employee Giving Program<br>Amgen Foundation<br>Amgen USA<br>Amica Mutual Insurance Company<br>Amscot Financial<br>Anadarko Petroleum Corporation<br>Analogic Corporation<br>Anchorage Press<br>Cris E. Anderson<br>Anderson, Howard & Electric<br>Anderson Moore Construction<br>Marc & Laura Andreessen Foundation<br>Anita and Kevan Del Grande<br>Anthem Blue Cross Blue Shield<br>The Anza/Weischelbaum Family<br>Aon Risk Services Inc.<br>Apache Corporation<br>Applied Materials<br>Apriso Corp<br>APS<br>Archer & Greiner PC<br>Arent Fox LLP<br>Argonne National Laboratory<br>Arizona Business Bank<br>Arizona Diamondbacks<br>The Arizona Republic<br>Armstrong Cable<br>Hugh G. Arnold<br>Mr. Manfred Arnold<br>Arnold Worldwide<br>Tony and Staci Arnone<br>Arris<br>Arsat Gestion - Royal Mansour Marrakech<br>Arvest<br>The Ashcroft Law Firm LLC<br>Mr. Norman Asjornson<br>Aspen Dental<br>Mr. and Mrs. Paul Asplundh<br>Associated Financial Group<br>Associates In Nephrology, SC<br>Association of Indian Physicians of Northern Ohio | Assurant<br>AstraZeneca<br>AT&T Missouri<br>Atkins Group<br>Atlanta Gas Light<br>Atlanta Hawks Foundation<br>Attends Health Care Products<br>The Auen Foundation<br>Aurora Health Care<br>Austin Professional Services Inc.<br>Automobile Dealers Association<br>AutoNation<br>Mr. and Mrs. Ron Autrey<br>Avalon Carpet Tile & Flooring Superstores<br>Mr. and Mrs. Frank Avent<br>Avera Heart Hospital of South Dakota<br>Mr. and Mrs. Avinash and Peggy B. Ahuja<br>AVX/KYOCERA Foundation<br>B Sanders<br>B&R Stores<br>Gary and Sherry Babcock<br>Babst Calland Clements & Zomnir PC<br>Bachman Auto Group<br>Steven C. Bagden<br>Bahnik Foundation Inc.<br>Michael and Michelle Bailey<br>Baker & Hostetler LLP<br>Baker Botts LLP<br>Brian Baker<br>Balch & Bingham LLP<br>Balfour Concord<br>The Baltimore Sun<br>Baltimore Sun Media Group<br>Bama Foods Limited Partnership<br>The Bane Foundation<br>Carolyn and Neil Banfield<br>Bank Independent<br>Bank of America - Raleigh<br>Bank of Oklahoma<br>Bank One<br>Bank Plus<br>The Bank of San Antonio<br>BankUnited<br>Bank of Washington<br>Bank of the West<br>Banner Health Denali Center<br>Fairbanks Memorial Hospital<br>Baptist Healthcare Affiliates<br>Baptist Heart Specialist<br>C.R. Bard Foundation Inc.<br>Mr. and Mrs. Jim Barksdale<br>Barnabas Health<br>Barnes & Thornburg LLP<br>Dr. Navin Barot<br>Ms. Nicole A. Barr<br>Bartlett Beck Herman Palenchar & Scott LLP<br>Barton Malow<br>Mr. Tom Basanko and Marie Prentiss<br>Bashas' Family of Stores<br>Ms. Gail Bassin<br>Harold H. Bate Foundation Inc. | Bay Medical Center/Sacred Heart Health System<br>Bayer HealthCare Pharmaceuticals<br>Bayer Properties<br>Bayfront Medical Center, St. Petersburg, FL<br>Baystate Administrative Services Inc.<br>BC International Group<br>BCS Financial Corporation<br>BDO USA LLP<br>Beasley Broadcasting<br>Beaumont Foundation of America<br>Beauty Manufacturing Solutions<br>Beck Group<br>Joanne E. Becker Revocable Trust<br>Beckman Coulter Foundation<br>Becton Dickinson & Company<br>Beebe Medical Center, Lewes, DE<br>Beiersdorf Inc.<br>Belk Inc.<br>Bellamy Rutenberg Copeland<br>Epps Gravely & Bowers PA<br>Belmont University<br>Bender Consulting Services<br>Mr. and Mrs. Doyle and Christine BENEBY<br>Beneficial Financial Group<br>Benefit Cosmetics<br>BenefitMall<br>William Benter<br>Bentley Foundation<br>Berenfield Containers<br>The Janet L. Bergman Family Charitable Fund<br>Berkshire Bank<br>The Berner Charitable and Scholarship Foundation<br>Berry Metal Company<br>Beth Israel Medical Center<br>Big Lots Inc.<br>Bill Barrett Corp.<br>Bill Howe Plumbing Inc.<br>Bi-Lo Charities Inc.<br>Bingham<br>BIOMET 3i<br>BKD LLP<br>Black & Veatch Corporation<br>BlackRock Matching Gift<br>Scott Blackwell<br>Blood Assurance Inc.<br>BlueCross BlueShield<br>BlueCross BlueShield of Arizona<br>BlueCross BlueShield of Detroit<br>BlueCross BlueShield of Georgia<br>BlueCross BlueShield of Rhode Island<br>BlueCross of Idaho<br>BlueCross of Northeastern Pennsylvania<br>BlueShield Cares<br>BlueShield of California<br>BlueLinx Corporation<br>BMC Software | BMW Northwest<br>BMW of Columbia<br>BNY Mellon Community Partnership<br>Boardman Medical Supply<br>Bob Evans Farms Inc.<br>Robert Boblitt Jr.<br>Mr. and Mrs. Dale Bohlka<br>Boldt Company<br>Boldt Construction<br>Bon Secours Baltimore Health System<br>Bon Secours Hospital System<br>Bon Secours St. Francis Health System<br>Bonura Hospitality Group<br>Boone Hospital Center, Columbia, MO<br>Borel Private Bank & Trust Company<br>Boston Children's Hospital<br>Boston Consulting Group<br>The Boston Foundation<br>Boston Medical Center<br>Boston Properties LP<br>Boston Scientific<br>The Mervin Bovaird Foundation<br>Mr. and Mrs. Julian Bowen-Rees<br>Roman J. Bowser<br>BP Amoco Foundation Inc.<br>BP Foundation Inc.<br>BP of Alaska<br>Ms. Sandra Braddock<br>Bradley & Parker Inc.<br>Bradley Arant Boult Cummings LLP<br>Matthew and Leslie Braksick<br>I.J. and Hilda M. Breeden Foundation<br>Brewers Community Foundation Inc.<br>Bridgestone Firestone North American Tire<br>Carlyn and Michael Briggs<br>Jim and Cynthia Briggs<br>Brigham & Women's Hospital<br>Brighton<br>Janet Brill, Ph.D., R.D., L.D.N., C.S.S.D.<br>Christy and Jason Brimhall<br>Brink's Inc.<br>Brittain Resort Management<br>Brookfield Investment Management Inc.<br>Brookhaven Memorial Hospital Medical Center, Patchogue, NY<br>Brown Advisory<br>Brown Foundation Inc.<br>Brown Rudnick<br>Brown Shoe Company<br>Mr. Dan Browning IV<br>BSA Lifestructures Inc.<br>BSCENE Magazine/H3 Media<br>Buckingham, Doolittle & Burroughs LLP<br>Bulkeley Duntion |
|---|--|---|---|--|--|--|

# HEART & STROKE CHAMPIONS

|   |   |  |   |  |   |  |
|---|---|--|---|--|---|--|
| Mrs. Louise Burevitch<br>Ms. Myra Burke<br>Burford's Tree Surgeons Inc.<br>Burnett Company Consolidated Inc.<br>Burnett Staffing Specialists<br>Burns & McDonnell Foundation<br>Denise and Bill Burns<br>Burr & Forman LLP<br>Burt's Bees Inc.<br>Busey Bank<br>Ms. Paula Butler<br>Lance Byrd<br>Lauren Byrd<br>C. Roberson<br>C.T. Hellmuth & Associates Inc.<br>C. J. Apple Inc.<br>CA Technologies<br>The CAC Group Inc.<br>CACI International Inc.<br>Cadence Health<br>Caesars Entertainment<br>Brett and Susan Caine<br>Camden Clark Medical Center<br>Camp Foundation<br>Bill Campbell<br>Mrs. Cheryl and Mr. Stanley Campbell<br>Canebrake Country Club<br>Can-Fer<br>Capella Healthcare Inc.<br>Capella University<br>Capital Federal Bank<br>Capital Health<br>Capital One Bank<br>Capital Region Medical Center<br>Capitol Chevrolet Inc.<br>Capstrat Inc.<br>CapTech Ventures<br>CARBO Ceramics<br>Carbone Auto Group<br>Cardenas Markets Inc.<br>The Cardiac & Vascular Institute<br>Cardiac Diagnostic Associates PC<br>Cardiac, Vascular & Thoracic Surgeons Inc.<br>Cardio ID<br>Cardiology Associates Inc.<br>Cardiovascular Consultants of Kansas<br>Cardiovascular Institute of Northwest Florida<br>Carlton Fields<br>Carnival Cruise Lines<br>Carolina Premium Beverage LLC<br>CarolinaEast Health System<br>Carondelet Health System<br>Carondelet Heart & Vascular Institute (formerly Tucson Heart Hospital)<br>Mr. and Mrs. Don and Linda Carter<br>Amon G. Carter Foundation<br>Evelyn C. Carter Foundation<br>Greg Cartmell and Debbie Martin | Catalina Marketing Charitable Foundation<br>Caterpillar Inc.<br>Catholic Community Foundation<br>Catholic Medical Center<br>Ms. Germaine Cayer<br>Ms. Margaret Cazalot<br>CB Richard Ellis<br>CBE Services Inc.<br>CBS Corp.<br>CCA<br>CCS Medical<br>CDC-Split Bills<br>CDS Global<br>Cecil's Fine Jewelry<br>CEFCU<br>Celestica Corporation<br>The Cellular South Charitable Foundation<br>CEMEX<br>Centennial Bank<br>Centier Bank<br>Central Baptist Hospital, Lexington, KY<br>Central DuPage Hospital, Winfield, IL<br>Central Florida Pathology Associates<br>Central Hudson Gas & Electric Corporation<br>Central Illinois Radiological Associates<br>Central Minnesota Clinics Inc.<br>Central Missouri Cardiology<br>Central NY Labor Management<br>Central Texas Heart Center PLLC<br>Central Trust & Investment<br>CentraState Healthcare Foundation<br>Century 21 Boling & Associates<br>Certilman Balin Adler & Hyman LLP<br>Mr. and Mrs. Louis Ceruzzi<br>CFG Community Bank<br>CGI<br>CH2M Hill Companies Ltd.<br>Chef and Mrs. Richard and Lisa Chamberlain<br>Champlain Valley Physicians<br>Charity Motors<br>Charles Schwab Foundation<br>Charleston Downtown Limos<br>Chartis<br>Château Mouton Rothschild<br>Checksmart Financial Company<br>Chenahis Indian Tribe<br>Chemed Corp.<br>Chemiplastica Inc.<br>CHEP Charitable Foundation Inc.<br>Chesapeake Hospital Authority<br>Yvonne Chichin<br>Chick Schaffner Memorial Heart Golf Classic<br>Chico's FAS Inc.<br>Children's Hospital Colorado<br>Children's Hospital Los Angeles, Los Angeles, CA | Children's Hospital of Wisconsin<br>Children's Mercy Hospitals and Clinics<br>Children's National Medical Center<br>Mr. Nick Chimicles Esq., and Mrs. Kathleen Chimicles<br>Chimicles & Tikellis LLP<br>Chinese Community Healthcare Association<br>Chino Valley Medical Center, Chino, CA<br>Choate Parking Consultants<br>Christiana Care Health System - Center for Heart & Vascular Health<br>CHRISTUS Health<br>CHS Services for St. Francis Hospital<br>The Chun Foundation<br>Jae Chun<br>Fred and Shelly Church<br>Cigna Giving<br>Cigna Healthcare of North Carolina<br>Cincinnati Bengals - NFL Charities<br>The Greater Cincinnati Foundation<br>Cintas<br>Cintas First Aid & Safety, Mason, OH<br>Cisco Systems Inc. - HQ<br>CITGO<br>CITGO Refining & Chemical<br>Citibank<br>Citibank Delaware<br>Citrix Online<br>CJW Medical Center, Richmond, VA<br>Clarcor<br>Clark C.A.R.E.S. Foundation<br>The Clark Construction Group Inc.<br>Clark Patterson Lee<br>The Clayton Family Foundation<br>Clear Channel Radio-San Francisco<br>Cleveland Cavaliers<br>Cleveland County Healthcare System<br>Cleveland HeartLab<br>Cleveland Magazine<br>Cleveland Tennessee Hospital Company<br>Cleveland.com<br>The Clorox Company Foundation<br>Coach<br>Coastal Cardiology Association<br>Coastal Federal Credit Union<br>Coastal Law<br>Coblentz Patch Duffy & Bass LLP<br>Coca-Cola Bottling Company United Inc.<br>Code Red Services LLC<br>Mr. and Mrs. Mark Coe<br>Greg and Laura Coffey | Cogentrix Energy Inc.<br>Mr. David Cohen<br>Mr. Mitch Cohen<br>Meredith Koslow Cohen<br>Coinstar<br>Charles and Joan Coker<br>Mr. and Mrs. Jerry Colangelo<br>Helen Bamberger Colby<br>Charitable Foundation<br>Colgate-Palmolive Company<br>Victoria Collins<br>Colodny Fass Talenfeld Karlinsky Abate & Webb PA<br>Colonial Properties Services Inc.<br>Colonial Savings<br>Colorado Beef Council<br>Colorado Rockies Baseball Club<br>Columbia Bank<br>Columbia College & Graduate School of Medical Sciences<br>Columbia University Medical Center, CT Surgery<br>Columbia University Medical Center, Development<br>Columbia University Medical Center, Division of Cardiology<br>Columbia University Medical Center, Neurological Institute<br>Columbia University Medical Center, Stroke Division<br>Comcast/NBC Universal<br>Commercial Metals Company<br>Community First Credit Union<br>Community Foundation<br>Community Foundation of North Texas<br>Community Foundation of the Ozarks<br>Community Health Charities of Illinois<br>Community Health Charities of Michigan<br>Community Health Charities of NY Inc.<br>Community Health Charities of OK<br>Community Hospital of the Monterey Peninsula - Tyler Heart Institute<br>Community Hospitals of Indiana Inc.<br>Community Memorial Foundation<br>Community Regional Medical Center Fresno<br>Community Trust Bank<br>Compass Group North America<br>Comproducts International<br>CompuNet Inc.<br>Computer Sciences Corp.<br>Computer Services Inc.<br>Computershare Inc.<br>Cone Communications<br>Cone Health<br>ConnellyWorks Inc.<br>Conning | ConocoPhillips Alaska Inc.<br>Conroe Regional Medical<br>Constellation Energy Group<br>Consumer Energy<br>Contego Services Group<br>Continental Airlines Inc.<br>Continuicare<br>Continuum Health Partners Inc.<br>Continuum Rx<br>Conway Medical Center<br>Cook Medical<br>Ms. Melody Cook<br>Cooley Attorneys at Law<br>The Cooper Companies Inc.<br>Cooper Standard Automotive<br>Cooperative Managed Care Services LLC<br>CooperVision<br>Corazon Consulting<br>Ms. Laura Corb<br>Corn Products International<br>Correct Rx Pharmacy Services Inc.<br>Dr. Paul and Karen Corso<br>Costa Fruit & Produce Company<br>Cott Beverages Inc.<br>Cottage Health System<br>Country Club Bank<br>Country Fair White Elephant Inc.<br>Sam and Caryn Covelli<br>Covenant HealthCare<br>Coventry Health Care of Kansas Inc.<br>Coventry Health Care of Nebraska<br>Cowen Construction IV<br>Cox Smith Matthews<br>The Cozen O'Connor Foundation Inc.<br>CPL<br>Crane Masters Inc.<br>The Crean Foundation<br>Creative Artists Agency Foundation<br>Credibility International<br>Will B. Crenshaw<br>Crescent Electric Supply<br>Adam and Mary Criaco<br>Mr. and Mrs. Gary Cribb<br>Mr. Rusty H. Crossland and Ms. Lisa T. Burkhardt<br>Crossmark/CHI Management Group LP<br>Crossroads Hospice<br>Crossroads Hospice Charitable Foundation<br>Crothall Healthcare Inc.<br>Mr. Otis Crowder<br>Crowe Horwath LLP<br>Crutchfield Corporation<br>Crystal Group Inc.<br>Crystal Partners LLC<br>CSX Transportation<br>CTPartners Executive Search LLC<br>Cullen & Dykman LLP<br>Mr. Pat Curler | Cdr. and Mrs. Richard E. and Joan Curtis<br>Cushman & Wakefield<br>Cushman-Bettini Designated<br>AHA Fund<br>Custom Tours Inc.<br>CVS Caremark Charity Classic<br>Cytori Therapeutics<br>Da Vita Total Renal Care Inc.<br>DACA LLC<br>Daily News<br>Dairy Max<br>Danbury Hospital<br>Aaron Daniels and Lisa Dezzutti<br>Wilma Daniels<br>Danis Construction<br>The Danis Foundation<br>Darby Group Companies Inc.<br>Georgia and Gholi Dareshori<br>The Rev. and Mrs. Cress Darwin<br>Roger Davenport<br>Vern and Julie Davenport<br>David Saxe Productions<br>David Yurman<br>Charles D. and Nancy G. Davidson<br>Irene E. & George A. Davis Foundation<br>Mr. and Mrs. Martin and Robin Davis<br>Davis Regional Medical Center<br>Davis Polk & Wardell LLP<br>The John Dawson Foundation<br>DDC Advocacy<br>Esteban De Castro<br>Deaconess Hospital<br>Mr. and Mrs. Chris and Lori Decker<br>Mary Jo Dedomenico<br>DEEM<br>Del Frisco's Restaurant Group<br>Delaware Heart & Vascular<br>Delhaize America Shared Services Group LLC<br>Deloitte & Touche<br>Delta Air Lines Inc.<br>Delta Convenient Care PC<br>Delta Dental of Michigan<br>Delta Dental Plan of Ohio<br>Delta Radiology Associates<br>Delta Solutions & Strategies<br>Deltic Timber Corp.<br>Bo and Elizabeth Dempster<br>Denali Center Fairbanks<br>Memorial Hospital<br>Denali State Bank<br>DeRoyal<br>Deseret Management Corporation<br>Desert European Motorcars Ltd.<br>Desert Medical Imaging<br>Deutsche Bank America Foundation<br>Donald Deutsch<br>Devcon Construction Inc.<br>DevicePharm Inc.<br>Devon Energy Corp. | DPS Hawaii<br>Dickstein Shapiro LLP<br>Digital Realty Trust LP<br>Leah Diersen<br>Diller-Shively Foundation<br>Dilworth Paxson LLP<br>Dixon Hughes Goodman LLP<br>Don Carter & Company LLC<br>Do it Best Corp.<br>DocuLynx Inc.<br>Dodge Jones Foundation<br>Dolese Bros. Company<br>Domino's Pizza<br>Mrs. Susan Doria<br>Mr. and Mrs. Bennett Dorrance<br>Dorsey & Whitney LLP<br>Dover Foundation Inc.<br>Downtown Partners<br>DPR Construction Northern California<br>Driscoll Health System<br>Drury Hotels<br>DST Systems Inc.<br>DTE Energy Foundation<br>DuBois Bryant & Campbell LLP<br>The Dubose Family Foundation<br>Chick Led Duke<br>Slade Led Duke<br>Susan Dunn<br>Mr. W. Dunn<br>Mr. and Mrs. Paul and Alice Duran<br>David and Donna Dutton<br>Dykema Gossett PLLC<br>eMapPA<br>E.I. du Pont de Nemours & Co.<br>East Carolina Anesthesia Associates PLLC<br>East Coast Honda Volkswagen<br>East End Cardiology PC<br>East Valley Tribune<br>EBSCO Industries Inc.<br>George S. & Dolores Dore Eccles Foundation<br>Eckardt Electric Company<br>Eckert Seamans Charitable Foundation Inc.<br>Edelman USA<br>Edgen Murray<br>Edison International Employee Contributions Campaign<br>EDM Management<br>Edward Health Services Corp.<br>Curt and Sandra Edwards<br>Bernard A. Egan Foundation Inc.<br>Eichenberg-Larson Charitable Foundation<br>Eisenhower Medical Center<br>El Latino San Diego<br>El Pomar Foundation<br>Eli's Table<br>Eliza Coffee Memorial Hospital/Shoals Hospital<br>Elizabeth Arden Spas<br>Elliott Davis LLC<br>Gary and Sue Ellis<br>Ellis Medicine |
|---|---|--|---|--|---|--|



## HEART & STROKE CHAMPIONS

|   |   |  |  |   |   |   |
|---|---|--|--|---|---|---|
| William H. Ellsworth Foundation         | Kent Ferguson                                 | Freeport & McMoran Copper-Gold               | Bryan Glazer                                   | Ms. Judy Haddad and Ms. Ann Brown                 | Healthcare Foundation of Highland Park            | Home Depot                                    |
| Elmhurst Memorial Hospital Foundation   | Giovanni Feroce                               | Ralph S. French Charitable Foundation        | Josephine Herbert Gleis Foundation             | H.D. Smith Wholesale Drug Co.                     | Healthcare Management Systems Inc.                | Home Run Inn                                  |
| Mr. and Mrs. Jeff and Patti Embleton    | FHL Bank of Atlanta                           | Fresno Heart & Surgical Hospital             | The Glenn Group                                | H.H. Gregg  | Healthcare Partners Nevada                        | Homsey Cooper Hill & Carson                   |
| Emergency Food Bank                     | Fiat of Tacoma                                | Friedmutter Group                            | Global Impact                                  | H.T. Hayashi Foundation                           | HealthSouth Emerald Coast Rehabilitation Hospital | The Honolulu Advertiser                       |
| Emerson Electric                        | Fidelity Employee Giving Program              | Friends of Heart                             | Global Impact Employee Giving Program          | Hahnemann University Hospital, Philadelphia, PA   | HealthSouth Employee Giving Program               | Horizon Medical Group PC                      |
| Emery Wister Endowed Fund               | Fielden                                       | Froedtert Hospital, Milwaukee, WI            | GM Financial                                   | Christopher Damon Haig                            | HealthSouth - Tempe                               | Mr. and Mrs. Jeff and Ruth Housenbold         |
| Empire BlueCross BlueShield             | Fifth Ave. of LI Realty Associates            | Frontier Communications Corp.                | Robert Goelet Foundation                       | Hall Communications                               | HealthSpring of Alabama                           | Houston Golf Association                      |
| Employers Holdings                      | Findlay Toyota                                | Fross, Zelnick, Lehrman & Zissu PC           | Goldberg Lindsay & Company LLC                 | Hall, Render, Killian, Heath & Lyman PC           | HealthSpring USA LLC                              | Howard Bank                                   |
| EMS Management LLC                      | The Finley Hospital, Dubuque, IA              | Frost National Bank                          | Goldman Sachs & Co., Matching Gift Program     | Hammer Builders Inc.                              | Hearst Integrated Media & Hearst Digital          | LaVerne and Thomas Howell Foundation          |
| Emulex                                  | First American Title Insurance Company        | Fujifilm Diosynth Biotech                    | Good Samaritan Health System                   | George and Mary Josephine Hamman Foundation       | HEB Foods   | HSBC Bank USA                                 |
| Energy BBDO                             | First Citizens Bank                           | Fulton Bank and Fulton Financial Advisors    | Good Shepherd Medical Center, Longview, TX     | Hammond Machine Works                             | Mr. and Mrs. Michael R. Hecomovich                | HTC   |
| Enterprise Products Operating LLC       | First Commonwealth Financial Corporation      | Fundacion La Curacao Para Los Ninos          | Mr. and Mrs. John and Kitty Goodish            | Clarene Hample                                    | Hefren-Tillotson                                  | The Harvey Hubbell Foundation                 |
| Envision Pharmaceutical Services Inc.   | First Giving                                  | Future Electronics                           | Goodrich Foundation                            | Hancock Bank                                      | Heinz North America                               | Mr. and Mrs. William F. and Char Hubble       |
| Epic Systems Corporation                | First Insurance Company of Hawaii             | G. Lopes Construction Inc.                   | Toni Logan Goodrich                            | Handi-Foil  | Jewell Henry                                      | Hudson Valley Cardiology Group                |
| Epocrates Inc.                          | First Interstate Bank                         | Gabriel's Holdings LLP                       | Goodwill Industries of Central Arizona Inc.    | Traci and Tad Hankins                             | Kevin and Tina Henry                              | Hudson Valley Federal Credit Union            |
| Equipment Technology LLC                | First National Trust Bank                     | Gadsden Regional Medical Center, Gadsden, AL | Goodwin Family Memorial Trust                  | Mr. and Mrs. Lee T. Hanley                        | Heraeus Medical Components                        | Donald Hultgren Humax USA Inc.                |
| Eriez Manufacturing Company             | First Source Federal Credit Union             | Galderma Laboratories LP                     | Google   | Mr. and Mrs. Steven and Justine Hanna             | Billie Jo Herberger                               | Hunt & Hunt Ltd.                              |
| Erlanger Health System, Chattanooga, TN | First Tennessee Bank                          | Galesburg Hospital Corp.                     | Google Matching Gifts Program                  | Hanover Hospital                                  | Hercules Technology Growth Capital                | Mr. and Mrs. Ernest C. Hunt                   |
| Esse Health Foundation                  | Fisher Titus Medical Center, Norwalk, OH      | Michael Gallagher                            | Reuben & Mollie Gordon Foundation              | The Hanover Insurance Group                       | Heritage Title Company of Austin Inc.             | Huntington Ingalls Industries                 |
| Estate Jewelers of Grayton              | Fitzgerald & Sons Plumbing Company            | The Galloway Foundation                      | Goshen Hospital                                | HAP   | Heritage Trust Federal Credit Union               | Huntton & Williams                            |
| Estee Lauder                            | Flagler Hospital                              | Garcia Construction Group Inc.               | Government Works                               | Mr. David Harbour                                 | Heritage Valley Health System                     | Huntsville Hospital, Huntsville, AL           |
| Ethan Allen of Richmond                 | Flagship Solutions Group                      | GaREAT                                       | GPO Federal Credit Union                       | The Hardesty Family Foundation                    | Hermanson Corporation                             | Huron Consulting Group Inc.                   |
| The Charles Evans Foundation            | Fleishman-Hillard Inc.                        | Garmin International                         | Grace Fort Worth                               | Linnea Hargraves                                  | Mr. and Mrs. Mike and Tery Hernandez              | Elayne Hurwitz                                |
| Eventbrite                              | Kimberly and Curtis Fleming                   | Scott Garula                                 | Grainger Foundation                            | Harkins Builders Inc.                             | The Paul J. Hewgill Charitable Foundation Inc.    | Husch Blackwell LLP                           |
| Evidox Corp.                            | Ms. Sue Fletcher                              | Gatehouse Media                              | Grand Strand Regional Medical Center           | Harnish Group Inc.                                | Hewlett Packard                                   | Hutcheson Medical Center, Fort Oglethorpe, GA |
| Ralph Evinrude Foundation Inc.          | Flint Hills Resources                         | - About Magazine                             | Grand Wailea                                   | Harris Teeter                                     | HFS Federal Credit Union                          | HY Connect                                    |
| Excel Energy Foundation                 | Flintco Inc.                                  | - The Repository                             | The Grappone Companies                         | Carrye and Abraham S. Hart Fund                   | Hickory Farms                                     | Hyatt Regency Maui Resort & Spa               |
| Matching Program                        | Flip Whitner                                  | - The Independent                            | Rebecca Gray                                   | Hartford Hospital                                 | High Point Regional Health System                 | Mr. Tim Hykes                                 |
| Excellus BlueCross BlueShield           | FloraCulture LLC                              | Gateway EDI                                  | Graycor Industrial Constructors Inc.           | Hartford Steam Boiler Inc.                        | Hill Physicians Medical Group                     | Hy-Vee Inc.                                   |
| Exelis Inc. Financial Resource Center   | Florida Crystals                              | John Gaudin                                  | Great American Insurance Group                 | Bob Hartson and Sabine Wilson                     | Hillcrest Baptist Medical Center                  | IBERIA BANK - New Orleans                     |
| Exelon Business Services                | Florida Gulf Coast University Foundation Inc. | Mrs. Shirley Gavan                           | Great Call                                     | James Haruji and Fumiko Tamura Foundation         | The Hirsch Family Foundation                      | IBM Employee Services Center                  |
| Exelon PECO Energy Company              | Florida Power & Light                         | Gay & Lesbian Fund for Colorado              | Greater Houston Anesthesiology                 | Harvey Orthodontics                               | Hitt  | Ice Miller LLP                                |
| Explorer Pipeline Co                    | Fluor Enterprises Inc.                        | Gay Construction Company                     | Greater Houston Community Foundation           | Fred Hassan                                       | HMSA  | Idaho Beef Council                            |
| Express Employment Professionals        | Flushing Savings Bank                         | Gaylord Opryland Resort and Attractions      | Mr. Sid Greehey                                | Noreen Hassan                                     | Hobbs Charitable Trust, Wells Fargo               | IL Long Construction Company Inc.             |
| Fabricut                                | Foley & Lardner LLP                           | GE Energy                                    | Beverly Greenberg                              | The Hatcher Agency                                | Hobby Lobby Stores Inc. - HQ                      | Patricia Imbisi                               |
| Fairbanks Memorial Hospital Foundation  | Folgers Coffee                                | Geisinger Medical Center, Danville PA        | Greenstar Products Inc.                        | Hatchlings Inc.                                   | Hockey Western New York LLC                       | Jane Inch                                     |
| Faison Cruise and Travel                | Foot Locker Foundation Inc.                   | Generac                                      | Greystone HealthCare Management                | Hatteras Financial Corp.                          | Hoffman Auto Group                                | HFS Federal Credit Union                      |
| Faith Regional Health Services          | The Gertrude C. Ford Foundation Inc.          | General Electric Employee Giving Program     | Mr. Richard Groves                             | Hattiesburg Clinic                                | Hoffman Enterprises                               | Hickory Farms                                 |
| Fallon Community Health Plan            | Ford/Lincoln of Ocala                         | General Health System                        | GSE Dynamics Inc.                              | The Hauber Foundation                             | Mr. and Mrs. Mark and Mitzi Hofmann               | High Point Regional Health System             |
| Family Matters Healthcare               | Forest City Enterprises                       | Genesis Health Ventures Inc.                 | GTECH  | Hausman Family Foundation                         | Hogan Lovells US LLP                              | Highland Capital Management                   |
| Family Medicine of Sayebrook            | Mrs. Marleen Forkas                           | The GEO Group Inc.                           | Guarantee Insurance Company                    | Hawaii Pacific Health                             | Gerald and Diane Holder                           | Highwoods Realty                              |
| Mr. Don Fancher                         | Foundation for a Healthy Kentucky Inc.        | George Foundation                            | Guardian                                       | Hawaian Electric Industries Charitable Foundation | Holland & Knight                                  | Hill Physicians Medical Group                 |
| Judy Fare                               | Marlene and Chris Fowler                      | Georgia-Pacific Financial Management LLC     | Homer & Martha Gudelsky Family Foundation Inc. | William and Sharon Hawkins                        | Holman Automotive Group Inc.                      | Hillcrest Baptist Medical Center              |
| Farella, Braun & Martel LLP             | Fox Rothschild O'Brien & Frankel LLP          | Fredrick Germaine                            | Gulf Coast Cardiothoracic & Vascular Surgeons  | Haynes and Boone LLP                              |   | The Hirsch Family Foundation                  |
| Farmers Insurance Hawaii                | Franciscan St. Francis Health                 | Ms. Jean Gibson                              | Stan and Cyndy Gutkowski                       | Haynsworth Sinkler Boyd PA                        |   | Hitt  |
| FarmLinks LLC                           | Mr. and Mrs. Rob and Patti Franklin           | Mr. and Mrs. Peter and Ann Gilbert           | Guy M. Turner Inc.                             | Mr. and Mrs. Mark and Joanne Hazelwood            |   | Haynes and Boone LLP                          |
| Faulkner BMW/Chevrolet                  | Frederick Memorial Hospital                   | Timothy J. and BJ Gilmore                    | GXS  | Hazelwood School District                         |   | Haynsworth Sinkler Boyd PA                    |
| Fayetteville State University           | Larry Fredricks                               | Mr. and Mrs. J. Ginsbury                     | Dr. Ingrid Haas and Mr. Charlie Van Dyke       | HBO & Company                                     |   | Mr. and Mrs. Mark and Mitzi Hofmann           |
| FBL Financial Group Inc.                | Freedom Boat Club                             | GKN Foundation                               | Mr. Anthony Habib                              | HBO Services                                      |   | Hogan Lovells US LLP                          |
| Fc Facilitator                          | Freedom Forum                                 | GlaxoSmithKline Foundation                   |  | HCBeck Ltd.                                       |   | Holland & Knight                              |
| FDH Enterprises Inc.                    |   |  |  | Health Alliance Medical Plans                     |   | Holman Automotive Group Inc.                  |
| FDLIC                                   |   |  |  | Health Care REIT Inc.                             |   |   |
| Ms. Suzanne Fedder                      |   |  |  | Health New England Inc.                           |   |   |
| Federal Mogul Corp.                     |   |  |  | Healthcare Facilities Development Corporation     |   |   |
| Federated                               |   |  |  |   |   |   |
| FedEx Custom Critical                   |   |  |  |   |   |   |
| Feldman Gale                            |   |  |  |   |   |   |
| Fenwick & West LLP                      |   |  |  |   |   |   |
| Barbara Ferguson                        |   |  |  |   |   |   |

## HEART & STROKE CHAMPIONS

|   |  |   |   |  |  |   |
|---|--|---|---|--|--|---|
| The Investment Counsel Company  | Dr. and Mrs. Charles Jost                      | Kobayashi Group   | The Fred A. Lennon Charitable Trust                       | Managed Care Risk Services                         | Mr. and Mrs. Evan and Becky McCorry                                | Merrill Lynch                                   |
| The Iowa Clinic   | Journal Broadcast Group                        | Koch Logistics  | Lenox Hill Cardiovascular Foundation                      | Management & Network Services LLC                  | McDermott Will & Emery LLP   | Mesirow Financial                               |
| Iowa Home Care  | JPB Partners LLC                               | Mr. and Mrs. Russ and Alice Koesterich                  | Leo Burnett Detroit                                       | Manhattan Associates                               | Mr. Hugh McDonald  | Mesquite Independent School District            |
| Iredell Health System   | JPS Partners Together for Health JSH&A         | Kohlberg, Kravis, Roberts & Co.                         | Levi Strauss & Co.  | Mann Packing Co. Inc.                              | McElroy Specialty Interiors Inc.                                   | Methodist Health System                         |
| Irgens Health Care Facilities Group   | Mr. John Juba                                  | Mr. Gerald Kohlenberger                                 | Mr. Leon Levine   | Manpower International Inc.                        | Ms. Therese McGinnis and Mr. Joe Hebert                            | MetLife   |
| Mr. and Mrs. Bob and Mary Irwin   | JWC/JKH Family Foundation                      | Adam Kohn   | Ms. Janet Levy  | Mansour, Gavin, Gerlack & Manos Co. LPA            | Callie D. McGrath Charitable Foundation                            | The MetroHealth Foundation Inc.                 |
| ITC Holdings Company  | Kadlec Medical Center                          | Vanessa Kolpak Charitable Fund                          | Lewis Goetz & Company Inc.                                | Ms. Rama Mantena                                   | McGuire Woods  | Metro Health Hospital                           |
| J & J Sales & Logistics Company   | The Kahala Hotel and Resort                    | Konami Gaming Inc.                                      | Lewisville Independent School District                    | Joe and Andi Mara                                  | McKenna Long & Aldridge LLP  | The MetroHealth System, Cleveland, OH           |
| J. Brown Jewelers   | Kaiser Foundation Health Plan                  | Koontz McCombs Development LLC                          | Lexus of Englewood  | Marathon Corp./Thomas Jernigan                     | McKenney's Inc.  | Metro Taxi                                      |
| JPMorgan Securities Inc.  | George Kaiser Family Foundation                | Koppers   | LF USA  | Mar-Bal Inc.                                       | Mr. and Mrs. Ty McKinney   | MHBT Inc.                                       |
| Jack Doheny Supplies Inc.   | Kaiser Permanente Hawaii                       | Koret Foundation  | LG&E and KU Services Company                              | The George and Judy Marcus Family Foundation       | McKinsey & Company Inc.  | The Miami Foundation                            |
| Jack K. Newman Golf Classic   | Kaiser Permanente Santa Rosa                   | Korn/Ferry International                                | Mr. and Mrs. Michael and Layne Lieberman-Liebelsan        | Markel Corporation                                 | Mr. and Mrs. Don and Connie McLeod                                 | Michaels Stores Procurement Company Inc.        |
| Jackson Heart Clinic PA   | Kaiser Permanente, Clackamas                   | KPCC-FM 89.3  | LifeNet Health  | Marketing Associates LLC                           | McLeod Regional Medical Center, Florence, SC                       | Michelin North America Inc.                     |
| Jackson Heart Foundation  | Kaiser Permanente, Sacramento                  | KREM TV 2   | Mr. and Mrs. Terrance Lillis                              | Marquis Industries Inc.                            | McM, a Meisenbach company  | Microsoft Cooperative Advertising Account       |
| Jackson Spalding Inc.   | Kaiser Permanente, South Sacramento            | Kritchman Family Foundation Inc.                        | Limited Brands Foundation                                 | Marriott Baltimore Waterfront                      | Robert & Janice McNair Foundation                                  | Microvention                                    |
| Jacksonville Fraternal Order of Police Foundation   | Kaiser Permanente, Harbor City                 | KSAT TV 10 Fox  | Lincoln Property Company                                  | Mars Chocolate                                     | McNichols Company  | Mid-Atlantic Surgical Associates PC             |
| Janssen Pharmaceuticals Inc.  | Kansas City Power & Light Company              | KSTU TV CH 13   | Lindner Center of Hope                                    | Mr. and Mrs. Wallis and DeeDee Marsh               | MDC Richmond American Homes Foundation                             | Mid Hudson Wendico Inc.                         |
| Jarrard Phillips Cate & Hancock   | Kao Brands Company                             | KTVB TV CBS 11  | Linn Energy   | John W. & Jerry E. Marshall Foundation             | MeadWestvaco Corporation   | The Midland Group MidFirst Bank                 |
| Jay Shidler/Shidler College of Business   | Kapi'olani Medical Center for Women & Children | Kvaerner North American Construction Inc.               | Lipscomb University                                       | Marshfield Clinic                                  | MeadImpact Healthcare Systems Inc.                                 | Midlands Choice Inc.                            |
| Jefferson City Medical Group PC   | Karsten Financial LP                           | KVMart Co.  | LitePoint Corp.   | Dr. and Mrs. Al and Tina Martello                  | Medco Employee Giving Fund   | Mid-South Heart Center PC                       |
| Jefferson Health System   | Mr. and Mrs. Bradley and Christen Kaufman      | KVOA TV   | Littler   | Mr. and Mrs. Darrell and Boozie Martin             | Med-Fast Pharmacy/Homecare   | Mr. and Mrs. Chris and Donna Milano             |
| Ms. Elizabeth Jennings and Ms. Carolyn Jennings   | Kaufman Container                              | KVOI-FM 1030  | LLOG Exploration  | The Martin Foundation                              | The Medical Center - Bowling Green, KY                             | Mill Creek Lumber & Supply                      |
| Gladys Jensen   | Kay Bork of Impressions                        | KYTX CBS 19   | Lockton Companies of Colorado                             | Roy Martin   | Medical Center Hospital  | MillerCoors                                     |
| Jewish Communal Fund  | Kaye Scholer LLP                               | L. & J.G. Stickley Inc.                                 | The Lodge & Spa at Brush Creek Ranch                      | Dr. Steve and Ameeta Martin                        | Medical Center Hospital, Odessa, TX                                | Mr. and Mrs. Duane and Barbara Miller           |
| The Jewish Healthcare Foundation of Pittsburgh  | KBFF-FM 95.5                                   | Laborers' International Union of North America          | Lonestar College System                                   | Martin's Point Health Care Inc.                    | Medical City Dallas Hospital, Dallas, TX                           | Miller-Motte Technical College                  |
| Jill S. Schwartz & Associates PA  | KBOI TV-2                                      | Laborers' International Union of North America-TriFunds | Los Robles Hospital and Medical Center, Thousand Oaks, CA | Martin's Super Markets                             | Medical Center Fund of Cincinnati                                  | Mr. and Mrs. Richard Miller                     |
| JLR Anesthesia PA   | Ms. Laura Kellogg                              | Laclede Gas   | LOTH  | Mary Hitchcock Memorial                            | Medical University of South Carolina University Medical Associates | Mills-Peninsula Health Services, Burlingame, CA |
| JLS Environmental Services  | Kellogg's                                      | Ris Lacoste   | Louisiana Lottery   | Mary K. Chapman Foundation                         | Medline  | Minco Inc.                                      |
| JM Family Enterprises Inc.  | Dick and Robin Kelly                           | Laerdal Medical Corp.                                   | Lowenstein Sandler  | Mary Potishman Lard Trust                          | Medrad Inc.  | Miner Enterprises Inc. and Subsidiaries         |
| Joan & Sanford I. Weill Medical College & Graduate School of Medical Sciences of Cornell University | Kennedy Health System                          | Lahey Clinic  | Loyal Order of the Moose 1392                             | Mary Zaborski                                      | Medtronic  | Minges Bottling Group                           |
| John Daugherty Realtors   | Kennewick General Hospital                     | Riea Lainoff  | LP Building Products                                      | Maryland Charity Campaign                          | Medtronic Foundation   | Miracle Mile Shops                              |
| John L. Wortham & Son LP  | Kentucky Hospital Research                     | Lake Health   | LSU Health Sciences Center Foundation                     | Mashkin Family Foundation                          | MEMIC  | Mr. and Mrs. Fred and Fari Mirmiran             |
| Johns Hopkins Bloomberg School of Public Health   | Kentwood                                       | Lake Park High School                                   | Jim and Colleen Ludington                                 | Mass Mutual Financial Group                        | Memorial Health System   | Missouri Cardiovascular Specialists             |
| Johns Hopkins University School of Nursing  | Kernersville Medical Center                    | Lake Region Medical                                     | Luken Holdings Inc.                                       | Massachusetts General Hospital - Vascular Division | Memorial Hospital, York, PA  | Missouri Heart Center                           |
| Johnson & Johnson Consumer Products   | Kerrigan Family Medical Group                  | Lamb and Barnosky LLP                                   | Dr. Lillian Luksis  | Matherly Mechanical Contractors                    | Memorial Stroke Center, Gulfport, MS                               | MITRE Corporation                               |
| Johnson & Johnson Development Corporation   | KETK NBC 56/KFXK Fox 51                        | Operating Account                                       | The Lupin Foundation                                      | Matheson Transfer Company                          | Mercer Health & Benefits LLC                                       | Dr. Pedram Mizani and Jacquelyn Willey Mizani   |
| Johnson & Johnson Employee Funds  | Keystone Mercy Health Plan                     | LAMMICO   | Lusardi Construction Company                              | Mathews & Associates                               | Mercer Human Resource Consulting                                   | MLA Legal LLC                                   |
| Johnson & Johnson Employee Giving Program   | Lillian Khor, M.D.                             | Land O'Lakes Inc.                                       | Lutheran Health Network                                   | Mr. Harold Matzner                                 | Merchant & Gould   | Mocse Credit Union                              |
| Andre Johnson Charitable Foundation   | Mr. and Mrs. Fred and Flora Khosravi           | Landers Auto Group                                      | Mr. Don Lynn and Ms. Colleen Block                        | Jean & William K.H. Mau Foundation                 | Mercy Health System, Janesville, WI                                | Molina Healthcare Inc.                          |
| Johnson Brothers Carolina Distributing  | Kikkoman International Inc.                    | Landis+Gyr  | M&I, a part of BMO Financial Group                        | Maxmara Retail Ltd.                                | Mercy Hospital & Medical Center                                    | Momentive Specialty Chemicals Inc.              |
| Mr. Wilbur Johnson  | King County JATC                               | Lane Powell PC  | Machine Builders and Design Inc.                          | Maxum Petroleum                                    | Mercy Hospital of Portland   | Mondial Assistance                              |
| Jones Apparel Group   | King Soopers City Market                       | William H. Lane   | Mr. and Mrs. Brian and Sally Mackin                       | Maynard Cooper & Gale PC                           | Mercy Iowa City  | Monroe Township Board of Education              |
| Ms. Cynthia Jones   | KINK-FM 101.9                                  | The Lanxess Foundation Inc.                             | MacLaren Jewelers   | Mayo Clinic, Arizona                               | Mercy Medical Center - Des Moines, IA                              | The Moorings Inc.                               |
| Jones Day   | Kinney Drugs Foundation                        | Mr. and Mrs. Timothy Larson                             | Mr. and Mrs. Todd and Diana Maclin                        | Mayo Foundation for Medical                        | Mercy St. Johns  | Morgan Stanley                                  |
| Mr. Edward Jones  | Richard E. & Marianne Kipper Foundation        | Lathrop & Gage  | Duncan and Cindy MacNaughton                              | Frederick W. McCarthy Family Foundation            | Mercy, a Member of Dignity Health                                  | Morgan Stanley Dean Witter                      |
| Jones Lang LaSalle/LaSalle  | The Kirklind Clinic                            | Dr. and Mrs. Nathan Laufer                              | The Madden Family Foundation                              | MCCI Group Holdings LLC                            | Meridian Health  | Morgan Stanley Smith Barney                     |
| Investment Management   | Dr. and Mrs. James and Terry Kirklind          | Toni and Ron Lazenby                                    | Madix Store Fixtures                                      | McClain Sonics                                     | Meridian Surgical Partners   | Ms. Susan Morgan                                |
| Jones, Walker, Waechter, Poltevent, Carrere & Denegre LLP   | KishHealth System                              | Patricia C. Leach                                       | Madonna Rehabilitation Hospital/ Madonna ProActive        | McConnell & Jones                                  | Merit Medical  | Mr. Lewis & Bockus LLP                          |
|   | Kishwaukee Community Hospital                  | Mr. David Lefkowitz                                     | Magellan Midstream Partners LP                            | Mr. and Mrs. William F. McConnell Jr.              |  | Mr. William T. Morgan III                       |
|   | Mr. and Mrs. John and Jill Kispert             | Legacy Health System                                    | Maidenform Inc.   | McCormick & Company Incorporated                   |  | Mr. Delman Mortenson                            |
|   | KKIQ-FM 101.7                                  | Legg Mason  | Mr. and Mrs. Ken and Melissa Mailender                    | Mike and Kelly McCormick                           |  | Deiman Mortenson Charitable Foundation          |
|   | Kleiner Perkins Caufield & Byers               | Lehigh Valley Health Network                            | Brian Maki  |  |  |   |
|   | KLP Corporation                                |   | Makovsky & Company  |  |  |   |
|   | Knoll Furniture                                |   |   |  |  |   |

## HEART & STROKE CHAMPIONS

|   |   |  |  |   |   |   |
|---|---|--|--|---|---|---|
| Morgenthaler Management Corporation               | Dr. and Mrs. Doug and Robin Netz  | Northwestern Mutual Financial Group                | Paris Parker   | Physio-Control Corporation  | ProMedica Heart & Vascular Institutes/Northwest Ohio Cardiology Consultants | Barbara Reyring                             |
| Drs. Jack and Risa Moriarity                      | Neuberger Berman  | Mrs. Estha Nowlin                                  | Nicki and Joe Parisi                                       | Piedmont Medical Center, Rock Hill, SC                                | RGAs Reinsurance  | Reznick Group                               |
| Moritt Hock & Hamroff                             | New Belgium Brewing Co. Inc.  | Nucor Steel Tuscaloosa                             | Mr. Robert Parker  | Pier 1 Services Company   | ProMedica Paramount   | RGS Senior Management Group                 |
| Morley Companies                                  | New Creative Mix Inc.   | Nugget Market                                      | Park Nicollet Health                                       | Pikeville Medical Center  | Provant Health Solutions  | RH Barringer                                |
| Moroch  | New Dominion LLC  | Senator and Mrs. Sam Nunn                          | Park Place Motorcars Dallas                                | Pillsbury Winthrop Shaw Pittman LLP                                   | Provena Mercy Medical Center  | Denis and Carolyn Ribordy                   |
| Morrison & Foerster LLP                           | New Enterprise Associates Inc.  | NuStar Foundation                                  | Park Place Motorcars Fort Worth                            | Pinnacle Health Hospitals, Harrisburg, PA                             | Provena St. Joseph Hospital, Elgin, IL                                      | RichSmith Development                       |
| Morrow-Meadows Corp.                              | New Orleans Saints  | NuStep Inc.  | Parker Drilling  | Pinnacle Ventures LLC   | Providence Health System  | Dr. and Mrs. Gary Rike                      |
| Mica Mosbacher                                    | New Product Protection & Information Services                             | NXC Imaging  | Mr. and Mrs. David and Stacy Parks                         | Pinner Construction Co. Inc.  | Providence Hospitals  | Rite Aid Corporation                        |
| Jeffrey Moses, M.D.                               | New System Support  | NY Presbyterian Hospital                           | Parkview Physicians Group - Fort Wayne Cardiology          | Piper Jaffray & Co.   | Providence Hospitals Heart 2 Heart Golf Tournament                          | The Ritz-Carlton Lodge, Reynolds Plantation |
| Mother Frances Hospital                           | New York Air Brake  | NYU CT Surgery - Galloway                          | Parkway Chevrolet  | Mr. James Pitcock   | Providence Medical Center, Kansas City, KS                                  | River Bend Medical Group                    |
| Motion Industries Inc.                            | New York Central Mutual Fire Insurance Company                            | NYU Dean's Office - Admin                          | Parma Community General Hospital                           | Pixelworks Inc.   | Mr. and Mrs. Conrad and Julie Prusak  | River Region Medical Center                 |
| Motorola  | New York Hospital Queens  | NYU EP - Chintz                                    | Parsons Electric   | Hank and Lisa Plain   | PSE&G   | Riverside Community Hospital, Riverside, CA |
| Mount Nittany Medical Center, State College, PA   | New York Presbyterian Hospital  | NYU Great Neck Medical - Kobren                    | Partners Community Healthcare Inc.                         | Plainfield North High School  | PSEG Foundation   | Riverstone Resources LLC                    |
| Mountain's Edge Master Planned Communities        | New York-Presbyterian Hospital/Weill Cornell Medical Center, New York, NY | Dr. Peter K. O'Brien                               | President Harris Pastides and Mrs. Patricia Moore-Pastides | Planet Gold Clothing Company Inc.                                     | Putnam Investments  | Ms. Jeannine Rivet                          |
| MountainStar Healthcare                           | New York State Laborers' Health & Safety Trust Fund                       | Oakwood Healthcare System                          | Pathology Associates Medical Laboratories LLC              | Plant Construction Company LP   | The Quaker Oats Company   | RMV Construction Inc.                       |
| MPT Operating Partnership                         | New York State LECET  | Obici Healthcare Foundation Inc.                   | Patient First Corporation                                  | Platt Electric Supply   | Quality Systems Inc.  | Mr. and Mrs. William H. Roach               |
| MRC   | New York State Nurses Association   | Oceanic Time Warner Cable Office Environments Inc. | Patrick Daugherty  | The Plymouth Rock Foundation  | The Quandel Group Foundation  | Robert Derector Associates                  |
| Mt. Sinai - Boden                                 | New York State United Teachers  | Ogilvy CommonHealth Worldwide                      | Pav & Broome Diamond Jewelers                              | PNC Charitable Trusts   | Quicken Loans   | Robert Wesleyan College                     |
| Mt. Sinai - CT Surgery                            | NFL   | Okaloosa Cardiology PA                             | Paxterra Solutions Inc.                                    | The PNC Financial Services Group                                      | R.J. & J. Construction Inc.   | Robert Wood Johnson University Hospital     |
| Mt. Sinai - Dean Charney                          | NFUSION Print and Web Design  | Oklahoma Center for Implants and Periodontics      | Payroll People Inc.  | PNC Institutional Investments   | R.R. Donnelley  | Jack and Charlotte Roberts                  |
| Mr. and Mrs. John Mullenholz                      | Nice Pak/PDI  | Old Dominion Security                              | PDG PA   | PNC Wealth Management   | R4YL Inc.   | Mr. Pierce J. Roberts Jr.                   |
| Michael J. Mungo Foundation/Mungo Homes           | Mr. and Mrs. David and Susan Nickell                                      | Omni Media Cleveland Inc.                          | Peace River Regional Medical Center                        | Charles and Eve Pohl  | Racaneli Construction Company Inc.  | Beckie Robertson                            |
| Murfreesboro Medical Clinic, PA                   | Danielle Nicolla  | Omnicares Foundation                               | Dale Peck  | Dr. Dipesh Pokharel   | Radiological Associates of Sacramento                                       | Rochester General Hospital, Rochester, NY   |
| Mr. and Mrs. Derrick and Kim Murphy               | Mike and Jacque Nielson   | OmniSource Southeast                               | Nancy Peckham  | Police & Fire Federal Credit Union                                    | William and Cathy Rafferty  | Rock Barn Golf & Spa                        |
| J.D. Murphy                                       | Nintendo of America Inc.  | Once Upon a Time Foundation                        | Pediatric Associates                                       | Polsinelli Shughart   | Ginni Ragan   | Rockefeller Philanthropy Advisors           |
| Murphy Oil Corp.                                  | Nissan North America  | One Beat CPR                                       | Pediatric Cardiology                                       | Popular Club Plan   | John Randolph Foundation  | Rocket Ball Ltd.                            |
| MUSC Physicians                                   | Ray Nixon   | OneBlood Inc.                                      | The Peierls Foundation                                     | David Porter  | Range Resources Corp.   | Rockwell Collins                            |
| Mr. Mike Mussallem                                | Alan Noack  | O'Neil Consulting Group LLC                        | Pellissippi State Community College                        | Gayle Porter  | Rapp Collins Dallas   | Rockwood Capital LLC                        |
| Mr. and Mrs. Joseph Mutchler                      | David and Noel Nolet  | ONEOK Inc.   | Peppo  | Portfolio Recovery Associates LLC                                     | Dr. Sanjeev and Shelley Ravipudi  | Rocky Mountain Harley-Davidson              |
| MV Transportation                                 | Norman Love Confections   | Oppenheimer Wolff & Donnelly LLP                   | Pepico Employee Giving Program                             | Jim and Beverly Postl   | RBC Capital Markets LLC   | Rodgers Builders Inc.                       |
| MVP Health Plan                                   | Normandy Real Estate  | Orbital Engineering Inc.                           | Perdue Inc.  | Powerco Credit Union Inc.   | Reauid, Morgan & Quinn  | Roemer Oil                                  |
| MWH   | North American Refractories   | ORC Grounds Management Inc.                        | Perella Weinberg Partners LP                               | Poyner Spruill LLP  | The Regina M. Rebhan Family Foundation                                      | Barbara Rogers and Gary Geske               |
| MWV Community Development and Land Management LLC | North Cypress Medical Center  | Ortho-Clinical Diagnostic Systems Inc.             | Perfect 10   | PR Newswire Association LLC   | Reckitt Benckiser   | Rogers Benefit Group                        |
| MyPurpleHeart                                     | North Eastern Asset Recovery Inc.   | Janet and Robert Osborn                            | Performance Auto Group                                     | Prairie Cardiovascular Consultants                                    | Red Diamond Inc.  | John Rogicki                                |
| Myrtle Beach Automotive                           | North Florida Regional Medical Center                                     | Osceola Regional Medical Center                    | Performance Team Freight Systems Inc.                      | Pratt Medical Group Inc.  | Red Racing  | Roma Bank Community Foundation              |
| Nash Finch Company                                | North Memorial, Robbinsdale, MN   | Butch and Andi Oustalet                            | Mr. and Mrs. Harold and Mary Ann Perper                    | Praxair Foundation Inc.   | P.S. Reddy  | Ron Sachs Communications Inc.               |
| Nashville Machine Company                         | North Nassau Cardiology   | Ovations Inc.                                      | Perrigo Company  | Preferred One Administrative Services                                 | Redstone Federal Credit Union   | Ropes & Gray LLP                            |
| National Bank of Commerce                         | North Texas Division Office   | Overlake Hospital Medical Center                   | Perry Ellis International Inc.                             | Premier Healthcare LLC & Southern Indiana Physician Health Foundation | ReedSmith LLP   | Rose Associates Inc.                        |
| National Diagnostic Services                      | NorthCountry Federal Credit Union   | Oxford Commercial P.P.D. Development               | Perry Smith LLP  | The Prentice Foundation   | Reeves-Sain Foundation Inc.   | Rosenfeld Heart Foundation Inc.             |
| National Health Foundation                        | Nebraska Beef Council   | Pace Americas Inc.                                 | Personalized Prevention                                    | Press Ganey Associates Inc.   | Regence BlueShield of Seattle   | Rosalyn Rosenthal                           |
| National Grid                                     | Nebraska Heart Institute & Heart Hospital                                 | Pacific Guardian Life                              | Peter Paige, M.D.  | Preventive Medicine Consulting Services                               | Regina Rebhan Mitchell  | Rota Portrait Design                        |
| Nationwide Children's Hospital                    | Nebraska Securities Inc.  | Pacific Life Foundation                            | Peter Schneider  | PricewaterhouseCoopers LLP  | Regional Hospital of Scranton   | Royal Bank of Canada                        |
| Nationwide Security & Building Services           | NBT Bank  | PacificSource Health Plans                         | Petroleum Development Corporation                          | The Edgar and Elsa Prince Foundation                                  | Regional Medical Center at Memphis  | Royal Credit Union                          |
| Natural Molecular Corp.                           | NBTY Inc.   | Padilla Speer Beardsley PAETEC                     | The Pfizer Foundation                                      | Mr. and Mrs. Ed and Susan Pritchard                                   | Reich & Tang Asset Management LLC   | The Royal Hawaiian Hotel                    |
| Navigant Consulting                               | NCI Information Systems   | Greg and Cindy Page                                | PG&E Corporation Campaign For The Community                | The Private Bank & Trust Company                                      | Reliant Energy Charitable Giving  | RRR Medical Real Estate LLC                 |
| Navy Federal Credit Union                         | Mr. and Mrs. James Neal   | Palm Beach County Bar Association                  | PGT Trucking Inc.  | The Private Bank at Bank of America                                   | Renaissance Charitable Foundation Inc.                                      | Joan and Paul Rubschlager                   |
| NBC Securities Inc.                               | Nebraska Heart Institute & Heart Hospital                                 | Palmetto Health                                    | The Philadelphia Foundation                                | Pro Brand International Inc.  | Renker Family Trust   | Rudolph and Sletten Inc.                    |
| NBT Bank  | Neighborhood Health Plan  | Palos Community Hospital                           | Phillip Hohnstein Family Foundation                        | Professional Hospital Supply Inc.                                     | Reno News & Review  | Rural Metro Corporation                     |
| NBTY Inc.   | Nelnet  | Pan Pacific Plumbing                               | Phoenix Business Journal                                   | Progress Energy Florida   | Research Institute for Hawaii USA   | The Russenberger Foundation                 |
| NCI Information Systems                           | Nemacolin Woodlands Resort  | Pappas Restaurants Inc.                            | Phyllis M. Coors Foundation                                | Progressive Medical Inc.  | The Reschini Group  | R.W. Armstrong                              |
| Mr. and Mrs. James Neal                           | Nemours/Alfred I. duPont Hospital for Children                            | Paradigm Group                                     | Physicians United Plan                                     | Pro-Ject Chemicals Inc.   | ResMed Foundation   | Ryan & Company                              |
| Nebraska Beef Council                             |   | Paradise Ventures Inc.                             |  |   | Restless Africa Safaris   | S & T Foundation                            |
| Nebraska Heart Institute & Heart Hospital         |   | PARC Management                                    |  |   | Reston Hospital Center, Reston, VA  | Dr. Stan Sacon                              |
| Neighborhood Health Plan                          |   | Parent Map   |  |   | Reverse Mortgage Solutions Inc.   | Sacramento Business Journal                 |
| Nelnet  |   |  |  |   | Rexel Holdings USA  | SAFE Credit Union                           |
| Nemacolin Woodlands Resort                        |   |  |  |   |   | Safeguard Scientifics Inc.                  |
| Ms. Betty Nelin                                   |   |  |  |   |   | SAG Development Partners LLC                |
| Nemours/Alfred I. duPont Hospital for Children    |   |  |  |   |   | Sage Products Inc.                          |
|   |   |  |  |   |   | Saint Alphonsus Regional Medical Center     |
|   |   |  |  |   |   | Saint Anthony Medical Center                |



## HEART & STROKE CHAMPIONS

|  |  |  |  |   |   |   |
|--|--|--|--|---|---|---|
| Saint Dionysios                                      | Scripps Health                                   | Smart & Final Charitable Foundation          | St. Luke's Episcopal Health System                 | Sunbelt Rentals & SRE                                 | Thompson & Knight Foundation                    | University Medical Center                       |
| Saint Elizabeth Regional Medical Center, Lincoln, NE | SDG&E  | Foundation                                   | System   | SunGard   | Dr. Barbara Thompson                            | University of California, Davis Health System   |
| Saint Francis Hospital and Health Center             | SeaDream Yacht Club                              | A.O. Smith Foundation                        | St. Luke's Episcopal Hospital                      | Sunlighten  | Thompson Coburn LLP                             | University of California, Irvine Medical Center |
| Saint Francis Medical Center                         | Leo W. Seal Family Foundation                    | Mr. E. Smith                                 | St. Luke's Health System, Boise, ID                | The Sunoco Foundation                                 | Jerry W. Thompson                               | University of California, San Francisco         |
| Saint Louis University                               | SEALCO   | Robb and Karin Smith                         | St. Luke's Hospital at The Vintage                 | Suns Legacy Partners LLC                              | The Walter J. & Holly O. Thomson Foundation     | University of Colorado Hospital                 |
| Saint Mary's Health Care, Grand Rapids, MI           | Searcy Special School                            | Smith Sapp Bookhout Crumpler & Callihan PA   | St. Luke's Regional Medical Center, Sioux City, IA | Superior Air Ground Ambulance Service Inc.            | Thoratec Corporation                            | University of Incarnate Word                    |
| The Saint Paul Foundation                            | The Seattle Foundation                           | SMS Holdings Corporation                     | St. Luke's Roosevelt Hospital Center               | Super One Foods/Miners Inc.                           | Pam Thorstenberg                                | University of Kentucky Chandler Medical Center  |
| Saint Peter's Healthcare System                      | Security Service Federal Credit Union            | Mr. and Mrs. Tim and Sally Snavelly          | St. Luke's University Health Network               | SureWest Communications                               | Three Arch Partners                             | University of Montana                           |
| Saks Fifth Ave, Naples                               | Sedgwick Claims Management Services Inc.         | Snohomish County Sheriff Corrections Bureau  | St. Mary's Good Samaritan Inc.                     | Sutter Health East Bay Region                         | Mark and Deb Thresher                           | University of Pennsylvania                      |
| Salem Automation Inc.                                | Segal Family Foundation                          | Snoqualmie Tribe                             | St. Mary's Health Center                           | Sutter West Bay Hospitals                             | Thrivent Financial for Lutherans                | University of Pennsylvania Health System        |
| Salinas Valley Memorial Health Services              | Seiko Corporation of America                     | The Sobrato Organization                     | St. Mary's Hospital Medical Center, Green Bay, WI  | Mr. and Mrs. Bob Swan                                 | Mr. Irwin Thrope                                | University of Pittsburgh                        |
| Mr. and Mrs. Alan Salzman                            | Sellen   | The Somerville Companies Inc.                | St. Mary's Medical Center, Blue Springs, MO        | Mr. and Mrs. Joe D. and Bobbi Swann                   | Thunderbird Charities                           | University of Rochester Medical Center          |
| Sampson Construction Company                         | Sempra Energy - HQ                               | Susan and John Sobrato                       | St. Tammany Parish Hospital                        | Swarovski North America Ltd.                          | The Tillery Tradition Inc.                      | University of Utah                              |
| Earl C. Sams Foundation Inc.                         | Sempra Energy Foundation                         | SoftLayer Technologies                       | Stadium Management Company LLC                     | Swedish American Hospital                             | Times Community News                            | University of Utah Hospitals and Clinics        |
| Samsung Electronics America Inc.                     | Senior Star Services LLC                         | Solstice Benefits Inc.                       | Henry Staley                                       | Swinerton Builders                                    | Times Supermarket Ltd.                          | University of Washington                        |
| Samuel Goldberg & Sons Foundation Inc.               | Sentara Healthcare                               | Sonoco Foundation                            | Stallion Oilfield Holdings                         | SWS Charitable Foundation Inc.                        | Tire Kingdom                                    | University Physicians Inc.                      |
| San Angelo Community Medical Center                  | Sentient Jet                                     | Source Interlink Companies                   | Standard Beverage Corporation                      | Sysco Corporation                                     | Tony's Fine Foods                               | UP Corporation                                  |
| The San Diego Foundation                             | Seyfarth Shaw LLP                                | South Carolina Heart Center                  | Standard Drywall Inc.                              | Sysco Dallas Inc.                                     | Tornier Inc.                                    | UPMC Horizon, Farrell, PA                       |
| Saks Fifth Ave, Naples                               | Shannon Medical Center, San Angelo, TX           | Southcoast Hospital Group                    | Stanford Hospital & Clinics                        | Mr. and Mrs. Chuck Sykes                              | Toshiba Business Solutions Florida              | UPMC Life Changing Medicine                     |
| San Joaquin Community Hospital, Bakersfield, CA      | Shanska USA Building Inc.                        | Southeast Dodge Truck                        | Starwood Hotels & Resorts Worldwide Inc.           | Tabbali Grill   | Townsquare Media                                | UPMC Passavant, Pittsburgh, PA                  |
| San Jose Business Journal                            | Mr. and Mrs. Lee Shapiro                         | Southern Community Bank & Trust              | State Farm Insurance                               | Tallahassee Memorial HealthCare, Tallahassee, FL      | Toyota Dealer Match Program                     | Upper Chesapeake Medical Center                 |
| San Ramon Regional Medical Center, San Ramon, CA     | Sharon Regional Health System, Sharon, PA        | The Southern Connecticut Gas Company         | State Farm Mutual Automobile Insurance Company     | Tammy Johnson   | Transamerica Foundation                         | UPS Freight                                     |
| Mr. and Mrs. Richard and Anne Sanquini               | Shasta Regional Medical Center Diane Shaw        | Southern Illinois University Foundation      | State Street Foundation                            | Tampa Bay Rays  | Travelers                                       | US Bank   |
| Sansum Clinic  | Shaw Pipeline Services                           | Southern Illinois Healthcare                 | State Farm Mutual Automobile Insurance Company     | The Tampa Tribune                                     | Trinity Mother Frances Health System, Tyler, TX | US Charitable Gift Trust                        |
| Santa Barbara News-Press                             | Shaw Power Group                                 | Southern Wine & Spirits                      | State Farm Mutual Automobile Insurance Company     | Tanana Valley Clinic                                  | Troutman Sanders LLP                            | USA Bouquet                                     |
| Santa M. Sasena                                      | Shell Oil Company                                | Southwest General Hospital                   | State Farm Mutual Automobile Insurance Company     | Targa Resources                                       | Mr. and Mrs. Kenny Troutt                       | USA Consulting Inc.                             |
| Sara Lee Corp.                                       | Shimer   | Ms. Debbie Southworth                        | State Farm Mutual Automobile Insurance Company     | T.D. Williamson Inc.                                  | Truly Nolen of America Inc.                     | USA Drug Foundation                             |
| SASCO  | Mr. and Mrs. Dan and Diane Shimer                | James Sowell                                 | State Farm Mutual Automobile Insurance Company     | TD Ameritrade Inc.                                    | Trustus Federal Credit Union                    | USF Health                                      |
| Rod and Kim Satterwhite                              | Mr. and Mrs. Sanford Shkolnik                    | Ms. Marjorie Sparks                          | State Farm Mutual Automobile Insurance Company     | Tech Mahindra (Americas) Inc.                         | Tube City IMS                                   | USM Inc.  |
| Savannah River Nuclear Solutions                     | Shook, Hardy & Bacon LLP                         | Ms. Steve Sparks                             | State Farm Mutual Automobile Insurance Company     | Technicolor USA Inc.                                  | Tucker Arensburg PC                             | USPI  |
| Scalzo, Zogby & Wittig Inc.                          | Shore Medical Center                             | Special Distribution Center                  | State Farm Mutual Automobile Insurance Company     | Teledyne Brown Engineering                            | Tulsa Community Foundation                      | U-T San Diego                                   |
| Matthew and Martina Scanlan                          | Showmars Advertising Account                     | Spectra Energy Foundation                    | State Farm Mutual Automobile Insurance Company     | Telefutura KDTF 36                                    | Tulsa World Publishing Company                  | UT Southwestern - St. Paul                      |
| Scentsy Inc.   | Shrewsbury & Associates LLC                      | Spectranetics                                | State Farm Mutual Automobile Insurance Company     | Telos Fitness Foundation                              | Tupperware                                      | Utility Fleet Sales                             |
| Leah Schaefer  | Shumaker, Loop & Kendrick LLP                    | Alfred and Dorothy Spigarelli                | State Farm Mutual Automobile Insurance Company     | Temple Hoyne Buell Foundation                         | Mr. and Mrs. Darby and Charlotte Turner         | Valentine Stores Inc.                           |
| Schiff Nutrition                                     | Lisa Shuster                                     | Mr. and Mrs. David and Debra Spreng          | State Farm Mutual Automobile Insurance Company     | Temple University Health System                       | Tab Turner                                      | Valerie Wilson Travel Inc.                      |
| Mr. and Mrs. Mark Schimansky                         | Shutts & Bowen LLP                               | Squire, Sanders & Dempsey LLP                | State Farm Mutual Automobile Insurance Company     | Mark Templeton  | Mr. Glennray Tutor                              | Valley Wide Beverage Company/Amendola Family    |
| David L. Schlotterbeck                               | Sibley Heart Center Cardiology                   | Linda Squires                                | State Farm Mutual Automobile Insurance Company     | Tenet Healthcare System                               | Tyler Today Magazine                            | ValleyCare Health System                        |
| Schlumberger   | Nancy and Kevin Sidow                            | SRP Federal Credit Union                     | State Farm Mutual Automobile Insurance Company     | Mr. and Mrs. Eric Termansen                           | Alexei Tylevich                                 | Vanguard Health Systems                         |
| Schnader Harrison Segal & Lewis LLP                  | The Siemens Philanthropic Fund                   | SSAB North American Foundation               | State Farm Mutual Automobile Insurance Company     | Terumo  | Tyson Foods Inc.                                | Vantage Health Plan                             |
| Schneider Electric Employee Giving Program           | Signal International LLC                         | SSM Health Care of Oklahoma                  | State Farm Mutual Automobile Insurance Company     | Tesoro Petroleum Companies Inc.                       | U.S. Airways                                    | Vastech - DBA Cardio ID                         |
| Schnuck Markets Inc.                                 | Signature Brands                                 | St. Anthony Medical Center                   | State Farm Mutual Automobile Insurance Company     | TETRA   | U.S. Matching Gift Program                      | Mr. Shrikant Vaze                               |
| Jean Schulz  | The William & Sylvia Silberstein Foundation Inc. | St. Bernardine Medical Center                | State Farm Mutual Automobile Insurance Company     | Texas Bank and Trust                                  | UGL Services Equis Operations Company           | VEC Inc.  |
| Schumacher Group                                     | Silicon Image                                    | St. Clair Hospital                           | State Farm Mutual Automobile Insurance Company     | Texas Capital Bank                                    | UHS of Delaware Inc.                            | Kathryn C. Vercellio                            |
| Douglas Schumann                                     | Silver Lining Inflight Catering Inc.             | St. Cloud Hospital Centra Care Health System | State Farm Mutual Automobile Insurance Company     | Texas Health Resources                                | Ulico Insurance Group                           | Vedder Price PC                                 |
| Mr. and Mrs. Philip Schwab                           | The Slomo and Cindy Silvan Foundation Inc.       | St. David's Medical Center, Austin, TX       | State Farm Mutual Automobile Insurance Company     | Presbyterian Dallas                                   | UMC Health System                               | Velma Alma Elementary                           |
| Schwaebischer Saengerbund Inc.                       | Simco Management Corp.                           | St. Elizabeth Medical Center                 | State Farm Mutual Automobile Insurance Company     | Texas Instruments Inc.                                | Union Bank & Trust Company                      | Venable Foundation                              |
| Schwarzschild Jewelers                               | Russell Simmons                                  | St. Francis Hospital                         | State Farm Mutual Automobile Insurance Company     | Texas Tech University Health Sciences Center, Lubbock | United Mechanical Construction                  | Venable LLP                                     |
| SCI Funeral & Cemetery Purchasing                    | Bruce and Stacy Simon                            | St. Francis Medical Center                   | State Farm Mutual Automobile Insurance Company     | Texile Corp.  | United States Marine Inc.                       | Verizon Foundation                              |
| Scitent Inc.   | David and Amie Simpson                           | St. John's Hospital & Medical Center         | State Farm Mutual Automobile Insurance Company     | Tex-Isle Supply Inc.                                  | United Surgical Partners International          | Versant Ventures                                |
| Scott & White Healthcare                             | Simpson, Thacher & Bartlett LLP                  | St. Joseph Health Medical Center, Bryan, TX  | State Farm Mutual Automobile Insurance Company     | Texoma Health Foundation                              | United Way of Greater Milwaukee Inc.            | VF Sportswear Inc.                              |
| Mr. Bert Scott                                       | Sitel Corp.                                      | St. Joseph Medical Center                    | State Farm Mutual Automobile Insurance Company     | Mr. Chet Thacker and Julie Dobson                     | United Way of Greater Milwaukee Inc.            | Acie Vickers                                    |
| Scottsdale Insurance/Nationwide Foundation           | Six Disciplines LLC                              | St. John's Hospital & Medical Center         | State Farm Mutual Automobile Insurance Company     | Mr. and Mrs. Mel and Erica Thaler                     | United Way of Tarrant County                    | Jody Victor                                     |
|  | Skadden Arps Slate Meagher & Flom LLP            | St. Joseph's Cornwall Hospital               | State Farm Mutual Automobile Insurance Company     | Emmitt Thames   | University Air Center                           | Villas by Linda Smith                           |
|  | Diana and Jim Skogsbergh                         |  | State Farm Mutual Automobile Insurance Company     | Therno Fisher-Scientific                              | The University of Arkansas Foundation           | Vinson & Elkins                                 |
|  | Skye Hospitality LLC                             |  | State Farm Mutual Automobile Insurance Company     | Think Mutual Bank                                     | University Cardiothoracic Surgical Associates   | Virginia College LLC                            |
|  | Slidell Memorial Hospital, Slidell, LA           |  | State Farm Mutual Automobile Insurance Company     | Thomas Jefferson University                           | University Health Systems                       | Virginia Mason Team Medicine                    |
|  | SM Energy Matching Gift                          |  | State Farm Mutual Automobile Insurance Company     | Cardiology Research Foundation                        |   | Virginia Port Authority                         |
|  |  |  | State Farm Mutual Automobile Insurance Company     | ThomasARTS Inc.                                       |   | Virtua  |

# HEART & STROKE CHAMPIONS/PAUL DUDLEY WHITE LEGACY SOCIETY

Visa USA Inc.  
Vista Health System  
Vitruvian Exploration LLC  
Dr. Annabelle Volgman and Mr. Keith Volgman  
Volkswagen Group of America Inc.  
Chef Scott Vosburgh  
W & W Steel LLC - General Account  
W.L. Gore & Associates  
W.R. Grace & Co.  
Waco Cardiology Associates  
Wadell & Reed Inc.  
Wadley Regional Medical Center, Texarkana, TX  
Ms. Crystelle Waggoner  
WakeMed  
Walden University  
Christina Waldorfer  
Walgreens Company  
Walgreens Family of Companies  
Mr. Brett Wall  
Mr. Timothy Wallace  
Walmart Distribution Center 7016  
Walmart Jewelry Distribution Center  
The Walser Foundation  
Walsh Construction  
Walt Disney World Resorts  
Warburg Pincus LLC  
Michael and Kim Ward  
Ware Foundation  
The Warner Foundation  
Warren Fabricating Corp.  
The Warren Family Foundation  
Washington Gas Light Company  
Washington Post Media  
Washington Trust Bank  
Watkins & Eager PLLC  
Watson Wyatt  
We Energies  
Weaver & Tidwell  
Weill Cornell Medical College  
John L. & Sue Ann Weinberg Foundation  
Mr. and Mrs. Michael and Caren Weinberg  
Weingarten Realty Investors  
Weis Markets Inc.  
Welch Allyn  
Welch's  
Wells Enterprises Inc.  
Wells Fargo Community Support  
Wells Fargo Insurance Inc.  
WellSpan Health, York, PA  
Wesley Medical Center  
West Interactive Corp.  
Westchester General Hospital  
Western Extrusions  
Western Refining  
Western Regional Medical Center  
Westinghouse Electric Company LLC  
Mr. Graham Weston

Westside Regional Medical Center  
Frederick and Margaret L. Weyerhaeuser Foundation  
WFB Ohio - Foundation (MN)  
WHA Medical Clinic PLLC  
Whelan Foundation Inc.  
Mr. Mark White  
White Wave Foods  
Whitsons Food Service Corp.  
Whole Foods Market  
WildHorse Resources LLC  
Williams-Hayward Protective Coatings  
Mr. and Mrs. Karl and Jennifer Williams  
Kathleen Wilsey  
Wilson Homecare  
Wilton Industries Inc.  
Windstream  
Winstead Civic Trust  
Winter Park Health Foundation  
Winthrop University Hospital  
Wischmeyer Benefit Partners  
Wisconsin Physicians Service  
Wittigs Office Interiors  
WLIT-FM  
Tim and Cindy Wollaeger  
Melvin and Ruth Wolzinger  
Womble Carlyle Sandridge & Rice  
Wonderland Pier Gilamco Inc.  
Woodings Industrial Corporation  
Woodlands Wellness & Cosmetic Center  
Woodmeister Master Builders  
Woodson Charitable Trust  
Workday Inc.  
World Wide Technology Foundation  
WPS Bank  
Wright Tree Service Inc.  
Wymar Federal Credit Union  
Xcoal Energy & Resources  
XL Global Services  
xpedx National Shared Services Center  
The Yates Companies Inc.  
YMCA of the Triangle Area  
Yogurt Mountain  
Young Family Foundation Inc.  
Youngstown Ohio Hospital Company LLC  
Ms. Kari Yunker  
Zachry Holdings Inc.  
Ziegler Inc.  
John Zehnder  
Mr. and Mrs. Barry Zemel  
Mr. Eric Ziebold  
Zions Management Services Company  
Zoll Lifevest Corp.  
Zonare  
Mrs. Anita Zucker  
Zurich

## Paul Dudley White Legacy Society

*In recognition of revocable and irrevocable planned gifts, this society is named for a founding member and early president of our organization. Paul Dudley White's efforts to improve the quality of patient care earned him the legacy of "Father of American Cardiology."*

**A**  
In memory of Fannie L. Abernathy and daughter, Ida Belle Abernathy Loper  
Mr. and Mrs. John Adams  
Lawrence N. Adler, M.D.  
Edward and Ruth Adrian  
Mr. Walter Ahrens  
Mr. Andy and Dr. Andrea Ai  
Beatrice Akers  
Marc and Darlene Albertson  
Mr. George Albrecht  
Louis R. Albrecht  
Mrs. Frances Allan  
Mr. Allen  
Cheryl Allen  
Dr. and Mrs. Hugh D. Allen  
Mrs. Louise Allison  
Ann Marie and Bob Alonso  
Ms. Pamela Alton  
Richard Alvarado  
Ms. Marilyn Ambler  
Salvatore Amendola  
In loving memory of Doris B. Anderegg from her husband  
Dorothy Anderson  
Mr. and Mrs. Vernon Anderson  
William and Bertha Andrew  
Mr. and Mrs. James S. Andrews  
Mr. Mike Andry  
Dr. Margarite M. Angelopoulos  
Mr. and Mrs. Walter Anthony  
Lynn and Julia Archer  
Linda D. Arida  
Sara Armstrong  
Mr. and Mrs. Ronald Aspey  
J. Brian Augustine  
Mr. Patrick M. Ausmus  
Dr. and Mrs. Saul Axelroad

**B**  
Robert C. Bahler, M.D.  
Mr. and Mrs. Robert Bahman  
Weslie Baird  
Roger and Angela Baker  
Viki Baker  
In memory of Charles Solomon Rosenkranz by Ed and Linda Balch  
Dr. Edgar Balcueva

Mr. and Mrs. Murray Baldwin  
Mrs. Lucile Ballard  
Mrs. Florence M. Banny  
Mr. Roger L. Banzhaf  
Miss Patricia Barabash, in loving memory of my parents, John and Olga Barabash and brother, Gary Barabash  
Robert J. Barberio Family  
Edward Bardgett  
Rudy Barela  
Dr. and Mrs. Bryan Barksdale  
Mildred Barnes  
Mr. Raymond Barnes  
Walt and Kay Barnes  
Catherine Barr  
Buddy and Coletta Barrett  
Arlene Barst  
Helaine R. Baruch  
Mr. and Mrs. Scott Bates  
Robert L. Bates  
William and Lugena Batts  
James Bauer  
In memory of Morgan A. Bauer and Larry Bauer  
Brenda Baxter  
Sharon Bean  
Karen Beatty  
Karen L. Beatty  
Mr. Jack W. Beech and Mr. Dan S. Wari  
Evelyn Beekman  
Mrs. Ralph Beers  
Mr. Peter Behr  
In memory and honor of Mr. Benoyd Hunt Bell, Sr.  
Thomas Bell  
Barry W. Bennett  
Ms. Ramona A. Berger  
Ms. Judith Bernard  
Ms. Dolly Bernstein  
Amy K. Bertholf  
Herman Best  
Betty Bevers  
Mr. Donald J. Beyette  
Mr. Mike Bezanson  
Sharon Mahmood Bhaimia  
Brian and Iris Bich  
Dr. and Mrs. John G. Bielawski  
In loving memory of Lee S. Bielski, her husband Cass  
Robert J. Bierly  
Paul Billingsley  
In loving memory of Howard Bingham from his son, David  
Steve and Kim Binkley  
William and Patricia Bisignano  
Richard A. Blakely, Esq.  
Mr. and Mrs. John Bleistein  
Alvin H. Blitz, Esq.  
Diana Block  
Adele D. Bockstedt  
Mrs. Shirley F. Carliner  
Tish Carlo  
Joan Noto Carro, R.N.  
Ms. Grace Carter  
Mr. James M. Caruthers

Connie M. Bootz  
Christina Bores  
Ms. Thea Bossart  
Jonathan and Lisa Bowen in memory of Garrett Terrell  
Mr. and Mrs. Taylor Bowen  
Ben and Ellen Bower  
Ms. Tara Bowley  
Mr. David Boyes  
Mrs. Edna L. Boykin  
John E. Boytim  
Mary and David Bradstreet  
Harlan Breininger  
John and Susan Brennan  
Mrs. Kathleen Brennan  
Mrs. Ruth D. Bressler  
Mr. and Mrs. Dennis Bretherick  
Alan Glenn Brice  
Ms. Darlene Brickmann  
Mr. and Mrs. Henry Brinkmann  
In memory of Frank Broday  
Doris Broder  
Vincent K. Brofka Jr., in honor of Joan R. Brofka  
Ms. Sue Bromley  
William R.H. Broome  
Norma J. Brothers  
Alice Brown  
Carolyn Brown  
Mr. Charles J. Brown  
David and Melissa Brown in loving memory of daughter Madelynn Brown  
Mrs. June R. Brown  
Gary and Nancy Brown  
Marty B. Bruder, in loving memory of his mother Lillian Bruder  
Mr. and Mrs. Anthony Bruno  
In memory of Veronica Brustman  
Ms. Ruth Bruton  
Ms. Margaret Brynild  
Lynne Bryson  
Mrs. Marie Buchanan  
William H. Bunn Jr., M.D.  
Otis and Fern Burdine  
Ed and Lorraine Burgard  
Joseph and Vilma Burgess  
Mr. Bob Burn  
Andrew Buroker  
Mr. and Mrs. Gary M. Busch  
Sandra Busell, Esq.  
David A. Bush  
Mr. and Mrs. Benjamin Bussey  
In memory of Margaret A. Butler

**C**  
Kim and Toni Cady  
Ms. Mitanette Calvin  
In memory of Lillie G. Cameron and Stephanie L. Cameron  
Terri Campanelli  
Mrs. Shirley F. Carliner  
Tish Carlo  
Joan Noto Carro, R.N.  
Ms. Grace Carter  
Mr. James M. Caruthers

Mrs. Susan F. Caruthers  
John and Anita Casazza  
James and Kitty Casseday  
Mrs. Janice Cauthen  
Joy H. Chaillou  
Dr. Lorraine Chanatry  
Ann and George B. Chapman  
Ken and Suzette Chapman  
Mrs. Olga Charbonneau  
Mrs. Ruth J. Chinowth  
George E. and Helen J. Christensen  
Eric and Laurie Christensen  
In memory of my mother, Doris Gray, her loving daughter, Portia A. Christian  
Sheldon Chrysler, in memory of his twin brother, Barry Chrysler  
Tom and Michele Clancy  
Dorothy Clark in memory of Jack Hanagriff and Don Clark  
Nancy L. Clark  
Mrs. Mary Clarke  
Arnold and Frances Coffman  
Joseph and Dorothy I. Cohen  
Mr. Richard B. Cohen, CPA  
Mrs. Darlene P. Collette  
Cecil A. Collings Family Trust  
Midge Compton  
Vanessa Conant  
Sanford A. Cone  
Mrs. Leatrice Conner  
Sheila Connors  
Janet Connors  
Ms. Noreen Conroy  
Mr. and Mrs. Craig Cook  
Willie H. and Larilee Cook Jr. Fund  
Louise Cook  
In memory of Walter Cook II  
Mrs. Irene Cooney  
Lisa Cooper  
Mrs. Winifred B. Corbett  
Richard Cosmano  
Alma Heath Costello  
C. Anne Coulter  
Brenda Cox  
Harold and Frances Cox  
Mr. and Mrs. Raymond Cox  
Anthony J. and Mary Cozzi  
Mark Cozzi  
Susan Cramer  
Danny and Brenda Crawford  
Ms. Anne Crews  
Cynthia Crisler  
Mr. and Mrs. John B. Crosby  
Florence Cubic  
Ms. Arlene Cumberland  
Arlene J. Curtis  
Donald M. Cusick

**D**  
Ret. Lt. Col. E.L. Daniell in loving memory of my wife, Elizabeth K. Daniell  
George and Marion Darr

Ron and Sunny David  
In memory of Mr. and Mrs. Charles V. Davis  
Charles W. Davis  
Christine and William Davis  
Paul and Nancy Davis  
Rick Davis  
Valery Davis  
Mrs. Hermé de Wyman Miro  
Ms. Ruth E. Deacon  
Mary R. DeFalice and Family  
Sheryl Denny  
Walter and Margaret DeSelle  
Marie Joan DeStefano  
Joe and Betty Devore  
Mary DeWire and Family  
Sandra Dial  
Ms. Maria K. Dick  
Albert and Sarah Dillon  
Bonnie L. Dixon  
Richard T. and Debbie A. Dixon  
Mr. Allyn C. Donaldson Jr.  
Beverly Donaldson  
Rose S. Doner Memorial Stroke Research Fund  
Michael Donovan and Family  
Sue Ann Goetz Doody  
Dr. Lamont L. Dozier Sr.  
Joan Dransfield in loving memory of my husband, Larry Y. Dransfield  
Donald H. and Janet M. Drayer  
Janet L. Dreyer  
Faye Druckenniller  
Jacqueline Dubelle  
Kathy Duplantis  
Mr. Arthur Dusdall  
Mr. Bruce L. Dusenberry  
Dr. Jerome V. Dwyer  
W. William and Mary Scheller  
Dyrkacz  
Catherine and Dennis Dysarz

**E**  
Chris East and Family  
Suanne and Jerry Eatman  
Lorraine "Lorie" M. Ebert  
Dr. Richard and Ann Edelson and granddaughter Rayah  
Josh and Dori Eden  
Mr. and Mrs. David Edwards  
Jim and Ellen Edwards  
Joy DuRae Eicher  
E. Marsha Elixson, R.N.  
Mrs. Bobbie Elle  
Carmen Ellington  
Mr. Clayton Elliot  
John and Sarah Elliott  
Penny M. Ellis  
Robert A. Ellis  
Joan Emerick  
Marie S. Emmerman  
In honor of William Mark Emmons and Clyde Emmons  
Mrs. Kathryn O. Engel  
Ms. Barbara L. Ennis  
Ms. Mary Enslow



## PAUL DUDLEY WHITE LEGACY SOCIETY

Alonza and Helen Epps  
Mr. William "Jack" Epps  
Midge LaPorte Epstein  
Norvin and Candas Erickson  
Mr. Frederick Ernst  
Mrs. Jimmie Esmen  
Gina Marie Esparza  
Jeanine T. Eubank

### F

Louis G. Fabian  
Marjorie A. Falvey  
Mr. and Mrs. William J. Farrell  
Mr. and Mrs. Buddy Farrington  
Richard T. and Elaine Fattibene  
Roger Favorite  
Mrs. Sonia Feiertag  
Samuel Feldman  
Kathy Fenelon  
Donald J. Fenlason  
Aeron "Sam" Fidler-Warren  
Virginia Field  
Helen E. Fink  
Mrs. Wilma S. Firsich  
Grace M. Fischer, M.D.  
Stephen Fischer  
Dr. and Mrs. Terrance N. Fisher  
In memory of Vernon B. and  
Clara M. Fitzhugh  
Helene and Harold Fitzsimmons  
Denny A. Fletcher  
Ms. Tohbi Flippin  
Richard and Joanne Foat  
Allene Dow Fodor  
In memory of my grandfather Ray  
Forney, my uncle Gordon  
Forney and my father-in-  
law, Clyde Chandler  
Ms. Lorraine Fox  
Donald J. Franczak  
Margaret S. Franczak  
Margaret I. Frankenberry  
Dominick Franzese  
Karen Frazier  
Mr. William S. Frazier  
Charles W. Frederick  
Donna and Charles Freeman  
Florence and Barry Friedberg  
Margaret D. Froome  
Joyce Fullbright  
Dr. Richard E. Fulton  
Andrew M. Fussner

### G

Bernie and Ellie Galinski  
Roger and Barbara Gardner  
Terrence L. and Norma Jean  
Gast Trust  
Mrs. Anna J. Gates  
Paul and Gladys Gaydosh  
Eugene and Cecile Geaslin  
Mr. and Mrs. Harold Gebele  
Helen M. Gerde  
Helen I. German  
Irma Feld Getz, in memory of  
Saul Feld and David Feld  
Mr. and Mrs. Dayton D. Gilbert

Mrs. Iris Gilbert  
Leila P. Gilbert  
Ms. Elaine Gilhouser  
Rick Gilliam  
Ms. Michele Lynn Gilman  
Donald S. Gingrich  
In memory of Otto W. Glade  
Marie Godlewski  
Edgar and Helen Goebel  
Mr. and Mrs. Hossein Golabchi  
Ms. Davida J. Goldberg  
Debbie Goldberg  
Diane F. Goldberg  
Alan Goldfarb  
In loving memory of Robert  
Goodell, by his wife Jane  
Doris Goodman, M.D.  
Dr. Donald J. Gordon  
Mr. Ron Gordon  
Dr. Seymour Gordon  
Mrs. Victory Goya  
Marie L. Goyette  
Mr. Scott Grabarski  
Marlee Grace  
Sylvia Graske  
Mr. Richard Grayson  
Anne Greenbaum  
Stephen Greenbaum  
Robert J. Greenberg  
In memory of Kim L. Greenlee  
Harrison Gretter  
Elizabeth G. Griebel  
Elaine P. Griebenow  
Dr. Margaret M. Griffin  
Mike and Gina Grimes  
Donald B. Grissom  
Edmund A. and Arlene P.  
Grossman  
Thomas J. and Judith Fay Gruber  
Mr. Richard Grum  
Georgann Gulley  
H.L. Gunderson Jr.  
George and Virginia Gunnoe  
Nancy Gurski  
Glen and Mary Lou Guttormsen  
Jessica and David Gwin

### H

Clarence A. and Jeanette K.  
Haak  
Mr. and Mrs. Charles Hafer  
Mr. Richard M. Hall  
Liliana Hamilton  
Marie Hand  
Charles and Deborah Hanlon  
Mr. Leonard Hanna  
Donnie Ray Hannah  
Dick and Susan Hansen  
Mrs. Mary Estelle Hard  
Mr. Rhodrick Harden  
Mrs. Shirley Hart  
Mrs. Cornelia D. Hartough  
Gene and Donna Hartwig  
Bernard Harvieux  
David Hassler  
Lisa S. Hastings  
Mrs. E. Haugen

Ms. LouAnn Haughton  
Mrs. Gertrude Haugwitz  
Marilyn A. Hays  
Marjorie S. Heagy  
Steve and Leesa Heath  
Ms. Kathleen Heid  
Mrs. Elizabeth Heim  
Mr. and Mrs. John B. Heimkes  
Mr. and Mrs. Jack Heinzel  
In memory of my parents, Jack  
and Rosaline, and my  
brother Ronald; their loving  
daughter and sister, Tanya  
Hendler.

Richard D. Hendlin  
Del and Jane Henegar  
Chuck and Susan Henke  
Velma "Bonnie" Herdlick  
Ken & Irene Herman  
Kathryn A. Herpel  
Donald & Virginia Hersey  
K. William Hess  
Edward and Rosemarie Hever  
In memory of Ellsworth D. Hibler,  
David Ellsworth Hibler and  
William "Bill" Threadgill  
Mr. David Hicks  
Sherlee Hicks  
Mr. and Mrs. James R. Higgins  
Mrs. Leslie K. High  
Monica and Robert Hiiva  
Ms. Sandra O. Hijikata  
Armand C. Hilaire  
Dr. and Mrs. John Hildreth  
Edward J. and Anne H. Hill  
Brent Hill  
Cheryl A. Hintz  
Lois Hitchman  
Karl and Alicia Hixon  
Mr. and Mrs. Harold Hoaglin  
Mara Hodgkins  
Mr. Hodgman  
Mrs. Marilyn Hoene  
Mr. William F. Hoffmann  
Roy and Georgia Holiday  
In memory of Jacqueline Holley  
Jimmie Holliday  
Anita Curtin Holmes  
Dr. John and Judy Holmes  
Loretta Mae Holmes  
David and Stefany Holt  
Lynne and Allen T. Holzhauser  
Ruby K. Hooker  
Edna Hoover  
Glenn and Mary Ann Horn  
Marion A. Horn  
Ruby A. Hostler  
Vincent and Maria Howe  
Teresa Ann Howell  
Margaret Hudson  
Mr. Lane Hughes  
Ms. Mattie Hughes  
Margaret Anne Hukill  
Ms. Anna Hume  
Henry F. Humkey  
Susan M. Hunt in memory of  
Elizabeth Kott

Charles R. Huntington Jr.  
Bob and Eileen Hutton  
Richard C. Hyde  
Thomas and Winifred Hyde

### I

Ms. Marie Iandoli  
Hank and Paula Ihrig  
Edward W. Ilgenfritz  
James Ingram  
Bruce Inverso  
Mr. and Mrs. Jay Ison

### J

Richard O. Jacob  
John and Lorraine Jacobsen,  
in honor of beloved sister,  
Barbara Ann Ostrander  
Lars Jacobsen  
Barbara H. James  
Martha Jarrard  
Matthew and Kristin Jeffery  
Elizabeth H. Jenney  
In memory of Morris Jennings  
NL Jensen  
Louise Jeung  
Winston Jewson  
Roger and Annette Joens  
Mr. and Mrs. Lonnie Johns  
Florence Johnson  
George "Henry" Johnson  
Ms. Lois F. Johnson  
Lynn Johnson  
Mrs. Robert B. Johnson  
Marcellos and Tawanda  
Johnson-Gray  
In memory of Willis D. Johnson  
Vernon Lee Johnson  
Mary Claxton Joiner  
Mrs. Craig Jolley  
Mrs. Frances Jones  
Lisa Marie Jones  
Melinda Jones  
Dave Jordan in memory of Harry  
Jordan  
Mr. Donald Joseph  
Brenda Joyner  
Patricia Juliano in memory of  
John Juliano  
Ms. Margaret Julin

### K

Lois and Bill Kagan  
Mr. and Mrs. Charles Kahn Jr.  
Joe Kailnas  
Margaret Kaltenmeier  
Lorraine Kantor  
Maxine Karstens  
Bernard Katchmann in memory  
of Millie  
Ralph and Jo Ann Kats  
Gloria Katzberg  
Peggy Kauffman  
Donna Kaup  
Bertram C. Kay  
Jeffrey L. Kaylor, CPA  
Mrs. Betty Kellar

In memory of my brother, Dr.  
Robert A. Keller  
Vicki Kelley  
Mr. Abbott Kemp  
Judy Kenney  
Edgar J. Kenton III, M.D., FAHA  
Mr. and Mrs. Mathias W. Kerger  
Norma and Reuben Kershaw  
Ms. Mildred Kilchenmann  
In memory of Walter L. Kindle by  
his wife Jean Kindle  
Richard and Karen Kinstler  
Mrs. Billie Kirk  
Bobby Ralph and Lizzie Mae Kirk  
Frances W. Kirkman  
Mrs. Dolores H. Klausner  
Mark and Becky Klemm  
Larry Kloeppel  
Mr. and Mrs. Byron Kloeppel  
Maryann and Kevin Klustner  
Anne S. Knapp  
Brenda Knight  
Mr. Royce Knight  
Mrs. Nancy W. Knowles-Kolden  
Mr. and Mrs. Knowlton  
Kermit and Thelma Koehler  
Rodney Koenig  
Elise D. Koepke  
Janet C. Kohler  
Mr. Nicholas Kolen  
Harold & Eleanor Kolpan  
Frank Kornek  
Debra and D.J. Korn  
In loving memory of my beloved  
son, Steven Lance  
Theo Kotjarapoglus  
Carla Kotulskie  
Steven F. Kovach/Eva Erky  
Kovach  
Kenneth and Marilyn Kraft  
Nancy A. Kramer  
Dr. and Mrs. Edwin G. Krebs  
Vivian E. Kreidler  
Muriel Krieger  
Margaret Kritcher  
Mr. and Mrs. Robert Kroner  
Mr. and Mrs. James Kucaba  
Mr. Leo V. Kurzyna  
Jerry and Sandy Kuskin  
Alfred and Patricia Kwiecinski

### L

DeLoris LaDell  
Mr. Christopher Lamberes  
In loving memory of my beloved  
son, Steven Lance  
John and Gail Landry  
Thomas and Karen LaPolice  
Cummins  
Don and Tanya Larsen  
Mrs. Carol A. Larson  
Mr. Paul Lasseigne  
Rick A. Lavinsky  
Dr. Gerald Lawrie  
Mr. and Mrs. Bobby L. Layman  
Bunny LeBlanc  
Sally Rae Lehmkuhl

Alfred and Grace Leichman  
Amelia Lemmon  
Anna Lennox  
Carla A. Leonard  
Kevin and Pamela Leonard  
Mary Pat Leonard  
Walter Leonard  
John A. Leslie, in memory of  
Frieda M. and Sol H. Leslie  
Judith Wilkens Lev  
Anthony and Louise Levering  
Mrs. Isabel Levitt  
Dr. David Arthur Liggett  
Lillian Light  
Bruce Linden  
Barbara J. Lindheim  
Catherine H. Lindsey  
Mr. and Mrs. Robert Linsley  
Mr. and Mrs. Bert H. Livingston  
Mr. and Mrs. Laurence Lizotte  
Debra and Bill Lockwood  
Wanda J. Loftice  
Robert A. Loftus  
Mr. Lloyd Lohaus  
Mr. and Mrs. Anniello Lomoriello  
Michael W. Long, D.D.S., MAGD  
James Longino  
Ms. Michelle Loomis  
Ms. Laura Loughridge  
Lloyd and Susie Loven  
In honor of Peter Lucari Jr. and  
Lorraine V. Lucari  
Mr. Richard Luers  
Mr. John Lutz  
Ms. Beatrice Lypps

### M

Mr. and Mrs. George Mabe  
In loving memory of my husband,  
John H. Maguire Jr., by his  
beloved wife Sandy  
Mary Jane Mahler  
Mr. and Mrs. William Malfitano  
George Mamuzich  
Bobbie and Abe Mandel  
Nicholas Maneri  
Leo and Pat Manley  
Ms. Concha N. Marbut  
Mr. and Mrs. Walter Markotic  
Jerry and Shirley Marler  
Mrs. William R. Marston  
Ms. Carmen Martens  
Aldana Martin  
Mr. and Mrs. George Martin  
Mr. and Mrs. Mitchell Martin  
In memory of Mr. and Mrs.  
Antonio Martino  
Mr. Donald W. Marx  
In memory of Helen Masluch  
Charlotte Mastroianni  
Scott and Joy Mathis  
Blanca Mattalia-Wyrzykowski  
Erica Maxwell  
Lillian Doris McAuley  
Mrs. Margaret E. McConnell  
Ms. Marilyn McCracken  
Dolly McCranie

Gordon and Linda McCullough  
Ms. Shannon McDaniel  
Margaret McDevitt  
Eleanor McGrew  
William and Helen McKay  
Mr. David Charles McKechnie  
Mr. and Mrs. James P. McKeever  
Kathleen McKenzie  
Karen McKibbin  
Ann Louise McLean  
David McLellan  
Miss Robyn McLeod  
Frank and Trinkie McMahon  
Dr. and Mrs. John C. McMahon  
Gertrude McMarion  
Terri McMinn  
Larry Meade and Family  
Mark and Terry Meade  
Edward M. Meeks  
Mr. Don Meiers  
Dorothy Meili  
Douglas and Shirley Meindel  
John and Carolyn Meiners  
Mr. Robert Melcer  
David Mendelsohn Jr., M.D.,  
Trust and Carole L.  
Mendelsohn  
In loving memory of Carola P.  
Mendenhall, her son Robert.  
Karen Mendez  
Ann Merchant  
Joanne Mercurio  
Greg and Lynn Merz  
Mr. and Mrs. Joe Messina  
Mr. Michael C. Michalski  
In honor of Stephen J. Milioti and  
Stephen Milioti  
Mrs. Dwight Miller  
Frances F. Miller  
Mr. and Mrs. Frank Miller  
Heidi Ann Miller  
Mr. and Mrs. James Chris Miller  
John E. and Phyllis S. Milliken  
Mrs. Nancy Milteer  
Lorane H. Minis  
Linda and Allen Minsky  
The Dennis Mitchell Family  
Debra Mitchell-Morris  
Wendell and Virginia Moats  
Mr. and Mrs. Irving Moffenson  
Sara Mofield  
Mr. and Mrs. Walter Monk  
Ms. Pat Monstie  
Rudy Montemayor  
Flo Moore  
Mr. Frank L. Moore  
Bonnie Moreno  
Norton Morgenthal  
Ms. Mary Ann Mori  
Ms. Verneette Morrice  
George and Theresa Morris  
The Morris Family  
Donald A. Morrison  
Eleanor J. Morrissey  
Dr. and Mrs. David W. Morse  
Carol Morthland  
Bob and Bernice Morton

## PAUL DUDLEY WHITE LEGACY SOCIETY

Rose Marie S. Morton  
Drs. Nelson and Ann M. Mostow  
Perry Moyle  
Celeste Mruk-Tremoglie  
Jeff and Jen Mueller  
Frances Mungin-Simmons  
Albert G. Munkelt  
Mr. and Mrs. Charles Munoz  
Mr. Bob Munson  
Mrs. Sandra Munson  
Frederick P. Murdock  
Ms. Annie Murphy  
Janice Murphy in memory of  
Richard Murphy  
Ms. Jeannette Murphy  
Mrs. Martha Muska  
Theresa Muzio  
Robin B. Myers

### N

Marilyn G. Naper  
Jean Nappi  
Mr. Robert Neely  
Mr. Donald Nelson  
Mr. and Mrs. Howard P. Nelson  
Mr. David A. Ness  
Susette I. Nesset  
Steven G. Neu  
Mr. and Mrs. Kimrey D. Newlin  
In honor of Evelyn Poston,  
William Pratt and John  
Newsom  
In honor of my father, Samuel T.  
Nicastro Jr, Arleen Nicastro  
Mrs. Dorothy C. Nickel  
Mr. LeRoy Nisiewicz  
Adoracion Nitro-Taylor  
Janice and Jane Nolen  
Steven Bradley and Betty Nordin  
Dorothy Nordlund  
Shawn and Kaeleigh Norvet  
Neil Novins

### O

Frances P. O'Connell  
Helene and Bob O'Connell  
Tracey O'Donnell in memory of  
Kathleen Smyth  
Florence Olsen  
Joan M. Olsen  
Suzy R. O'Malley  
Francis and Jacqueline  
Oppedisano  
Charlotte S. Orient  
Mr. Pat B. O'Rourke  
Miss Lynn Orschel  
Janet and Robert Osborn  
Mrs. Doris Osten  
Mrs. Harriette Otteson  
Don Ouellette

### P

Paulette Pace  
Claudio and Ruth Padres  
Karen Palmer  
Mrs. Zelda Parker  
In memory of Helen Hoff,  
Samuel Parkinson, Dorothy  
Chapman & Margaret O'Neil

Tonda and Joe Parks  
Mr. and Mrs. Clarence Pate  
Mr. and Mrs. Will Patterson  
Pamela M. Payne  
Ms. Margaret Peabody  
Robert L. Pearce  
Sidney Pell, Ph.D.  
Charlotte Irene Pengilly  
Donna Penn  
Mr. and Mrs. Larry Percy  
Barbara Perry  
Ms. Barbara Perry  
Christina J. Persson  
Phil Petersen, in memory of my  
mother, Mildred A. Petersen

Alyce Peterson, CFP  
Mrs. Bonnie Peterson  
Diane Peterson  
Phyllis Peterson  
In memory of James Petrella  
Deborah Phelan  
Dr. Gregory J. Phillips  
Gus and Dora Phillips  
Barbara and Lyman Phillips  
Dr. Sol Pickard  
The Pickett Family  
Paula and Michael Pindro  
Judith Piovachy  
Mr. Harold H. Plaut  
Al and Dianne Poggi  
Mr. and Mrs. Harry Pollak  
Scott and Cathy Porter  
Mrs. Leslie Porter  
Dale and Arlene Post  
David W. Potts and The  
Honorable Wendy L. Potts  
Phillip and Dee-Ann Prather  
Mr. Charles L. Pressgrove  
Oliver C. Presswood Jr.  
Dr. Allan Price to honor Dr.  
Willerson  
Shirley R. Price  
Michael Priganc  
K. Diane Proud  
Mrs. Loretta Pruce  
Mr. and Mrs. George Pust

### R

Mrs. Corrine Radcliffe  
Mr. Craig Radcliffe  
Ginny Ragatz  
Tanya P. Raggio, M.D.  
Lloyd Davis Raines  
Mrs. Evelyn Randall  
Aleen Rankin  
Bill and Bette Raus  
In loving memory of Joseph  
Edward Rawls Sr. and Doris  
Rawls  
Mrs. Helen Reed  
Phillip and Dee-Ann Reed  
Wannetta Reed, in loving  
memory of my husband, Roy  
Mrs. Toni Reel  
Mr. Arthur Regan  
Karl R. Reichstadter  
Diane Reiss  
Stan and Kathy Renbarger  
Mr. and Mrs. Floyd Renshaw

Earl and Bettie Reque  
Richard Reuss  
In loving memory of Pamela  
Ethne Richards, her  
daughter Nadine  
Robert L. Pearce  
Michael C. Riddle  
Kelly M. Ridout  
Frederick K. Ritter  
Mr. Thomas Ritter  
John G. Ritz  
Mr. and Mrs. William H. Roach  
Dr. and Mrs. Frederick Roberts  
Ms. Virginia Roberts  
Rory and Mary Robichaux  
Paul Robins  
Ed Rodbro  
Bill and Rosemary Rogers  
Nancy C. and Richard R. Rogers  
Mrs. Carole Rohrberger  
Ana L. Roman  
Holly Romano  
Mr. Doug Rooker  
Tina Rosario and Family  
Phyllis Rose  
Warren and Cathy Rothwell  
Howard E. Rowen, M.D.  
Daniel C. Ruacho  
Israel and Zena Rubin  
Mr. Joel Ruby  
Erna M. Rueggeberg  
Wanda Rusche  
Harold L. Ruslander  
Joyce Russo  
Kenneth Rutt  
Christy Ryan  
C. Paul Ryan  
Kelly Rykard

### S

Angie Sakalay  
Mr. and Mrs. Leonard Saland  
Mr. John Samuelson  
Charles W. Sand, M.D.  
Nancy Sander  
Michael and Jennifer Sanfilippo  
James Sanquedolce  
In loving memory of Carey D.  
Sapp, his wife Dorothy J.  
Sapp and family  
Bonnie Mae Sartin  
Dr. Roy F. Sartori  
Mr. Gary R. Saslaw  
Lance and Robin Sauerteig  
Barbara J. Saunders  
Mark and Judy Savitt  
Janet R. Sawyer, R.N., Ph.D.  
In loving memory of Byron W.  
Mariner Sr., and Byron W.  
Mariner Jr., their daughter  
and sister, Sharon T. Scates  
Bernice L. Schaefer, in memory  
of family members  
Mabel M. Schaefer  
Dr. and Mrs. John Schaeffer  
Cheryl L. Scheck  
Jack and Vickie Schega  
Martha and Clyde Schell  
Helmtrud Scherer

Elizabeth S. Scheuerman  
Jay Schleuning  
David and Genell Schlotterbeck  
Janet G. Schmidt  
Paul F. Schneider  
Mr. Robert J. Schon  
Shirley Schon  
H.M. Schottlaender  
Mrs. Leo F. Schroedel  
Mr. Robert W. Schultz  
Arnold Schuppert  
Mr. William Schwarz  
Richard and Marilyn Schweitzer  
Leanne and Jay Schwind  
Dr. and Mrs. Barry Scott  
Jennifer Scott  
Robert and Regina Scullen  
Mr. and Mrs. William Sears  
Mr. and Mrs. Rudy Seidenglanz  
Karen Serrano  
Carole Setlak  
Ms. A. Margaret "Meg" Seymour  
Donna Shaheen  
In loving memory of JoAnn  
Sharpe, her husband Elton  
Sharpe

In memory of Thomas J. Carter,  
his loving daughter Tommie  
C. Shaugnessy  
Craig Schaum  
I. Norman Sheldon  
Mr. and Mrs. Ronald  
Shellenberger  
Ms. Tere Shelton  
Gina Shiffert  
Doris C. Sholk  
Dean and Marge Shupert  
Irene Sidun  
Mrs. Joan Siegel  
Dr. Stephen Sigal  
Clinton and Claudia Silverman  
The Honorable Sir Barry Simons  
In memory of Gertrude Caylor  
Moorhead, by her daughter,  
Carol M. Simpson  
Mr. and Mrs. Harold Simpson  
Mary Ann Slavin Sinar  
Mr. and Mrs. David Singleton  
Dr. and Mrs. Peter Skadron  
Mr. and Mrs. Ernest Skuta  
In loving memory of Rebecca and  
Charles Tenenbaum, their  
daughter Gertrude Siifkin

### T

Marilyn Slye  
Dr. Richard Smalling  
Anne D. Smith  
Annette Smith  
Cindy M. Smith  
Mr. and Mrs. Ernest B. Smith  
Ms. Helen Smith  
Mr. Herbert W. Smith  
Phyllis Smith  
Robert E. Smith  
Harold and Ruth Smulyan  
Mrs. Barbara Snelling in memory  
of Mr. Richard K. Snelling Sr.  
Eric Snow  
Tonya R. Snowden  
Harold and Joan Snyder  
Ms. Phyllis Solof  
Kimberly Soltis  
Mrs. Margot I. Sparling  
Bill and Renee Speeburgh in  
memory of Johnnie Marie  
Smith  
Mrs. Florence Speer  
Crystal and Brian Spencer  
Dr. Ronald Spiegel  
Mrs. Ramona Spindler  
Mr. Doyle Spivey in memory of  
my wife, Bennie Jo Spivey,  
and my mother, Alma Cotton  
Spivey  
Alice Spriska  
Bill Staneruck  
Louis F. and Sharon M. Stanzione  
Joe and Shirley Starr  
Mr. Peter F. Staudohar  
Stuart and Caroline Steele  
Ms. Edith Stein  
Mr. John Steiner  
Ray Steiner  
Doug and Sara Steingraber  
Mrs. Mary Suzanne Stickle  
Ms. Karen Stierer  
Mrs. Phyllis S. Stines  
Cindy Stirling  
Rosaland Brooks  
Ben F. Storer, M.D.  
Elroy H. Storm  
Mrs. Yvonne Stovall  
Thomas Straczynski  
Lanie Strassburger  
Craig and Harriet Strickland  
Mr. Dennis Strickland  
David and Virginia Summer  
Katherine Suplee  
Mr. Albert Suter  
Mr. Benson Sutton  
Mrs. Dorothy and Mr. Berry  
Sweeting  
Thomas and Gwendolyn Swisher  
Mrs. Ella Switzer

Mr. Andreas Traks and Dr.  
Elmerice Traks  
Mr. and Mrs. J.N. Trapp  
Dr. and Mrs. Sam Traugher  
Mr. Thomas M. Trecker  
Ms. Mary Tromblay  
Chuck and Angie Troutman  
Mr. and Mrs. Martin Tucker  
Lacy and Faye Tully  
Doris J. Turney  
Miss Judy Tummitt  
Harriet Tyler

### U

Mr. and Mrs. Ernest Uberr  
Cathy Udall in memory of Dr.  
John A. Udall  
Mrs. Morton Ulman  
Elsie E. Upson  
Suzie Upton  
Ms. Mary Utich

### V

Adriana Van Heyningen  
Johnny and Peggy Vardeman  
Mr. Tim Vaske  
Charles A. Vergers, in loving  
memory of Abraham and  
Hazel Vergers and Charles  
and Bess Mullenix  
Mrs. Elinor Virgona  
Ms. Jodie Vokes  
William G. and Emmy Lou  
Volenick  
Dr. Victor and Isabelle Vollrath

### W

James and Penny Waechter  
Bruce S. Wagner  
Curt Wagner  
Fritz Waidner  
Dr. and Mrs. Thad Waites  
Michael David Walden  
Mrs. Clare R. Walker  
Dave and Jacquelyn Walker  
Debbie Walker  
Dot Walker  
Ms. Mary L. Wallace  
In memory of my parents, John  
and Charlie Leah McClurg,  
Peggy Walters  
Mr. and Mrs. Louis B. Walther  
Caroline Walzel  
Brett and Jennifer Wardrop  
Denise Warfield  
Charles E. Warren  
George and Jackie Waterhouse  
Siv A. Watson  
Mr. and Mrs. Michael L. Weamer  
Ms. Nanci Wechsler  
James and Virginia Wei  
Angie Weichmann  
Robert and Stephen Weiner  
Paul Weisbord  
Myron L. Weisfeldt, M.D.  
Page and Judy Welch  
Hubert Wen  
Albert and Alice Wesley  
Michelle West

Rebecca West  
Meg Westerlund and Boys  
John H. Wheeler  
Cass Wheeler  
Mrs. Beth White-Miller  
Charmaine White  
Janet White  
Mary F. White  
Joseph and Jeanne Wieder  
Ms. Nancy Wiegman  
Mrs. Ellen Wilcox  
Janet E. Wilkins  
Esther Willis  
JoAnn Wills  
Billy and Lisa Wilson in memory  
of Hartley Wilson  
Bobby and Shirley Wilson  
Luree D. Wilson  
Richard M. Wilson  
Veda Wilson  
Mr. and Mrs. E. Carlton Wilton Jr.  
Mr. Nolan O. Winsett Jr.  
Gregory J. Winslow  
Mr. and Mrs. Doug Winter  
Mr. Charley H. Wise  
John and Margaret Wise  
Frank E. and Madeline Witt  
Marlys Wohlers  
Mrs. Ann Wolf  
Davina H. Wong  
Robert and Judith Wood  
Catherine H. Woodhurst  
Mr. and Mrs. J. H. Woodward  
Clyde E. and Marguerite M.  
Wooley  
Robert Wunderlich  
Mary Lou and Richard Wysocki

### Y

Dr. and Mrs. Charles Yanofsky  
Vera Yoder  
In loving memory of Bernard  
Everett by Diane Young  
Mr. Steve Youngerman  
A. Tobey and Natalie Yu  
Mrs. Sharon A. Yurvati

### Z

Ms. Betty Zaher  
George Zaine  
In memory of Jeanne Zborowski  
John and Jean Zehnder, in  
memory of David Hunt and  
W. in memory of David Hunt  
and W.F. Bott  
Marian E. Zehnder  
Mrs. John T. Zeien  
Catherine Zofchak  
Alice Jean Zuccaire  
Rhoda Joyce Zuccaire  
Fred and Roxie Zullinger

*We also want to recognize  
countless other donors who  
wish to remain anonymous.*





**AMERICAN HEART ASSOCIATION**

1-800-AHA-USA1 [heart.org](http://heart.org)

**AMERICAN STROKE ASSOCIATION**

A division of the American Heart Association  
1-888-4-STROKE (1-888-478-7653). For more  
information on life after stroke, ask for the stroke  
family "Warmline." [StrokeAssociation.org](http://StrokeAssociation.org)

**NATIONAL CENTER**

7272 Greenville Avenue • Dallas, TX • 75231-4596

The American Heart Association is an Equal Opportunity Employer.



Scan this code with your  
smartphone to learn more.



*The paper used for this product comes  
from certified forests that are managed in  
a sustainable way to meet environmental  
needs of present and future generations.  
Printed on 10% PC fiber.*